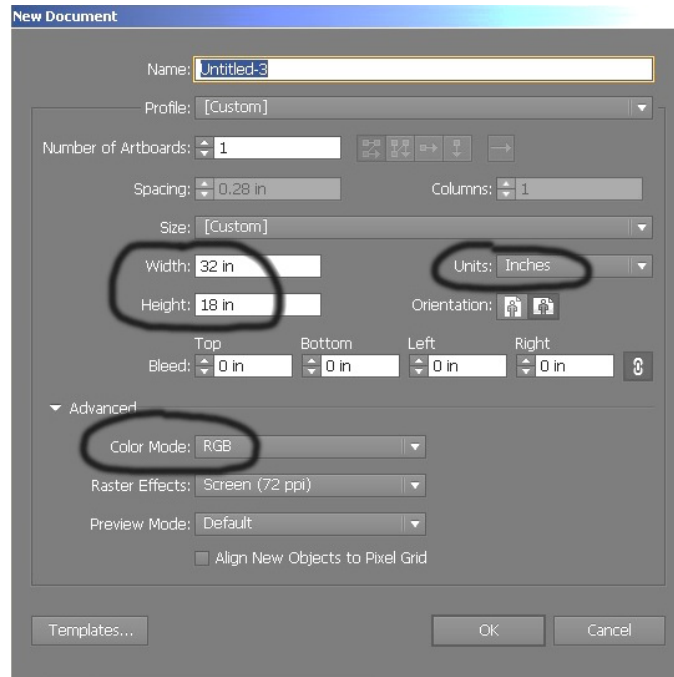
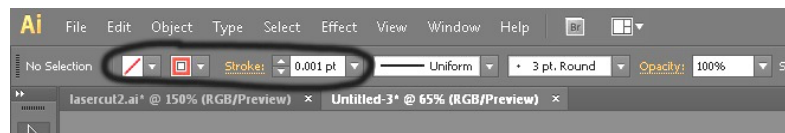


# Using the Laser Cutter from Adobe Illustrator CC

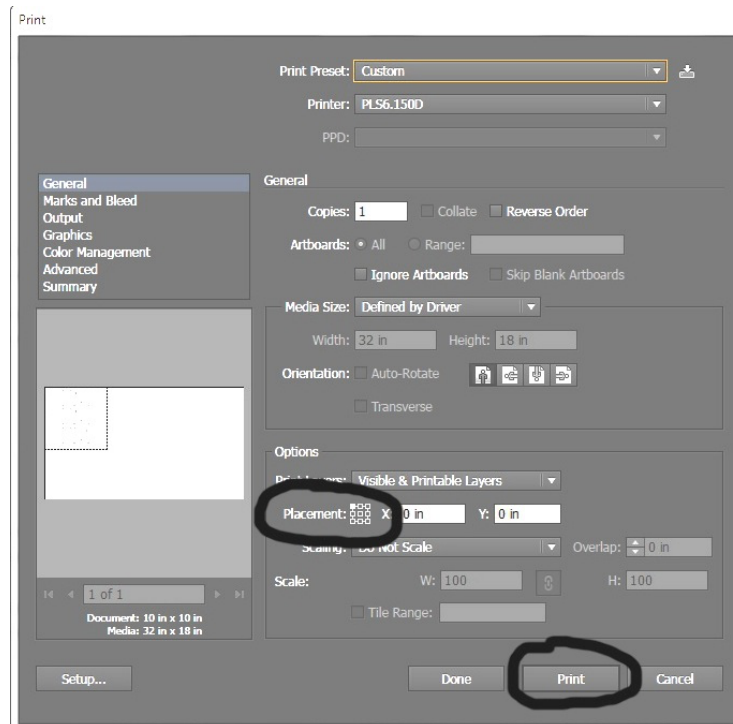
1. Set up your Illustrator document to be in inches and in RGB mode. The maximum size of the art board should be 32 inches wide by 18 inches high.



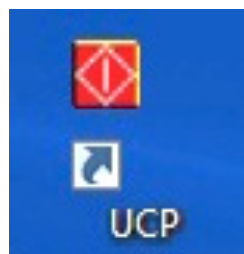
2. Vector lines should be set with no fill; stroke should be set to .001.
  - RGB Red lines (R=255, G=0, B=0) cut completely through material.
  - RGB Blue lines (R=0, G=0, B=255) will engrave the surface.
  - To create fill or to increase the width of a line, the fill and/or stroke should be set to RGB Black (R=0, G=0, B=0). Stroke can be thicker than .001 when using black. This setting will take considerably longer and will raster engrave the material.
  - The laser cutter can raster engrave placed photos as well.



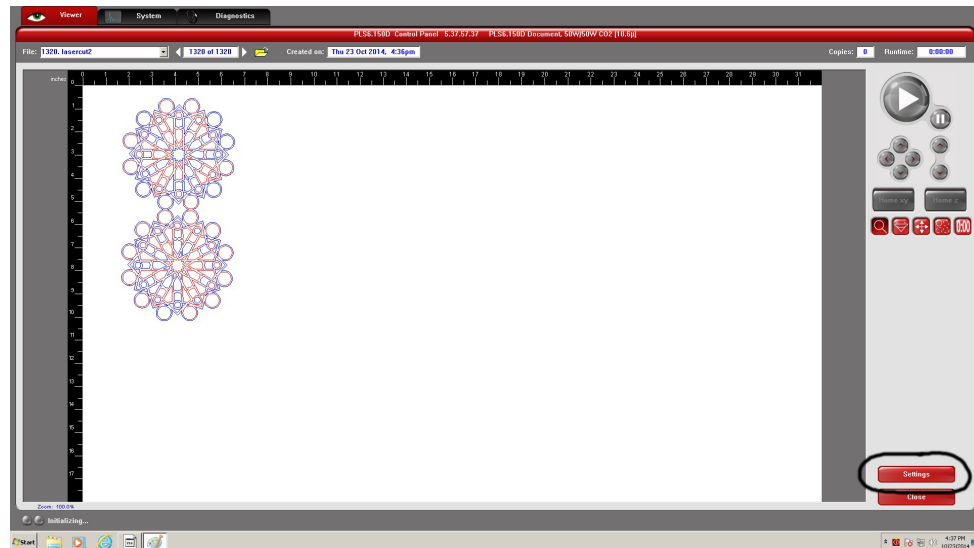
- When your file is finished, click Print from the File menu. When the print window opens, make sure that your artwork is in the upper left hand corner by using the placement options. Then click Print.



- Open the Universal Laser Systems Control Panel. The shortcut has a red square icon and is on the desktop labeled UCP.



5. Preview your design and make sure your colors are correct. Click on the Settings tab.



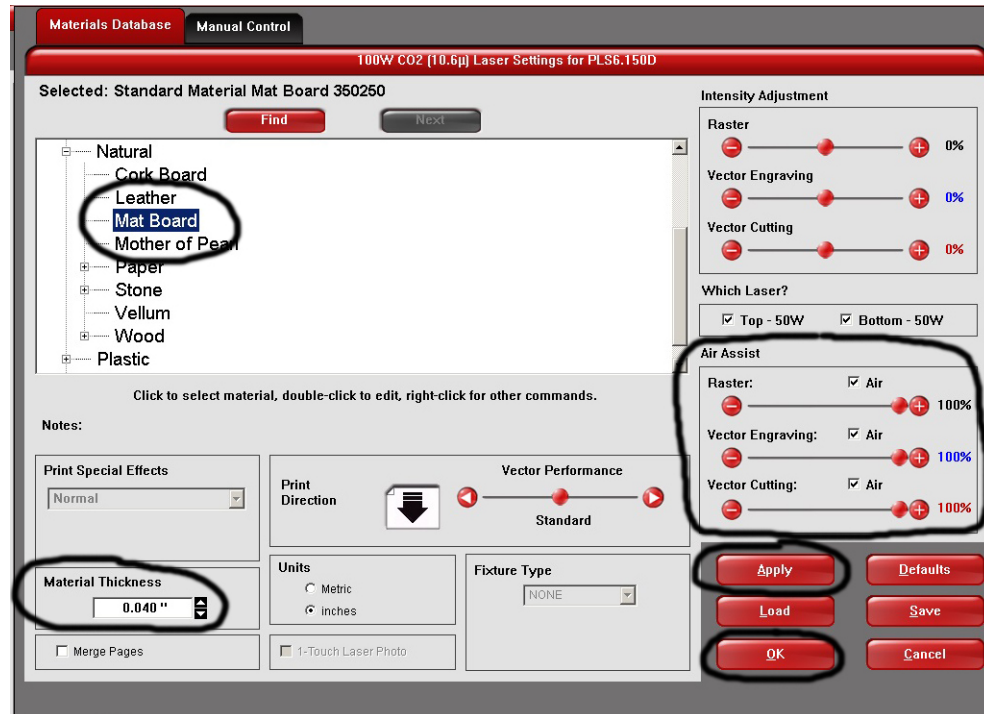
6. The laser cutters are slightly different when it comes to the settings. Laser cutter #1 is by the windows, Laser Cutter #2 is against the wall. Please follow the directions for the laser cutter that you are using.

### **Laser Cutter #1**

When the window opens, click on the Materials Database tab and choose your material. Next, use the supplied digital calipers (usually on the desk) to accurately measure your material and enter the material thickness. Last, ensure that Super Speed is checked on. Click Apply and then OK.

### **Laser Cutter #2**

When the window opens, click on the Materials Database tab and choose your material. Next, use the supplied digital calipers (usually on the desk) to accurately measure your material and enter the material thickness. Last, ensure that air assist is on Air and at 100% for all engraving and cutting (If you do not have air assist on, you will likely ruin the lens. A replacement lens will cost you around \$200). Click Apply and then OK.



7. Load your material in the upper left corner of the laser cutter. Make sure that the ventilation and the air pump switches on the wall are turned on and then click the green (play) button. If you need to pause your cut, push the red (pause) button. Make sure to push the red (pause) button when you are ready to continue, if you click the green (play) button the paused file will start from the beginning.

### The Laser cutter can cut the following materials:

- Chipboard
- Museum board
- Masonite
- Corrugated Cardboard
- Wood up to ½ inch thick
- Plexiglas, Lucite, Acrylic up to ¼ inch thick
- Polyethylene Terephthalate (PETG)
- Polyethylene (PE)
- Vellum
- Acetate
- Fabrics
- Leather

\*Procedures and/or material policies may change at any time.