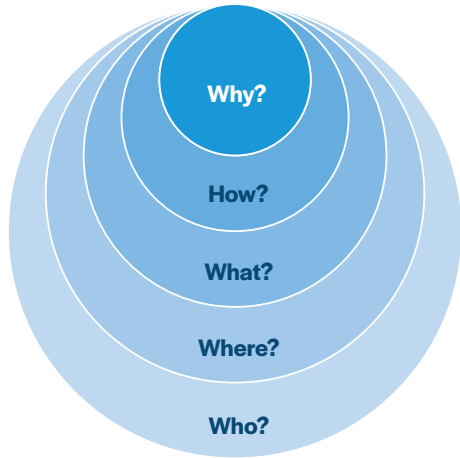




The Why, How, What, Where and Who of IECMHC



Why?

- 1 Promote healthy social and emotional skills in children
- 2 Reduce suspension and expulsions
- 3 Support early childhood educators and reduce turnover

How? IECMH consultants work with the providers/caregivers in young children's lives to build the providers'/ caregivers' skills to support healthy social and emotional development — early and before formalized intervention is needed.

What? IECMHC is a prevention-based approach.

Where? Early childhood education, home visiting, ECI, and primary care.

Who? Licensed Mental Health Providers.



Texas Infant & Early Childhood
Mental Health Consultation

Infant & Early Childhood Mental Health Consultation in Texas



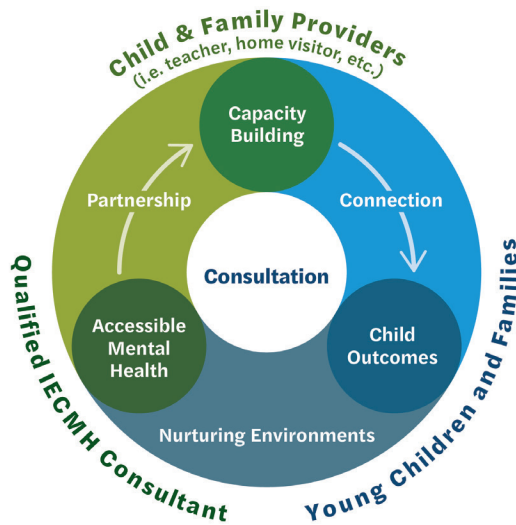
Texas Infant & Early Childhood
Mental Health Consultation

This project was made possible by the Preschool Development Grant Birth through Five, grant number 90TP0088. Its contents are solely the responsibility of the authors and do not necessarily represent the official view of the United States Department of Health and Human Services, Administration for Children and Families.



What is IECMHC?

IECMHC promotes the behavioral, social, and emotional well-being of young children through partnering with and supporting their primary caregivers and providers. IECMHC is built on the knowledge that the relationship between adult caregiver/provider and child is central in shaping the child's health and development.



Who provides IECMHC?

Licensed mental health providers with an advanced degree in counseling, psychology, social work (LCSW), or psychiatry.

What is the impact?

IECMHC has been shown to improve children's social skills and emotional functioning; promote healthy relationships; reduce challenging behaviors; reduce the number of suspensions and expulsions; improve classroom quality; and reduce provider stress, burnout, and turnover. Outcomes associated with IECMHC include¹:

- » Improved child care center quality;
- » Improved child social-emotional competency;
- » Improved parent-child interactions;
- » Reduction in expulsion and/or suspension risk or rates;
- » Improved school readiness;
- » Reduction in staff turnover;
- » Improved classroom climate;
- » Improved adult knowledge about social-emotional development;
- » Reduction in provider and caregiver stress;
- » Improved adult-child/caregiver-child dyadic relationship; and
- » High provider satisfaction with services.

¹ Center of Excellence for Infant and Early Childhood Mental Health Consultation. (2023, September 13). Searchable Evidence Database for IECMHC. Retrieved from Center of Excellence for Infant and Early Childhood Mental Health Consultation: <https://www.iecmhc.org/evidence-mapping/>

Core Values:

Equity and diversity are central to IECMHC.

- » The mental health of young children is intertwined with the well-being of their caregivers.
- » IECMHC services must be based on the best available research.
- » IECMHC helps to bridge the gaps in Early Childhood Systems of Care.
- » Mental Health consultants require support for skill and knowledge building.
- » Family voice an essential component for providing impactful, equitable services.

