

Improving HSE at Remote Rig Sites by Adoption of Telecommunications Advances

Aboyi Olokpo

Austin - February 2015



Outline

- What is the most important consideration of health, safety, and environment?
- What are the hazards?
- Who is exposed and how often?
- Getting people out of harms way
- Taking advantage of telecommunications
- What other benefits will arise?

Loss Prevention at Rig Sites

- Rig sites are typically fraught with hazards
- Remote rig-sites lack access to remedial services
- Several schemes exist to prevent accidents at rig-sites
- Loss prevention focuses on:
 - Preservation of life and limb of the workforce
 - Protection of the environment
 - Maximizing return on capital employed

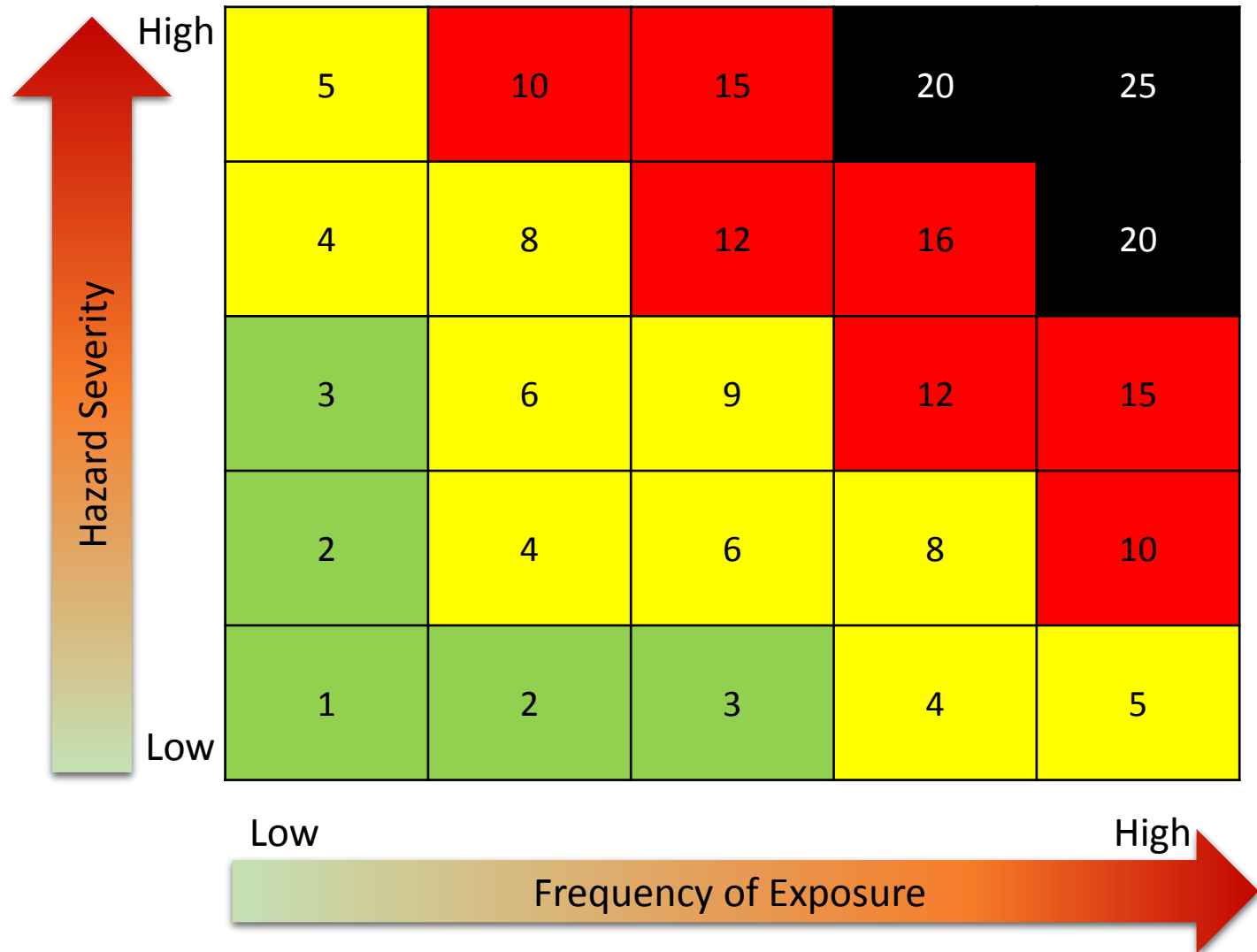


What are the Typical Hazards?

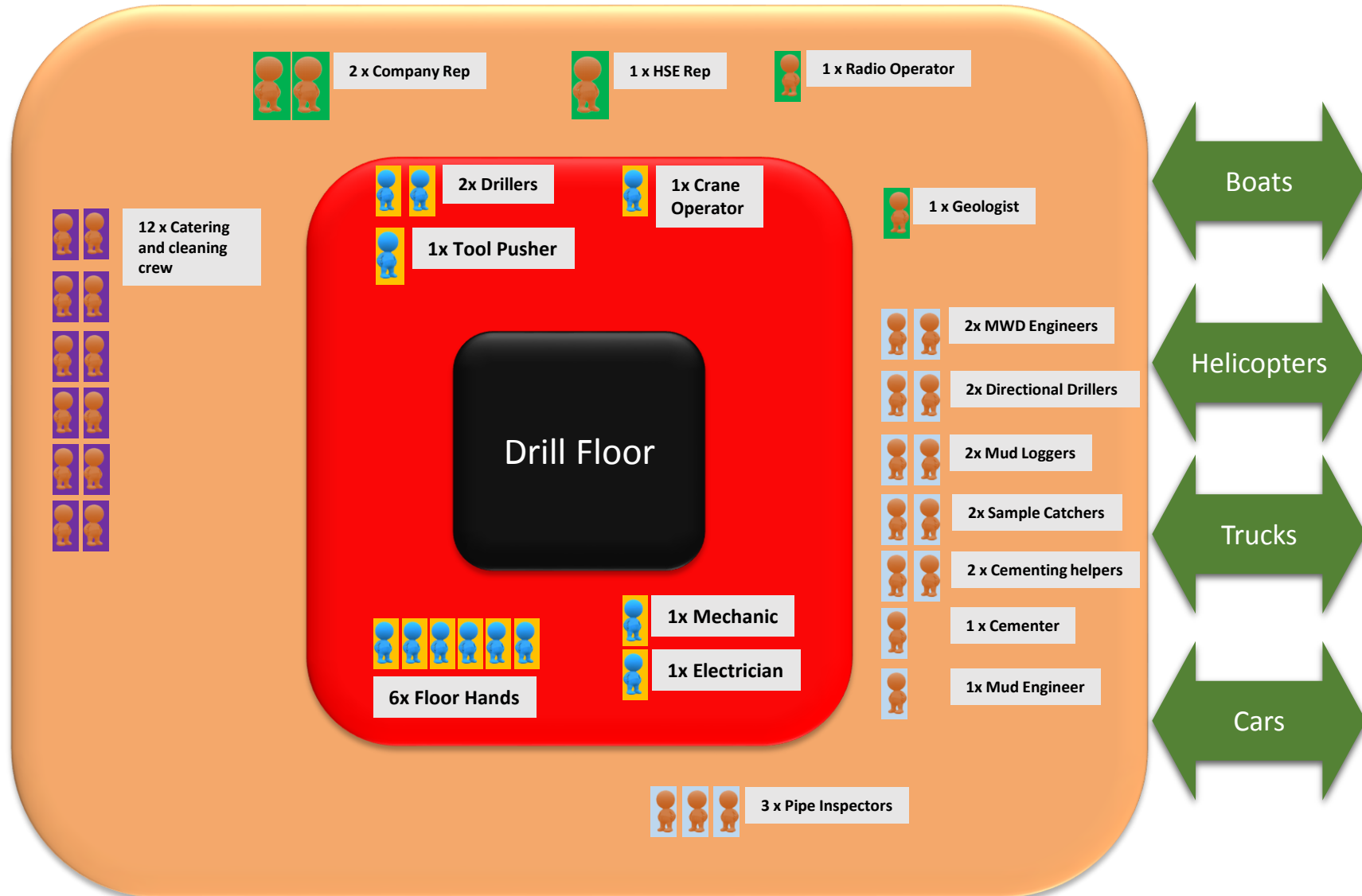
- Trips and falls
- Struck by..
- Caught between..
- Smoke inhalation
- Poisonous gases
- Fire
- Explosions
- Road accidents
- Chemicals
- Loud sounds
- Heat
- Cold
- Drowning
- Pressure release
- High winds
- Psychological/isolation
- Flight accidents
- Rough seas
- Dropped objects
- Etc..



The Risk Matrix



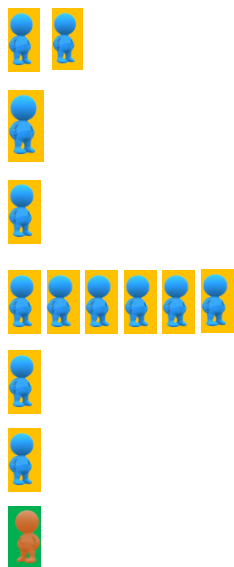
Who Is Exposed and How Often?



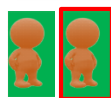
Getting People Out of Harms Way

Current RigSite population

Core Drill Team



Client Team



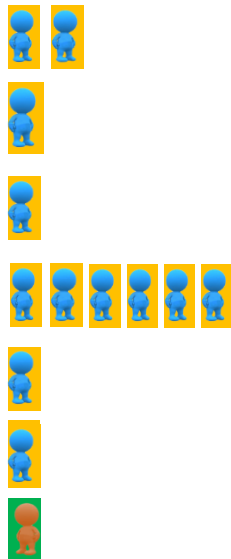
Specialist Services



33 persons

Future RigSite population

Core Drill Team



Client Team



Specialist Services



1x MWD Engineers



2x Sample Catchers



2x Cementing Helpers



1x Cementer



2x Pipe Inspectors

23 Persons

33% reduction in frequency of Exposure

Off-Site population

Client Team



1x Geologist

Specialist Services



1x MWD Engineers



2x Directional Drillers



2x Data Loggers



1x Mud Engineer

A Vision for the Future

