

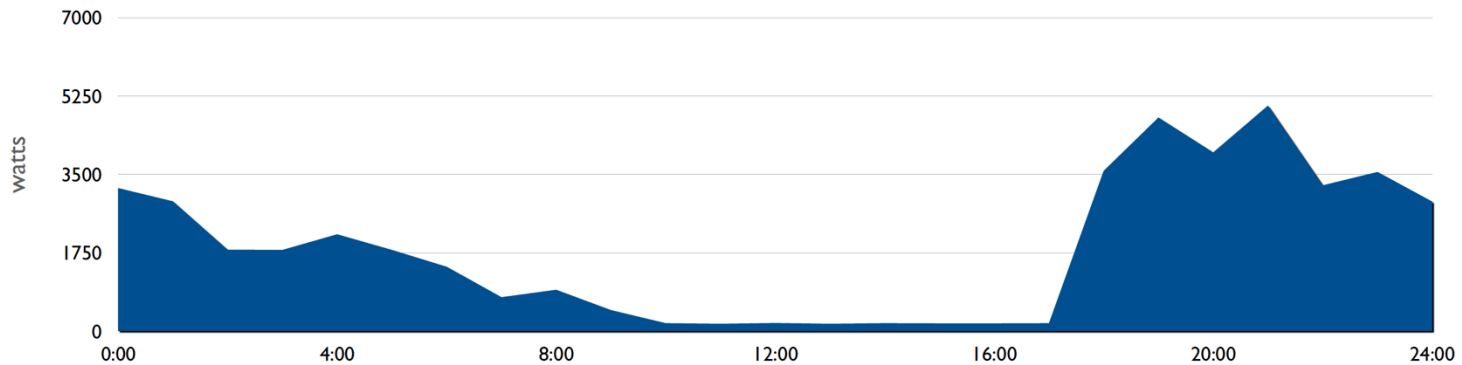
Energy Week

Scott Hinson,
Pecan Street Inc.

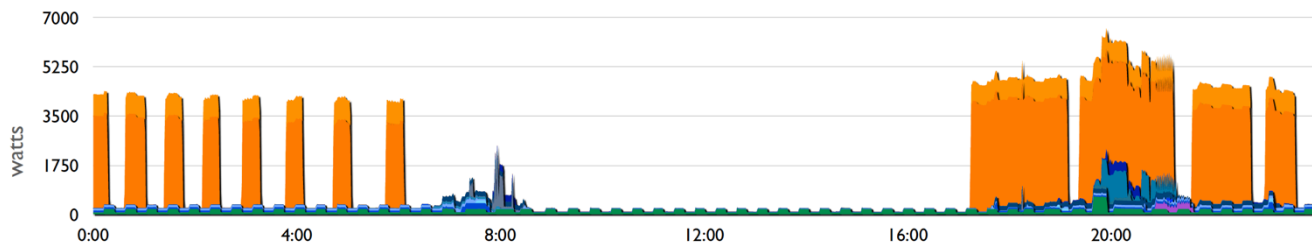


- Facts
 - Worlds largest research energy use database (Adding Water)
 - 2,000+ devices being monitored
 - Energy monitors, electric/water/gas smart meters, smart thermostats, residential gateways
 - 1,300+ residential participants in TX, CA, & CO
 - 300 in Mueller neighborhood
 - 210 with rooftop PV averaging 5.5kW
 - 73 with Plug-in EV
 - 3 transformers monitored
 - High-resolution water monitoring across Texas
 - >130 Million data points daily....

July 31, 2012 Daily electric use: 1-hour interval smart meter

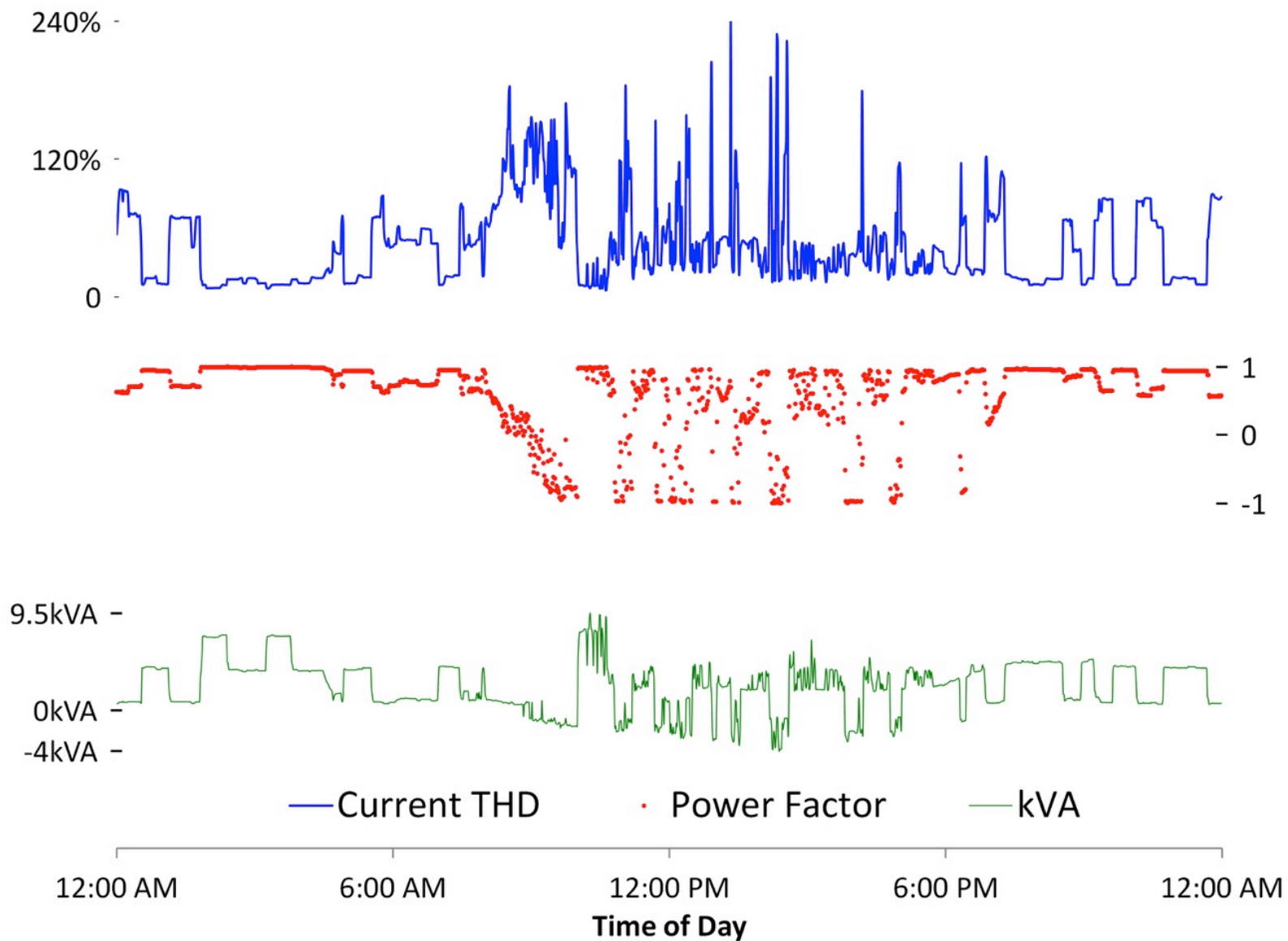


Same Day Pecan Street Inc. Data: 1-minute interval



- | | | | |
|------------------|--|----------------------------|-----------------|
| Other | Living Room Always On | Refrigerator (KSAC 1) | Dryer |
| Master bedroom | Bathroom 1 | Bedroom 2 | Bathroom 2 |
| General Lights 1 | Microwave, toaster oven, coffee machine (KSAC 2) | Kitchen lights (Kitchen 1) | Washer |
| Dishwasher | Living Room | Garage | HVAC compressor |
| HVAC air handler | | | |

Power Quality Measurements of a Single Home



Thank You

Scott Hinson
Director of Engineering
Pecan Street Inc.
shinson@pecanstreet.org

