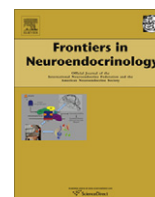




Contents lists available at ScienceDirect

Frontiers in Neuroendocrinology

journal homepage: www.elsevier.com/locate/yfrne

Review

Genes, hormones, and circuits: An integrative approach to study the evolution of social behavior

Lauren A. O'Connell, Hans A. Hofmann*

Institute for Cellular and Molecular Biology, Section of Integrative Biology, University of Texas at Austin, Austin, TX 78705, USA

ARTICLE INFO

Article history:

Available online 14 December 2010

Keywords:

Genomics
 Social behavior network
 Mesolimbic reward system
 Evolution
 Decision-making
 Approach
 Avoidance
 Challenge response
 Phenologs
 Developmental system drift

ABSTRACT

Tremendous progress has been made in our understanding of the ultimate and proximate mechanisms underlying social behavior, yet an integrative evolutionary analysis of its underpinnings has been difficult. In this review, we propose that modern genomic approaches can facilitate such studies by integrating four approaches to brain and behavior studies: (1) animals face many challenges and opportunities that are ecologically and socially equivalent across species; (2) they respond with species-specific, yet quantifiable and comparable approach and avoidance behaviors; (3) these behaviors in turn are regulated by gene modules and neurochemical codes; and (4) these behaviors are governed by brain circuits such as the mesolimbic reward system and the social behavior network. For each approach, we discuss genomic and other studies that have shed light on various aspects of social behavior and its underpinnings and suggest promising avenues for future research into the evolution of neuroethological systems.

© 2010 Elsevier Inc. All rights reserved.

1. Introduction

All animals continuously integrate their internal physiological state with environmental events and subsequently choose one action over another to increase their chances of survival and reproduction. These decisions are about obtaining and defending resources (such as food, shelter or mates) or evading danger (such as predator avoidance), and they often take place in a social context, such as dominance hierarchies, mate choice, and/or offspring care. Even though the survival value and evolution of behavioral decisions have been examined in great detail by behavioral ecologists [153], we are just now beginning to understand the neural and molecular mechanisms underlying these decision-making processes. As biologists have moved beyond the ultimately fruitless debates about the relative contributions of nature and nurture, we have come to understand that behavior – like all phenotypes – is the result of interactions between genetic, environmental, and developmental/epigenetic processes [8,50,120,247,292,314]. At the same time, comparative studies have illuminated the behavioral, neural, and molecular underpinnings of behavior, suggesting that – similar to developmental [38,283] and genetic systems [177] – at least some of the mechanisms regulating behavior across mul-

multiple levels of biological organization are conserved in a wide range of species [134,201,213,230,240,306].

How do animals decide which behavioral action to take when faced with a complex array of sensory stimuli and internal state conditions, and how did such a decision-making system evolve? In this review, we incorporate recent insights from a range of biological disciplines into a framework that promotes an integrative understanding of the evolution, survival value, causation, and development of behavioral decisions, as first proposed almost half a century ago by Niko Tinbergen [277], the Nobel-prize winning co-founder of the scientific study of behavior [31].

We outline four pillars to support this framework (Fig. 1) and discuss them in the light of functional genomics. First, given the astonishing diversity of behavioral displays we find in nature, we need to define behavioral contexts of relevance to the life history and ecology of any given species such that comparisons across taxa are as unbiased as possible (see [109,213], for detailed discussions of this difficult subject). All animals, at one time or another, face challenges (e.g., territorial intrusions; competition for shelter; predation) as well as opportunities (e.g., finding a mate; a chance to climb in the social hierarchy; obtaining food) that affect their chances of survival and reproduction in similar ways. We suggest that comparative studies into the mechanisms of social behavior should expose individuals of different species to equivalent social stimuli. Second, by carefully determining the relative amounts of approach and avoidance (or withdrawal; see Schneirla [243] for a classical appraisal of this concept) in any challenge/opportunity

* Corresponding author. Address: Section of Integrative Biology, The University of Texas at Austin, 1 University Station – C0930, Austin, TX 78712, USA. Fax: +1 512 471 3878.

E-mail address: hans@mail.utexas.edu (H.A. Hofmann).

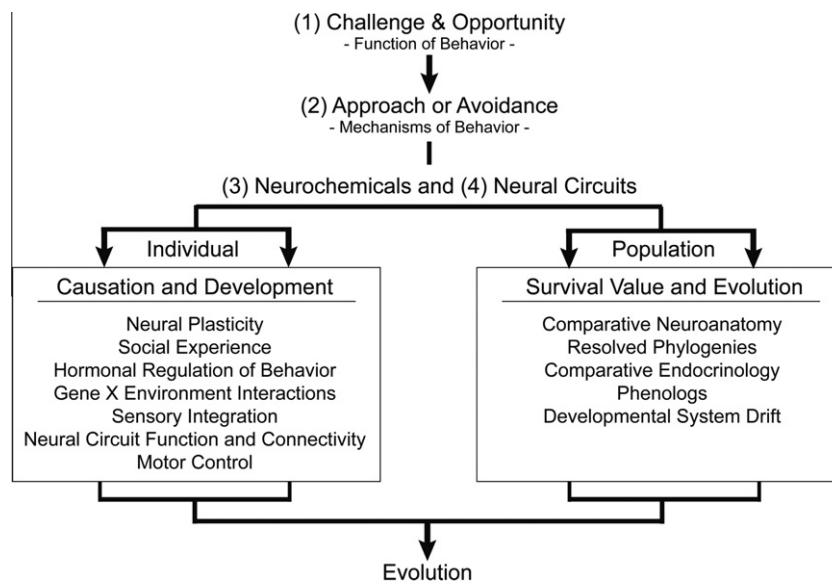


Fig. 1. An integrative framework for the analysis of social behavior and its evolution. Themes for studying both the proximate and ultimate mechanisms of social decision-making are presented on the level of the individual (left panel) and the population (right panel).

context, we can obtain quantitative behavioral and physiological measures as an entry point into the neural, endocrine, and molecular mechanisms of the behavioral response in question. Third, the remarkably conserved actions of hormones, specifically sex steroid and neuropeptide hormones, in the regulation of behavior have long been a focus of research [1,15,49,83,133,164,227,287]. Similarly, the role of catecholamines, dopamine in particular, in encoding the salience and rewarding properties of a (social) stimulus appears to be conserved across a wide range of animals [22,111,312]. In addition, it has become evident that the coordinated activity of sets of genes (modules) can be conserved across species [168,258] or within species life history stages [9]. Fourth, because the orchestration of these neuroendocrine and molecular processes follows complex spatial and temporal patterns throughout the brain [48,129,194,311], we require a detailed understanding of the neural circuits involved in this regulation, such as the social behavior network [48,94,194] and the mesolimbic reward system [58,296]. Of course, within a comparative framework a neural network approach can only be accomplished if the homology relationships for the relevant brain regions have been resolved across a wide range of taxa [197,199,269].

2. Universal properties of living systems

All living systems share the same macromolecules (nucleic acids, amino acids) for the storage, transfer, and utilization of information, which is considered strong evidence for a common origin of life on earth. Even more important to modern biology, it suggests that throughout evolutionary history a shared set of building blocks – “tool box” [40,218] – has been deployed and expanded upon as novel traits and lineages arose. Based on the whole genome sequences that have become available for diverse species, we now know that a remarkably large number of protein-coding genes are shared (have orthologs) across all animals (and, to a lesser extent, all organisms). Similarly, conserved non-coding regions dispersed throughout the genome appear to play important regulatory and developmental roles across a wide range of taxonomic groups [219,256].

The realization that protein-coding genes are so highly conserved across species raises a question that is fundamental to our understanding of genetic information: how can highly conserved

genetic codes generate the astounding array of body types and behavioral expression that mark the diversity of life? Advances in understanding the human genome have come from comparing variation in the sequences and in the expression patterns of genomes across species [39], a process that amounts to an experimental manipulation of genetic components, with nature providing the independent variables, and anatomy, physiology, and behavior being the dependent variables that allow us to understand the function of genetic sequences. Comparative genomics has given us the tools to dissect the human or any other genome with regards to transcription initiation sites, splice sites, number of protein-coding genes, as well as genes that do not follow canonical rules. Importantly, comparative genomics has been of tremendous utility for delineating promoter and other regulatory sequences, and the discovery of RNA genes and microRNAs [3,43,214]. Thus, genomics is most useful as a comparative science, and is instrumental for understanding the variation of brain and behavior across species and how this variation evolved.

Comparative research into the evolution of developmental processes (evo-devo) has taught us that regulatory pathways and developmental programs underlying morphological differentiation (e.g., those controlled by homeotic genes) are highly conserved across a wide range of taxa [38]. Small variations (e.g., via gene regulation in space and time, gene duplication/subfunctionalization) in these pathways can result in morphological novelties that may give rise to new lineages in the course of evolution. One example is the repeated convergent evolution of eyes as image-forming devices that likely evolved independently in numerous lineages [80]. However, the transcription factor PAX6 appears to be crucial in the developmental programs of eyes in a range of distant lineages [35], suggesting that this gene has been recruited into an eye developmental program on multiple independent occasions. As PAX6 is pleiotropic (i.e., plays a key role in several other developmental programs), it remained intact during long periods of “eyelessness”. Thus, as has previously been suggested, such “deep homologies” [121,229,254,271,297] might also underlie social behavior that – given the appropriate functional context and selection pressure – has evolved independently in multiple lineages [280]. Here, we provide an explicit framework to study the evolution of social behavior, spanning an arch from functionally equivalent social contexts via quantitative behavioral measures and molecular

mechanisms of neural circuit function, all the way to the conserved roles of neurochemical systems.

3. Challenge and opportunity

An important consideration in studying how behavioral decisions are made and evolve is how to compare such complex behavior patterns across diverse species. While it has long been recognized that a full understanding of biological processes requires the study of diverse model systems [156], behavioral displays are remarkably diverse across species. This often confounds the comparisons of neural and molecular mechanisms underlying a given behavior across species [109,213]. Therefore, we need a framework in which to study behavior that is placed in an evolutionary context and that can be applied across many taxa.

We propose a classification scheme based on two of Tinbergen's [279] "four questions" – survival value and evolution – by categorizing animal behavior according to the life history and/or ecological context in which it takes place. Specifically, social interactions related to reproduction, offspring care, or foraging take place in the context of *opportunity*, whereas the aggressive defense of a territory (or other valuable resource) or offspring can be considered behavior patterns that occur in response to a *challenge* (Fig. 2). Such a grouping of diverse behavior patterns allows us to reduce the taxonomic diversity to basic functional contexts and already hints at the intriguing possibility that the neural and molecular networks underlying challenge and opportunity behaviors evolved from genomic, endocrine and neural processes that may at least in part be conserved.

Behavioral responses to challenges have been documented in all the diverse taxa studied and include the defense of resources (e.g., shelter, food, mates) and predator avoidance [116,152,181,217,273,303]. In many species, resource defense typically involves aggressive displays. For example, male fruitflies, *Drosophila melanogaster*, will display aggressive behavior in defense of females or territories [68,117], and variation in this behavior across populations can be explained in part by genetic differences [118] and can be subject to artificial selection [63,112,119]. Edwards and colleagues [71] profiled whole body transcriptomes of high and low aggression strains of *Drosophila* males and females and found a profound transcriptional response involving ~10% of the genome between the two lines. Genes whose activity differed significantly are involved in circadian rhythm, learning, courtship, neurotransmitter secretion/transport, and response to stress. Interestingly, many of the genes in these categories were down-regulated in the high aggression line compared to the low aggression line. This study also identified several novel genes implicated in aggression, highlighting how functional genomics can complement classical forward genetic screens in traditional genetic model systems.

The genomic response to a challenge within a species can also be plastic and vary with season. Male song sparrows, *Melospiza melodia*, for example, display territorial defense in the form of vocalizations. The type of song reflects the level of aggression and can be used as a predictor for whether the social interaction will result in an attack or flee [250]. A recent transcriptome analysis not only revealed that a subset of genes is differentially regulated between individuals encountering an intruder compared to non-social controls, but that these gene sets respond differently to social stimuli according to season [188]. This study indicated that the animals have a genomic response to a social challenge, and that the genomic response can vary with environmental input.

Gene modules that regulate response to social challenges can be influenced by both environment and evolutionary history. An elegant microarray study by Alaux and colleagues [2] in honeybees (*Apis mellifera*) showed that the same genes that are constitutively up-regulated in an aggressive strain, the Africanized bees, com-

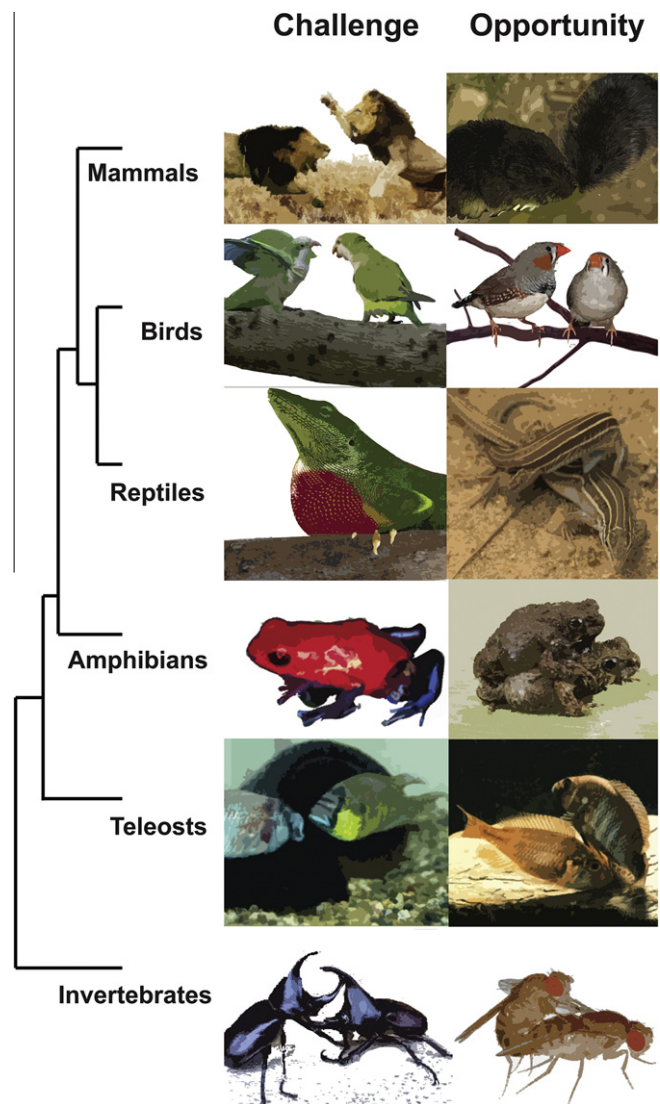


Fig. 2. Challenge and opportunity: a functional framework. Behavioral responses to challenge and opportunities in the social environment are equivalent across animals, although the specific behavioral response may be divergent across lineages due to life history, ecology, and/or evolutionary history.

pared to the more docile European bees are the same genes that are up-regulated when European bees are presented with alarm pheromone, a challenge that triggers aggressive responses in defense of the colony. Interestingly, the activity of these genes was also increased in older bees compared to younger bees, in line with the observation that aggressive behavior increases as these animals age and assume defense-related tasks.

Another genomic model system of aggression in the context of male–male competition is the cichlid fish, *Astatotilapia burtoni* [102,304]. Dominant males are highly aggressive and defend territories where they court and spawn with females, whereas subordinate males are reproductively suppressed and school with females. Importantly, these behavioral phenotypes are plastic as subordinate males will challenge dominant males for access to resources. Microarray analysis revealed that dominant males express higher levels of some neuroendocrine-associated genes, like vasotocin and prolactin, as well as structural proteins, like actin and tubulin, compared to subordinate males [223]. These studies have given important insights into the genomic regulation of social dominance behavior in a community context.

In nature, challenge and opportunity rarely present themselves in isolation, which is an important factor in designing comparative experiments in this context. Recent studies in *A. burtoni* highlight the complex relationship between these functional contexts. For example, subordinate males with an opportunity to ascend in social status (and thus to obtain a territory for mate attraction) display aggressive behavior towards potential territorial challengers within minutes of being provided with a vacant shelter, followed closely by an increase in sex steroid hormones. There is a rapid genomic response to social ascent as expression of the immediate early gene *egr-1* in preoptic GnRH neurons is induced, as well as sex steroid receptors and steroidogenic acute regulatory (StAR) protein, which regulates androgen production, in the testes [32,173,174].

Behavioral responses to opportunities are often studied in the context of female mate choice and male courtship, although behavioral patterns associated with foraging and habitat selection have been studied in detail as well [264,267]. It is well established that sensory cues influence mate choice [37,234], but only recently has a combination of genomic and candidate gene approaches, coupled with hormonal and behavioral measures, begun to illuminate the molecular substrates of mate choice in the female brain. In female swordtails, *Xiphophorus nigrensis*, the presence of an attractive male stimulus elicits a remarkably fast (within 30 min) genomic response in 306 (8.9%) of the 3422 genes examined in a study by Cummings et al. [52]. Importantly, these authors found that 77 of these genes were associated with mate choice conditions (i.e., whether the female was allowed to choose between an attractive and non-attractive male, or whether she was exposed to two non-attractive males), and that the majority of these genes were down-regulated compared to the other social conditions. Also, the gene expression patterns in females exposed to mate choice conditions were almost exactly inverse to those exposed to other females: Genes that were down-regulated in females in the mate choice treatment were up-regulated in the female social control and vice versa.

The finding that the vast majority of genes associated with mate choice were down-regulated compared to the other social conditions is consistent with the classic notion that the execution of behavior is tightly controlled by central inhibitory mechanisms [231]. Cummings et al. [52] thus suggested that down-regulation of a suite of genes (i.e., suppression of activity at the molecular level) might result in the release of this (physiological) central inhibition of neural circuits that govern female mate choice. It would be fruitful to investigate the genomic responses in the context of female mate choice in other species to better understand the underlying genomic mechanisms and how they relate to the physiology of brain circuits. Anurans provide a tractable model system for this fundamental question in biology, and recent studies in the túngara frog, *Physalaemus pustulosus*, by Hoke and co-workers in the context of phonotaxis have examined immediate early gene induction in response to a mate choice stimulus as a proxy for neural activation [122–124]. These studies have begun to delineate the brain networks involved in assessing – and responding to – male call patterns and established an important foundation for understanding where in the brain mating decisions are made [125].

The act of courtship and mating also elicits a genomic response in female *Drosophila*. Following a courtship ritual that relies on multiple sensory cues from both sexes [103], genomic profiling was done for the whole animal [163]. Females that were courted but did not mate showed differential gene expression compared to females that were not courted, and females that were courted and mated had an additional gene set that was differentially regulated compared to females that had been courted but did not mate. This work suggests that the integration of sensory cues from the courtship experience influences a female's transcriptome in addition

to the actual mating event. It remains to be seen which transcriptional changes were elicited in the brains of courted and mated females, as whole-organism profiling likely masks brain-specific gene regulation.

Insights into the neural basis of opportunistic foraging behavior have come from genomic studies in insects. Honeybees (*A. mellifera*) exhibit a distinct behavioral transition from hive-bound duties to pollen foraging. This transition is associated with striking changes in the brain transcriptome on the order of thousands of genes [294], predominantly in transcription factors [106] and genes associated with metabolic processes [4]. Some of the genes involved in these processes show a conserved mechanism across insects. For example, the gene *foraging* (or *for*) is higher in forager bees than in hive bees [20], and also varies between fruitflies expressing the rover (actively foraging) phenotype compared to the sitter phenotype (*D. melanogaster*; [259]). A recent study by Toth and colleagues [281] that used transcriptome analysis to compare brains of paper wasps (*Polistes metricus*) and honey bees suggests that gene expression associated with foraging behavior is highly conserved in social insects, while the activity of genes associated with reproductive behavior is more variable, possibly due to the major differences in the mating system of these two species.

The challenge and opportunity framework allows the development of behavioral paradigms that are applicable across many species. We have presented evidence that genomic responses to opportunities, such as foraging in insects, are similar across species, supporting the notion of conserved gene sets regulating functionally equivalent behavioral responses. More generally, our framework predicts that there is significant overlap between gene sets regulating foraging and those regulating mating behavior within and/or across species. However, variation in genomic responses, such as those found in the context of reproduction in insects, are also informative as they provide insight into how unique behavior patterns may have evolved in a lineage-specific manner, e.g., in response to unique selection regimes. Importantly, variation in genomic responses to functionally equivalent social stimuli can also reveal species differences in the relative contribution of different sensory modalities in association with a conspecific versus a food source.

Within this framework of challenge and opportunity, we can now begin to ask to which extent the molecular substrates underlying these behavioral responses might be conserved across diverse species [229]. However, few such analyses have been attempted thus far across relatively closely related species [168,258]. This is, of course, at least in part due to the still small number of genomic analyses of behavior, partially due to the limited genomic tools available for some species. However, a more fundamental limitation lies in the multitude of divergent behavioral measures researchers have developed to assess behavioral responses in diverse species [213]. We therefore need to consider whether there is a common “currency” for behavioral measures that can facilitate comparative analyses.

4. Approach and avoidance

In order to ask questions about the causation or development of behavior, there must first be fundamental behavioral measures that are principally valid across most species. Behavioral displays exhibited in the context of challenge and opportunity can usually be classified as either *approach* towards, an *avoidance* of (*withdrawal* from), or a passive response to a relevant stimulus. From the viewpoint of proximate mechanisms, this concept provides us with a heuristic framework for comparative studies aimed at development or causation of behavior across even diverse species [216,243,275]. Using the approach/avoidance scheme (including

passive responses) in relation to environmental or social stimuli (summarized by [243]; see also [180,187]), we can operationally define shared behavioral categories that are independent of the specific sensory modalities or idiosyncratic motor patterns, which may characterize species-typical behaviors in each taxon (Fig. 3).

The decision to either approach or avoid a stimulus naturally has implications for the survival and reproduction of an individual. In noxious situations it may be most advantageous to withdraw, while an approach response is most appropriate to a mate or food resource. It is important to note that the appropriate response of an individual is dependent on prior experience, condition of the individual, and brain gene expression, and specializations in these mechanisms may have appeared through natural selection of traits that favor approach or avoidance in different situations [243]. Furthermore, this framework allows a quantification of behavior in relation to physiological and molecular measures, such as hormone levels or gene expression, to determine how these variables may covary across species.

There is a rich literature in behavioral ecology examining approach and avoidance responses, often in the context of foraging [reviewed by [266] and predator avoidance (reviewed by [65,105]). Propensity to approach or avoid a particular stimulus has a genetic basis that suggests there is within and between species variation in these adaptive responses [27,162,291]. These behaviors are comparable across taxa and have been documented in invertebrates and vertebrates in response to attractive or noxious stimuli [74,138,242,266,278].

Functional studies investigating the genetics underlying approach/avoidance behaviors have mostly focused on odor-guided behavior, and studies exploiting other sensory modalities are needed. In many species, olfactory information provides salient information about species identity, sex, social status, and/or reproductive condition [28,107,139,142,307]. Anholt [6] and colleagues identified several genes involved in the odor-avoidance response in *Drosophila* using mutant lines that failed to respond to a noxious odor. Loci disrupted in these mutants include ion channels and genes implicated in odor recognition or postsynaptic organization. Mutant mice that have deletions of neuropeptide or steroid hormone receptor genes also have disrupted olfactory recognition [reviewed in [142]. These knockout strains can recognize predator (cat) odors but fail to recognize parasitized conspecifics [142,143].

Social networks can also influence an individual's response of approach or withdrawal to a stimulus. Work in guppies (*Poecilia reticulata*) has shown that behavior of individuals within the shoal can influence both foraging behavior and avoidance of noxious

stimuli. In guppies, individuals will prefer the routes established by shoal founders either during foraging or while escaping predators, which suggests that social information facilitates decisions about movement in the local environment [29,160]. Social approach behavior, such as female mate choice, can also be influenced by group dynamics, as mate choice copying has been documented in every vertebrate lineage [86,147,159,220]. However, this transmission of approach or avoidance decisions through social groups can sometimes be maladaptive and prevent the adoption of optimal behaviors. For example, Laland and Williams [161] trained founder guppies to prefer a longer (more costly) route to a food source over a shorter route (less costly). Other guppies adapted this behavior and this maladaptive preference persisted even after the founder guppies were removed. Guppy avoidance behavior has a genetic component as animals from high or low predation populations will differentially respond to predator-induced alarm pheromones [128]. To date, no genomic analyses have been carried out in the context of social networks, though it would be interesting to determine the molecular correlates of information transmission in social groups.

In summary, while the challenge/opportunity framework provides equivalent social contexts in which to conduct experiments, the approach/avoidance framework makes possible quantification of behavior in ways that transcends species-specific conditions and sensorimotor processes, and thus facilitates the comparison of behavioral mechanisms across diverse taxa. For instance, approach/avoidance measures have a rich history in opportunity behaviors such as foraging [266] and mate choice [234], in strong support of the notion that "molecular universals" hypothesis can in fact be adequately tested. It is, however, important to note that the (proximate) approach/avoidance framework is most useful only when applied within carefully chosen (ultimate) challenge/opportunity contexts of adaptive relevance.

The behavioral responses of approach and avoidance must have neural origins that are specific to both defined brain regions and neurochemicals used to process the relevant information. Many mechanistic studies have highlighted the fundamental role that hormones and catecholamines play in regulating these behaviors. Studying the shared behavioral mechanisms underlying social challenges and opportunities at the behavioral level will allow us to fairly compare social decisions across vertebrates.

5. Hormones and monoamines

Studying behavior in the context of neurochemicals allows us to uncover its physiological and developmental basis [15,205,299].

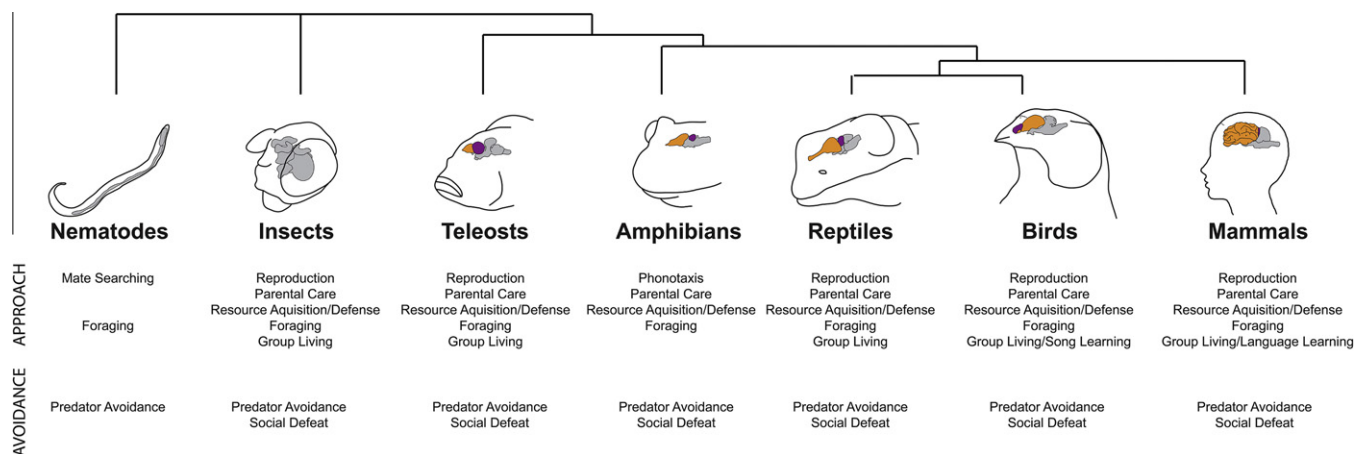


Fig. 3. Approach and avoidance: a mechanistic framework. Quantitative measures of behavioral responses to challenges and opportunities that are tractable in all species provide an important foundation for analyzing the molecular and neural basis of social behavior and its evolution. Brains are shaded differently by forebrain and midbrain.

Given this, there may be universal codes underlying the evolution of behavioral mechanisms similar to the homeotic pathways that have become fundamental to our understanding of the evolution of developmental mechanisms. The crucial role of dopaminergic (and other aminergic) cells in encoding the salience (or rewarding properties) of a (social) stimulus appears conserved in all animals studied thus far [11,58,111,157,225,285,306]. For example, studies on the salience-encoding properties of the dopaminergic system in worms, insects, and vertebrates provide a framework for understanding drug addiction in humans [19,78,192,195,241]. More generally, the modulatory role of various neuroendocrine and neurotransmitter systems (neuropeptides, steroid hormones, biogenic amines) in social behavior is conserved across species, even though the specific manifestations of the behavior can vary greatly across species and/or conditions [1,21,282,306]. These patterns have also been investigated in human social cognition and attachment [79]. Above, we briefly addressed the involvement of catecholamines and hormones in approach/avoidance behavior from the perspective of behavioral ecology, and we will now discuss in greater detail the role of these neurochemicals in modulating behavior.

5.1. Hormonal modulation of approach and avoidance

The hormonal basis of behavior has been studied for decades by behavioral neuroendocrinologists, who have made great advances in understanding how the complex interactions of the brain and physiology result in meaningful behavioral responses. A classic example of this is the “challenge hypothesis”, which predicts how androgen levels and dynamics relate to social behavior across diverse social systems and environments [300]. This powerful framework, originally developed for androgen responses in birds [300], has been expanded to other hormones (glucocorticoids, progesterone, juvenile hormone, etc.) and other animal taxa including mammals [57,204], reptiles [136,148], amphibians [33], teleost fish [60,115,202], and more recently to invertebrates [150,248,276]. However, some species appear to lack androgen responses to social challenges [184,249,289], possibly due to differences in ecology or mating system (see also the meta-analysis by [115]). Although endocrine responses to challenges, such as male–male interactions, have been studied in detail, hormonal changes in response to social opportunities have received less attention. A small number of studies in a range of taxa have clearly established that similar processes can occur in opportunity contexts when males are exposed to females (birds: [183,185,200]; mammals: [5]; fish: [262]). More comparative investigations into the challenge hypothesis in species with diverse life histories and mating systems will yield a better understanding of the evolution of hormonal responses to social challenges and opportunities.

Both sex steroids and neuropeptide hormones have been implicated in modulating all facets of social behavior including aggression [81,92,260,282], sexual behavior [10,130], parental care [61,165,189], and sociality [41,67,95]. Sex steroid hormones can affect neural circuits and behavior via long-lasting genomic mechanisms that involve changes in gene expression [203,286] as well as through rapid effects mediated by signal transduction cascades [170,176,222]. Neuropeptides, in contrast, exert their actions exclusively through signal transduction cascades [114,208]. Herbert [113] proposed the notion of a neurochemical code to describe the spatial and temporal dynamics of neuropeptide regulation in the brain. In this framework, one or more neuropeptides or steroid hormones act both independently and in concert to regulate complex behavioral outputs. These actions may be directed at a single target or involve multiple regions within a circuit, creating a “chemical coding system” that organizes adaptive behavioral responses to environmental (including social) challenges and opportunities. Her-

bert [113] already suggested that other neurochemicals, such as biogenic amines and steroid hormones, should be included in this model, as all these compounds can act on approach and avoidance behaviors [12,82,129,175,171,182,232].

The decision to approach or avoid a stimulus can be modulated by neuropeptides, and these experiments are usually in the context of social stimuli rather than foraging (reviewed in [98]). For example, in male goldfish (*Carassius auratus*), social approach is modulated by arginine vasotocin (AVT), the non-mammalian homolog of arginine vasopressin (AVP), in that this nonapeptide inhibits social approach to another male, whereas an AVT receptor antagonist increases social approach in low-responding social fish [275]. Furthermore, injections of another nonapeptide, isotocin (the teleost homolog of mammalian oxytocin), also increases social approach in low-responding fish, showing that AVT and isotocin have opposite effects on male–male sociality in goldfish. Interestingly, a number of studies in other teleosts demonstrated that AVT treatment can stimulate courtship displays towards females [14,239,251], possibly suggesting opposing effects of this neuropeptide depending on the sex of the stimulus animal. These findings underscore the importance of studying neuropeptide modulation of approach/avoidance behavior in both challenge and opportunity contexts for a given species.

Although the modulation of neuropeptide regulation of approach avoidance may vary with social context, there is also variation in neuropeptide response between species (reviewed in [98]). Detailed insights into the molecular and genetic mechanisms of neuropeptide regulation of social approach and avoidance have mostly come from comparative studies of *Microtus* voles, the monogamous prairie vole, *Microtus ochrogaster*, and the polygamous montane vole, *Microtus montanus* (reviewed in [310]). Infusions of an oxytocin receptor antagonist into a female prairie vole before mating will block pair bond formation [131] while oxytocin infusions will enhance bond formation even in the absence of mating [298]. In males, injection of an AVP receptor antagonist decreased partner preference and AVP infusions facilitate partner preference, even in the absence of mating [301]. It is the genetically regulated spatial variation in AVP receptor and oxytocin receptor expression throughout the brain that facilitates the formation of pair bonds in prairie but not montane voles. This literature has been extensively reviewed elsewhere [24,132,166,209,310], although it should be noted that genome-scale studies are lacking thus far.

Lipid hormones can also influence approach behavior, although this relationship has been studied much less compared with the role of nonapeptides. One of the better known players is prostaglandin F₂α (PGF₂α), which in teleost fishes acts as an endogenous releaser of reproductive behavior in females and as an exogenous releaser in males. Specifically, PGF₂α, which is released from ovarian tissues during final egg maturation, elicits the full repertoire of female reproductive behaviors even in non-gravid females treated with this hormone [44,253,261,288]. Additionally, gravid females release PGF into the surrounding water, where it acts as a pheromone to elicit courtship behavior in males [261]. As most teleost fishes are broadcast spawners that require close coordination between males and females during spawning to ensure fertilization of the eggs, these actions of PGF₂α are important for the synchronization of required approach behaviors of males and females during reproduction.

5.2. Regulation of approach and avoidance behavior by monoamines

The mechanistic analysis of approach and avoidance behaviors across a diverse set of species has clearly shown that, in addition to neuroendocrine modulators, the biogenic monoamines dopamine (DA) and serotonin (5-hydroxytryptamine, 5-HT) play a fundamental role. Specifically, 5-HT modulates escape (avoidance)

behavior in many animals (mammals: [279]; teleosts: [101]; crayfish: [72,91,308]; sea slug: [137]). In vertebrates, 5HT is better known for its role in impulsivity and aggression [47,70,126,215].

Ever increasing evidence from diverse organisms ranging from worms to insects to vertebrates suggests that the evaluation of stimulus salience is regulated by catecholamines, particularly DA [7,22,157,196,263]. DA is an evolutionarily ancient biogenic amine that is found in most eukaryotes, where it is synthesized (along with norepinephrine and epinephrine, or octopamine in invertebrates) from tyrosine [36,158,302]. In many animals, DA plays an essential role as a neuromodulator in many behavioral processes, such as selection of motor programs, pair bonding, aggression, sexual behavior, and learning and memory [56,130,146,151,179,235,311].

Evidence for the role of monoamines in decision-making comes from extensive work on locomotion in the leech *Hirudo medicinalis* and the nematode *Caenorhabditis elegans*. Behavioral switching between two different locomotor patterns constitutes an important behavioral approach/avoidance choice that is critical for survival of these animals, and monoamines play an important role in this locomotor choice ([155,211,265], reviewed in [179]). DA not only activates crawling behavior in leeches, but also inhibits swimming behavior [51], which may be important for switching from searching to feeding behavior after finding a food source, whereas serotonin facilitates swimming behavior [87]. Similarly, DA also plays a role in nematode locomotion, as dopamine facilitates a behavioral switch from crawling to swimming [179]. 5-HT has also been implicated in promoting mate-searching behavior in male *C. elegans* [167], supporting a conserved role for monoamines in approach and avoidance behavior across large evolutionary distances.

It is becoming increasingly clear from work in insects that the role of DA in motivation is conserved beyond vertebrates. In *Drosophila*, for instance, DA action in the mushroom bodies (an association center of the insect brain) influences the decision to fly based on how the salience of visual cues is evaluated [312]. Pharmacological manipulation of DA receptors in both crickets and *Drosophila* also supports a role for this amine in encoding positive or negative valence when exposed to particular stimuli [151,285,290].

The complex social organization of honeybees has fascinated naturalists for centuries, and it is thus exciting that the molecular regulation of colony behavior is now becoming unraveled, as we already discussed the insights obtained from genomic analyses of honeybee behavior (see Section 3). In addition, several recent studies have provided evidence that catecholamines regulate behavioral motivation in this species as well. Beggs and co-workers have shown that pheromones released by the queen bee modulate behavioral circuits in workers by lowering DA levels, which in turn may serve to facilitate colony chores [17,18].

In vertebrates, DA plays a fundamental role in encoding the rewarding properties of a stimulus, or its valence [22,244–246]. In rodents, two model systems have jumpstarted our understanding of dopaminergic regulation of social behavior. First, work by Hull and colleagues in male rats, *Rattus norvegicus*, has elucidated the reinforcing properties of sexual experience, as DA is released into the preoptic area after sex (reviewed in [66,129]). Second, DA also reinforces pair bond formation in the monogamous prairie vole [53]. Given these important insights, it is thus not surprising that research into the role of DA in natural behaviors is now expanding to other vertebrates. In male songbirds, for example, DA plays an important role not only in song learning, but also in regulating context-appropriate song production in both challenge and opportunity contexts (reviewed in [157]). In reptiles, a few studies have implicated DA in reinforcing social behaviors: In male whiptail lizards, *Cnemidophorus inornatus*, sexual vigor is associated with the expression of tyrosine hydroxylase (TH; the enzyme that catalyzes the rate limiting step in catecholamine synthesis; often used as a marker of DA neurons) in the preoptic area [305]. In

male leopard geckos, *Eublepharis macularius*, an opportunity to approach a female elicits a DA surge in the nucleus accumbens [62], suggesting that dopamine also plays a role in motivation or anticipation in reptiles. Unfortunately, at this point there is little evidence from amphibians or teleosts regarding the role of dopaminergic modulation of social behavior, but we predict that this will quickly become an avenue of interesting research that will lead to greater insights into the evolution of dopaminergic regulation of behavior in early vertebrates.

5.3. Importance of resolved molecular homologies

The study of the neurochemical and hormonal influences on behavior warrants a discussion of variation in the processing of neurochemical and molecular signals across vertebrates. Due to gene (or genome) duplication or gene loss and genetic divergence, a comparison of the gene products involved in these cascades of signal processing should be based on four criteria: (i) binding affinity of the receptor for the ligand; (ii) sequence similarity of the gene product; (iii) its tissue-specific expression patterns in the brain; and (iv) the nature of the signaling pathway. Not surprisingly, we find variation in all these variables, between vertebrates and invertebrates and, to a lesser extent, across vertebrate lineages as well, which offers an exciting opportunity to examine how this variation is related to life history, social system, and ecology of diverse species and their evolution. Although comparative studies looking specifically at the molecular evolution of neuroendocrine mechanisms regulating social behavior are lacking, a stimulating genome-scale study by McGary et al. [177] identified numerous protein-interaction networks that are highly conserved (orthologous) across eukaryotes (humans, mice, plants, worms, and yeast), even though the phenotypes they help generate may be diverged. The authors conclude that functional analyses of these orthologous protein networks (which they termed “phenologs”) in one model system can thus provide important insights into the molecular underpinnings of seemingly unrelated phenotypic traits in other species [177]. We suggest that similar analyses should be conducted in the context of the neurochemical and molecular processes regulating social behavior. This would not only increase our understanding of the underlying neural and gene networks, but also allow us to determine whether for a given behavioral response these processes might indeed be conserved across organisms. For example ancient gene (or protein) networks may operate in diverse species in a multitude of behavioral contexts.

The neurochemical code, as proposed by Herbert [113], can only be understood within the context of complex spatial and temporal activation patterns in networks of dedicated brain nuclei. We therefore need to discuss the neural circuits that govern, for instance, reward processing and social behavior [58,194] within the integrative framework we are proposing in this review.

6. Neural circuits governing reward processing and social behavior

In most animals, coordinated neural circuits facilitate information processing into adaptive behavioral decisions. By studying behavior patterns within the context of neural circuits (rather than a single neuron or brain region), we can begin to understand the neural processing and integration of external environmental cues and internal physiological cues to produce the appropriate behavioral output. The study of relatively simple motor patterns and their underlying neural circuitry, like the Mauthner-cell mediated escape response in teleost fishes [75] or central pattern generators [141,172], provides an opportunity to understand how neural circuits act in concert to generate simple behaviors, and how much

the circuit can vary from animal to animal while still maintaining function [102]. Similarly, orientating responses, such as phonotaxis in crickets and anurans [90,100,145], chemosensing in bacteria [207], and active sensing in bats and electric fish [190,221] have given us molecular or neural insights into how animals process information in the environment using highly specialized sensory mechanisms.

As far as the regulation of social decision-making in vertebrates is concerned, two neural circuits seem to be fundamental (Fig. 4): the mesolimbic reward system, with a central role for the connection between the dopaminergic ventral tegmental area (VTA) and the nucleus accumbens [58,295]; and the social behavior network [194], a collection of midbrain, hypothalamic and basal forebrain nuclei sensitive to sex steroid hormones and involved in sexual [13,110,123], aggressive [59,89,191], and parental behaviors [85,233]. Insights from birds and mammals have shown that regions involved in both the mesolimbic reward system and social behavior network are important in regulating naturally rewarding behaviors, such as sex [88,129,206], winning a fight [89], parental care [42], pair bonding in monogamous rodent species [311] and bird song and sociality [94,97,111,228]. Here we briefly discuss the progress made in understanding these circuits in vertebrates, although the studies published thus far typically focus on manipulating only one or two brain regions within a circuit. As deep sequencing technologies become less costly, it is our expectation that it will become feasible to profile the transcriptomes of several brain regions within a single individual to better understand how shifts in network gene expression influence behavior.

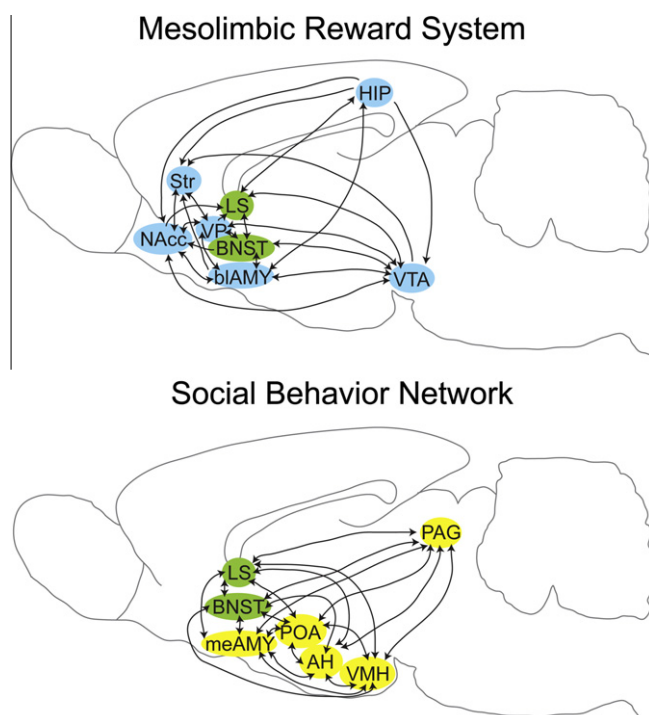


Fig. 4. A neural circuit framework. Schematic representations of a mammalian brain are shown with brain regions of the mesolimbic reward system (blue; top panel) and social behavior network (yellow; bottom panel). Regions shared by both circuits are labeled in green. Adapted from Ref. [199]. Arrows indicated directionality of functional connections between brain regions. Abbreviations: AH: anterior hypothalamus; blAMY: basolateral amygdala; BNST: bed nucleus of the stria terminalis; HIP: hippocampus; LS: lateral septum; meAMY: medial amygdala; NAcc: nucleus accumbens; PAG/CG: periaqueductal gray/central gray; POA: preoptic area; STR: Striatum; VMH: ventromedial hypothalamus; VP: ventral pallidum; VTA: ventral tegmental area.

6.1. The mesolimbic reward system

Animals must assess the relative value and consequence of an external stimulus in order to generate an adaptive response. Many studies indicate that the mesolimbic reward system (including but not limited to the midbrain dopaminergic system) is the neural network where the salience of such stimuli is evaluated [58,295]. This circuit is characterized by massive dopaminergic projections from the VTA to the nucleus accumbens. Most depictions of the reward system also include the lateral septum, ventral pallidum, striatum, basolateral amygdala, the bed nucleus of the stria terminalis, and the hippocampus. Due to its biomedical relevance in the context of addiction and depression, it is not surprising that the mesolimbic DA system is best studied in mammals [149,169,274]. These well-studied addiction disorders are deleterious manipulations of a network that encodes the potential value and positive reinforcement effects of behavior [54,55,197].

As the functional contexts in which animals behave (i.e., male–male aggression, mate choice, foraging, etc.) are equivalent across diverse species, it is reasonable to hypothesize that the reinforcing role of the mesolimbic dopamine system is conserved across vertebrates. Although no functional genomics studies have examined the reward system in non-traditional model systems with complex social behaviors, many studies have implicated the VTA in evaluating the salience of a stimulus, as well as reinforcing the production of rewarding naturalistic behaviors. Perhaps the best known example for involvement of the mesolimbic reward system in reinforcing naturalistic behaviors comes from the *Microtus* voles and pair bonding (reviewed in [309,311]). The strength of this system lies in the comparative work between two mating systems, and should encourage comparative studies for other social systems in order to increase our understanding not only of the molecular mechanisms underlying complex behaviors but also how these complex behaviors have evolved. As more genomic resources become available, we will be able to better understand not only the transcriptome changes associated with pair bonding, but also parental care and aggression [178].

The role of the mesolimbic reward system is particularly apparent in song production in many species of songbirds [64]; for a recent review see [157]. VTA neurons are more active during courtship singing than during undirected (non-courtship) singing [108,127]. Immunoreactivity for TH in the VTA is also context-dependent, as higher immunoreactivity is associated with courtship calls and not with undirected calls [111]. Further, ablation of dopaminergic neurons in the VTA results in a deficit in female-directed song, but not undirected song [108]. Given the evidence that the reward system plays a role in male song production in specific social contexts, it is surprising that no work has been done thus far in female birds exposed to attractive calls compared to undirected calls, but we predict that this will be a fruitful avenue of research.

Insights into the contribution of the VTA to reproductive decision-making in females has come from studies on anuran mate choice, in which females display phonotaxis (approach) behavior to attractive calls [234]. Lesions of dopaminergic neurons in the putative VTA homolog of the anuran brain disrupt female phonotaxis behavior such that its expression is correlated with the number of TH-neurons remaining in this region [73]. Studies that quantified induction of the immediate early gene *egr-1* as a marker for neuronal activation have also strengthened our knowledge of VTA-like neurons mediating mate choice in anurans. Specifically, female túngara frogs exposed to male conspecific calls exhibited strong induction of *egr-1* in the VTA [123], suggesting that a cellular response in this region contributes to female decision-making in anurans.

Research in female rodents has further expanded our understanding of the cellular and genomic processes involved in mediat-

ing the rewarding neural response to sexual behavior in multiple forebrain regions. Female sexual experience produces changes in neuronal activity within the nucleus accumbens and dorsal striatum [16,26,135], similar to drug use [34,210]. Using transcriptome analysis, Bradley and colleagues [25] found that prior sexual experience in female hamsters (*Mesocricetus auratus*) altered distinct gene sets within the nucleus accumbens and dorsal striatum including ion channels, transcription factors, neurotransmitter receptors, and genes involved in signal transduction. Sexual experience was administered by placing a male in the female's home cage once a week for six weeks. Experienced females that had sex on the final test day had a dramatic genomic response, with increased expression of many genes in these basal ganglia regions compared to sexually naive animals that had sex on the final test day. In contrast, sexually experienced females that did not have sex on the final test day showed a dramatic decrease in gene expression compared to sexually naive females that also did not have sex on the final test day. This study not only demonstrated that in the reward system certain gene sets are regulated by sexual experience, but that anticipation of a sexual encounter in sexually experienced females that were (against expectation) not exposed to a male on the final test day led to a depression of gene expression in the nucleus accumbens and dorsal striatum, similar to the anticipation of a food or drug reward in trained animals [193]. These results underscore the notion that genomic responses underlying natural behaviors are inherently rewarding at the molecular level.

An individual's ability to adapt to chronic social stress is also mediated by the mesolimbic reward system [76]. There is surprising individual variation in this response even within inbred c57bl/6 mice, as some individuals will be highly susceptible to social defeat by displaying long-lasting social avoidance behavior while others will be resilient [23]. Transcriptional profiling revealed that key adaptive changes in the VTA underlie an individual's propensity for reliance or susceptibility to social defeat. Krishnan and colleagues [154] showed that there is an adaptive transcriptional response in resilient mice that results in an up-regulation of potassium channels in the VTA, thus altering the excitability of VTA neurons and an associated release of brain-derived neurotrophic factor (BDNF) into the nucleus accumbens. These groundbreaking studies have taught us that there can be dynamic changes in genome activity even in the absence of a behavioral response (e.g., resilience to social defeat). In fact, it is the mice that display social avoidance after social defeat that do not mount a genomic response to chronic stress. In a similar study, mice with chronic social stress (exposure to highly aggressive dominant male) down-regulated several genes in the hippocampus, including many transcription factors and ion channels as well as some gene products involved in metabolism and the cell cycle [77]. This body of work also highlights the importance of profiling the transcriptome in several brain regions in order to better understand how interconnected brain regions contribute to approach/avoidance behaviors. We predict that, as genomic technologies become more available, there will be more transcriptome studies looking at the contribution of the mesolimbic reward system to natural social behavior.

6.2. The social behavior network

Newman [194] presented a useful framework encompassing six brain regions implicated in the regulation of social behavior in mammals. The nodes of this "social behavior network" – lateral septum, extended medial amygdala (i.e., medial amygdala and bed nucleus of the stria terminalis), preoptic area, anterior hypothalamus, ventromedial hypothalamus, and periaqueductal gray/central gray – are all reciprocally connected [45,46,226] and express sex steroid receptors [186,255]. Although originally proposed

for mammals, Crews [48] and Goodson [94] soon applied this framework to other vertebrate lineages. In reptiles, data from leopard geckos suggest that behavioral variation due to egg temperature incubation is correlated with the functional connectivity within this network [237,238], whereas studies in the plainfin midshipman fish, *Porichthys notatus*, which displays characteristic acoustic patterns based on social context and phenotype, have shown that at least some of these nodes are present in fish and modulate the vocal-acoustic circuitry [96]. Finally, this network has also been extended to birds where it plays a role in mediating sociality across species (reviewed by [94]). Taken together, there are multiple lines of evidence that this network was already in place in early vertebrates.

Surprisingly, there are no genomic studies within naturally (not hormonally manipulated) behaving animals investigating the genomic response of brain regions within the social behavior network to social behavior stimuli, although as sequencing technologies become cheaper and more readily available to non-traditional model systems, we predict that this will become an area of intense research.

Already, researchers have begun to analyze the potentially important effects of epigenetic modifications on brain function and behavior [144,313]. For example, a recent study by Gregg et al. [104] used next-gen sequencing to examine the epigenome in one hypothalamic node of the social behavior network, the POA, as well as several brain regions regulating motivation, such as the VTA and the nucleus accumbens. The authors found that in the adult POA there are significantly more genes expressed from the paternal, compared with the maternal, genome, although the behavioral consequences of this parent-of-origin bias in expression still need to be examined in detail. However, we already know from studies by Meaney and colleagues [140,293] that experience-dependent epigenetic reprogramming of single genes, such as the glucocorticoid receptor in the hippocampus, can result in significant differences in adult stress reactivity and maternal behavior of rodents. These studies highlight the growing appreciation of epigenetic effects that can lead to variation in social behavior [49,50,69,292]. Given the advances in sequencing technology, this area of research will soon greatly benefit from comparative analyses.

6.3. Importance of resolved brain homologies

Understanding the evolution of the neural substrates that underlie social behaviors across vertebrates ultimately depends on establishing reliable homology relationships for the brain regions in question [199,271]. Determining homologies across all major vertebrate lineages has been especially challenging, as brain architecture is remarkably diverse [270]. However, comparative neuroanatomists have made great strides towards increasing our understanding of brain evolution, homology, and neurochemistry [30,84,197,198,257]. Homologies have been inferred for many of the fore- and midbrain regions discussed in this review based on a number of criteria, including topography, homology, development, neurochemical profiles, and functional lesion and stimulation studies. A recent survey by the authors [199] determined that most of the homologs to the mammalian brain regions that are part of the mesolimbic reward system and/or the social behavior network can be identified with some confidence across the major vertebrate classes, including mammals, birds, reptiles, amphibians, and teleosts. Yet despite this progress, the information available covers only a handful of species in each lineage and no systematic surveys have been conducted to include closely related species with diverse social systems. Many of the interesting questions addressing the neural evolution of social behavior are best addressed in clades that have diverged mating systems or sociality,

such as *Microtus* voles, estrildid finches, and cichlid fishes [99,209,213,272]. These comparative systems have increased our understanding of how small changes in gene expression or brain development can lead to such striking variation in social behavior.

7. The evolution of neuroethological systems

We have reviewed here four conceptual areas that form the foundation for an integrative analysis of the neural and developmental mechanisms and evolution of adaptive social behavior, as envisioned almost half a century ago by Tinbergen [277]. Due to the remarkable conceptual advances brought about by behavioral ecologists, neuroethologists, behavioral neuroendocrinologists, comparative neuroanatomists, and developmental biologists, and because of the astonishing technological progress in such diverse areas as neurochemistry, molecular biology, and genomics, we are finally in a position where we can fulfill Tinbergen's vision.

We have presented here evidence that all animals have similar behavior responses to challenges and opportunities in their environment. There is a striking genomic response to these situations and similar molecules (monoamines and neuroendocrine chemicals) play a role in evaluating the environment and modulating the behavioral output. These observations raise some fundamental questions about the evolution of behavior: Were any conserved molecular processes underlying these behavioral responses assembled from a "genetic toolbox", such that orthologous building blocks are repeatedly recruited independently in various lineages, as appears to have been the case with PAX6 in eye development? Or are these processes the product of an evolutionary ancient system to respond to challenges and opportunities an individual encounters by utilizing a conserved mechanism? It may well be that the answer will depend on the phylogenetic level of analysis, such as whether one analyzes species within a specific monophyletic clade or across all vertebrates. Recent insights into the evolutionary origins and biochemical mechanisms of bioluminescence are illuminating in this context [296]. Luminescent behavior appears to have evolved independently at least 40 times, yet the process often involves similar enzymes and substrates in light-producing reactions, possibly because, as species began to conquer deeper waters, a reduction

in light-induced oxidative stress shifted the selection pressure from the antioxidative to the chemiluminescent properties of the substrate molecule [296]. There might thus indeed be evolutionary mechanisms that result in the convergent recruitment of ancient and conserved molecular pathways, which, for instance, underlie the approach of mates or avoidance of predators.

Research in yeast suggests that responses to challenges and opportunities could indeed be governed by ancient molecular mechanisms. Stern and colleagues [268] presented yeast with a severe food resource challenge, which they had never encountered in their evolutionary history, and to which they adapted over approximately ten generations. This exceptionally fast adaptation was accompanied by a global transcriptional reprogramming of over 1000 genes. Further, only a few of the responding genes were similar when the experiment was repeated, suggesting that this was largely a non-specific genomic response to novel challenge, as the overlapping genes had no significant functional similarity (according to the gene ontology framework). The authors concluded that the transcriptional response to a novel challenge is largely plastic, which is crucial for responding to broad and unexpected environmental challenges for which the genome cannot possibly have been pre-adapted in the course of evolution. In the context of our discussion here, however, this study also suggests, since similar molecular cascades are utilized in the social behavior of many animals, that these responses were in fact "written" into our genomes early on in our evolutionary history.

Systems biology has brought two hypotheses forward with which we can explain the evolution of social behavior: developmental system drift and phenologs (Fig. 5). The notion of developmental system drift, which emphasizes the plasticity of developing systems in response to selection, states that even when developmental pathways diverge through time, there may be no accompanying change in the resulting phenotype [284]. In the context of social behavior this can mean that behavioral responses or brain regions that regulate behavior can be homologous even though their morphological substrates or developmental origins are not homologous [271]. A well-understood example is that of sex determination, as sex can be determined by chromosome dosage, sex-determining genes, or environmental factors such as temperature [93,212,224,236,252]. These very different underlying mechanisms

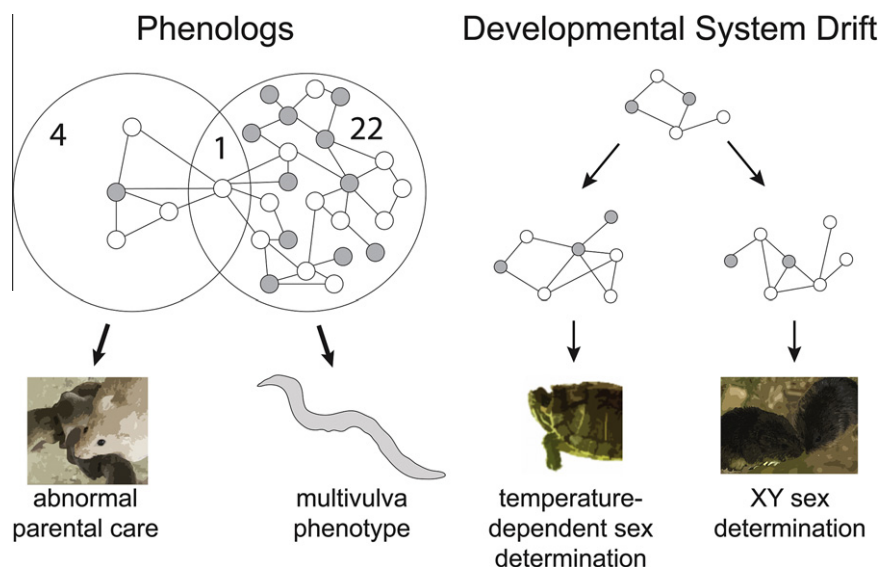


Fig. 5. Alternative hypotheses for the evolution of neuroethological mechanisms. The phenolog hypothesis predicts that some gene/protein-interaction networks underlying social behavior and other complex phenotypes can be conserved across animals, even if the phenotypes are completely different. The developmental system drift hypothesis states that the molecular mechanisms underlying homologous phenotypes can diverge substantially during the course of evolution. Nodes and edges represent gene networks involved in a phenotype.

give rise to males and females with sex-typical behaviors. In contrast, the phenolog hypothesis (discussed in Section 2) suggests that there can also be conserved gene networks associated with orthologous phenotypes [177]. A behavioral example for a phenolog is the gene network underlying abnormal parental care in mice, where an “orthologous” gene network leads to the multivulva phenotype in worms (phenologs.org). These two seemingly opposing ideas are not mutually exclusive, and can both be acting to shape different behavioral phenotypes across populations or species, where one functionally equivalent behavioral phenotype across vertebrates may have very different underlying mechanisms, whereas two different behavioral phenotypes in different vertebrates may indeed have a similar underlying mechanism.

8. Conclusion

Genomics is inherently a comparative science, as any genome is impossible to interpret without comparisons to other genomes in an effort to find protein coding regions and genetic changes that may covary with life history strategies. In the same way, the search for the molecular basis and evolution of social behavior is also a comparative task, and much work is needed to better understand putative molecular and genomic universals underlying social decisions in animals. This is particularly true for non-mammalian vertebrates as well as invertebrates, as information on how the brain regulates behavior in these groups is still relatively sparse. As information on how the neural and genomic substrates of behavior across a diverse array of animals becomes available, we will be able to determine if there are indeed molecular universals underlying the diverse behaviors that we see on our planet.

Acknowledgments

We thank Peter Dijkstra, Matthew Fuxjager, Karen Maruska, Deena Walker, and Keith Whitaker for critically reading earlier versions of the manuscript, members of the Hofmann Laboratory and the Sociogenomics Initiative, particularly Gene Robinson, for discussion of some of the issues presented here, and three anonymous reviewers for insightful suggestions on further improving this manuscript. LAO is supported by NSF DDIG 1011253; HAH is supported by NSF Grants IOS 0843712 and IOS 0751311, the Alfred P. Sloan Foundation, and a Dwight W. and Blanche Faye Reeder Centennial Fellowship in Systematic and Evolutionary Biology.

References

- [1] E. Adkins-Regan, Neuroendocrinology of social behavior, *ILAR J.* 50 (2009) 5–14.
- [2] C. Alaux, S. Sinha, L. Hasadsri, G.J. Hunt, E. Guzmán-Novoa, G. DeGrandi-Hoffman, J.L. Uribe-Rubio, B.R. Southey, S. Rodriguez-Zas, G.E. Robinson, Honey bee aggression supports a link between gene regulation and behavioral evolution, *Proc. Natl. Acad. Sci. USA* 106 (2009) 15400–15405.
- [3] V. Ambros, The functions of animal microRNAs, *Nature* 431 (2004) 350–355.
- [4] S.A. Ament, M. Corona, H.S. Pollock, G.E. Robinson, Insulin signaling is involved in the regulation of worker division of labor in honey bee colonies, *Proc. Natl. Acad. Sci. USA* 105 (2008) 4226–4231.
- [5] T.G. Amstislavskaya, N.K. Popova, Female-induced sexual arousal in male mice and rats: behavioral and testosterone response, *Horm. Behav.* 46 (2004) 544–550.
- [6] R.R. Anholt, J.J. Fanara, G.M. Fedorowicz, I. Ganguly, N.H. Kulkarni, T.F. Mackay, S.M. Rollmann, Functional genomics of odor-guided behavior in *Drosophila melanogaster*, *Chem. Senses* 26 (2001) 215–221.
- [7] B.J. Aragona, Z. Wang, Dopamine regulation of social choice in a monogamous rodent species, *Front. Behav. Neurosci.* 3 (2009) 15.
- [8] A.P. Arnold, Developmental plasticity in neural circuits controlling birdsong: sexual differentiation and the neural basis of learning, *J. Neurobiol.* 23 (1992) 1506–1528.
- [9] N. Aubin-Horth, S.C. Renn, Gene-expression signatures of Atlantic salmon's plastic life cycle, *Gen. Comp. Endocrinol.* 63 (2009) 278–284.
- [10] A.P. Auger, Steroid receptor control of reproductive behavior, *Horm. Behav.* 45 (2004) 168–172.
- [11] R.J. Bainton, L.T. Tsai, C.M. Singh, M.S. Moore, W.S. Neckameyer, U. Heberlein, Dopamine modulates acute responses to cocaine, nicotine and ethanol in *Drosophila*, *Curr. Biol.* 10 (2000) 187–194.
- [12] G.F. Ball, J. Balthazart, Seasonal and hormonal modulation of neurotransmitter systems in the song control circuit, *J. Chem. Neuroanat.* 39 (2010) 82–95.
- [13] J. Bastian, S. Schniederjan, J. Nguyenkim, Topography in the preoptic region: differential regulation of appetitive and consummatory male sexual behaviors, *Front. Neuroendocrinol.* 28 (2007) 161–178.
- [14] J. Bastian, S. Schniederjan, J. Nguyenkim, Arginine vasotocin modulates a sexually dimorphic communication behavior in the weakly electric fish *Apteronotus leptorhynchus*, *J. Exp. Biol.* 204 (2001) 1909–1923.
- [15] F.A. Beach, *Hormones and Behavior*, Paul B. Hoeber, New York, 1948.
- [16] J.B. Becker, C.N. Rudick, W.J. Jenkins, The role of dopamine in the nucleus accumbens and striatum during sexual behavior in the female rat, *J. Neurosci.* 21 (2001) 3236–3241.
- [17] K.T. Beggs, K.A. Glendinning, N.M. Marechal, V. Vergoz, I. Nakamura, K.N. Slessor, A.R. Mercer, Queen pheromone modulates brain dopamine function in worker honey bees, *Proc. Natl. Acad. Sci. USA* 104 (2007) 2460–2464.
- [18] K.T. Beggs, A.R. Mercer, Dopamine receptor activation by honey bee queen pheromone, *Curr. Biol.* 19 (2009) 1206–1209.
- [19] H.J. Bellen, The fruit fly: a model organism to study the genetics of alcohol abuse and addiction?, *Cell* 93 (1998) 909–912.
- [20] Y. Ben-Shahar, A. Robichon, M.B. Sokolowski, G.E. Robinson, Influence of gene action across different time scales on behavior, *Science* 296 (2002) 741–744.
- [21] P.J. Bentley, *Comparative Vertebrate Endocrinology*, Cambridge University Press, Cambridge, 1998.
- [22] K.C. Berridge, T.E. Robinson, What is the role of dopamine in reward: hedonic impact, reward learning, or incentive salience?, *Brain Res Brain Res. Rev.* 28 (1998) 309–369.
- [23] O. Berton, C.A. McClung, R.J. Dileone, V. Krishnan, W. Renthal, S.J. Russo, D. Graham, N.M. Tsankova, C.A. Bolanos, M. Rios, L.M. Monteggia, D.W. Self, E.J. Nestler, Essential role of BDNF in the mesolimbic dopamine pathway in social defeat stress, *Science* 311 (2006) 864–868.
- [24] I.F. Bielsky, L.J. Young, Oxytocin, vasopressin, and social recognition in mammals, *Peptides* 25 (2004) 1565–1574.
- [25] K.C. Bradley, M.B. Boulware, H. Jiang, R.W. Doerge, R.L. Meisel, P.G. Mermelstein, Changes in gene expression within the nucleus accumbens and striatum following sexual experience, *Genes Brain Behav.* 4 (2005) 31–44.
- [26] K.C. Bradley, R.L. Meisel, Sexual behavior induction of c-Fos in the nucleus accumbens and amphetamine-stimulated locomotor activity are sensitized by previous sexual experience in female Syrian hamsters, *J. Neurosci.* 21 (2001) 2123–2130.
- [27] E.S. Brodtkin, A. Hagemann, S.M. Nemetski, L.M. Silver, Social approach-avoidance behavior of inbred mouse strains towards DBA/2 mice, *Brain Res.* 1002 (2004) 151–157.
- [28] B.E. Brown, Mammalian social odors: a critical review, *Adv. Stud. Behav.* 10 (1979) 103–160.
- [29] C. Brown, K. Laland, Social enhancement and social inhibition of foraging behaviour in hatchery-reared Atlantic salmon, *J. Fish Biol.* 61 (2002) 987–998.
- [30] L.L. Bruce, M.R. Braford, Evolution of the limbic system, in: L.R. Squire (Ed.), *Encyclopedia of Neuroscience*, vol. 4, Academic Press, Oxford, 2009, pp. 43–55.
- [31] R.W. Burkhardt Jr., *Patterns of Behavior: Konrad Lorenz, Niko Tinbergen, and the Founding of Ethology*, University of Chicago Press, Chicago, 2005.
- [32] S.S. Burmeister, E.D. Jarvis, R.D. Fernald, Rapid behavioral and genomic responses to social opportunity, *PLoS Biol.* 3 (2005) e363.
- [33] S.S. Burmeister, W. Wilczynski, Social context influences androgenic effects on calling in the green treefrog (*Hyla cinerea*), *Horm. Behav.* 40 (2001) 550–558.
- [34] C. Cadoni, A. Pisanu, M. Solinas, E. Acquas, G. Di Chiara, Behavioural sensitization after repeated exposure to Delta 9-tetrahydrocannabinol and cross-sensitization with morphine, *Psychopharmacology (Berl.)* 158 (2001) 259–266.
- [35] P. Callaerts, G. Halder, W.J. Gehring, PAX-6 in development and evolution, *Annu. Rev. Neurosci.* 20 (1997) 483–532.
- [36] S. Callier, M. Snaypan, S. Le Crom, D. Prou, V.D. Vincent, P. Vernier, Evolution and cell biology of dopamine receptors in vertebrates, *Biol. Cell.* 95 (2003) 489–502.
- [37] U. Candolin, T. Salesto, M. Evers, Changed environmental conditions weaken sexual selection in sticklebacks, *J. Evol. Biol.* 20 (2007) 233–239.
- [38] S.B. Carroll, Endless forms: the evolution of gene regulation and morphological diversity, *Cell* 101 (2000) 577–580.
- [39] S.B. Carroll, Evolution at two levels: on genes and form, *PLoS Biol.* 3 (2005) e245.
- [40] S.B. Carroll, Evo-devo and an expanding evolutionary synthesis: a genetic theory of morphological evolution, *Cell* 134 (2008) 25–36.
- [41] C.S. Carter, A.J. Grippo, H. Pournajafi-Nazarloo, M.G. Ruscio, S.W. Porges, Oxytocin, vasopressin and sociality, *Prog. Brain Res.* 170 (2008) 331–336.
- [42] F.A. Champagne, D.D. Francis, A. Mar, M.J. Meaney, Variations in maternal care in the rat as a mediating influence for the effects of environment on development, *Physiol. Behav.* 79 (2003) 359–371.
- [43] R.A. Chodroff, L. Goodstadt, T.M. Sirey, P.L. Oliver, K.E. Davies, E.D. Green, Z. Molnár, C.P. Ponting, Long noncoding RNA genes: conservation of sequence and brain expression among diverse amniotes, *Genome Biol.* 11 (2010) R72.

- [44] K.S. Cole, N.E. Stacey, Prostaglandin induction of spawning behavior in *Cichlasoma bimaculatum* (Pisces cichlidae), *Horm. Behav.* 18 (1984) 235–248.
- [45] L.M. Coolen, H.J. Peters, J.G. Veening, Anatomical interrelationships of the medial preoptic area and other brain regions activated following male sexual behavior: a combined fos and tract-tracing study, *J. Comp. Neurol.* 397 (1998) 421–435.
- [46] L.M. Coolen, R.I. Wood, Bidirectional connections of the medial amygdaloid nucleus in the Syrian hamster brain: simultaneous anterograde and retrograde tract tracing, *J. Comp. Neurol.* 399 (1998) 189–209.
- [47] I.W. Craig, K.E. Halton, Genetics of human aggressive behaviour, *Hum. Genet.* 126 (2009) 101–113.
- [48] D. Crews, The development of phenotypic plasticity: where biology and psychology meet, *Dev. Psychobiol.* 43 (2003) 1–10.
- [49] D. Crews, Epigenetics and its implications for behavioral neuroendocrinology, *Front. Neuroendocrinol.* 29 (2008) 344–357.
- [50] D. Crews, Epigenetic modifications of brain and behavior: theory and practice, *Horm. Behav.* (2010), doi:10.1016/j.yhbeh.2010.07.00.
- [51] K.M. Crisp, K.A. Mescio, Beyond the central pattern generator: amine modulation of decision-making neural pathways descending from the brain of the medicinal leech, *J. Exp. Biol.* 209 (2006) 1746–1756.
- [52] M.E. Cummings, J. Larkins-Ford, C.R. Reilly, R.Y. Wong, M. Ramsey, H.A. Hofmann, Sexual and social stimuli elicit rapid and contrasting genomic responses, *Proc. Biol. Sci.* 275 (2008) 393–402.
- [53] J.T. Curtis, Y. Liu, B.J. Aragona, Z. Wang, Dopamine and monogamy, *Brain Res.* 1126 (2006) 76–90.
- [54] G. Di Chiara, E. Acquas, G. Tanda, C. Cadoni, Drugs of abuse: biochemical surrogates of specific aspects of natural reward?, *Biochem. Soc. Symp.* 59 (1993) 65–81.
- [55] C.A. Dackis, C.P. O'Brien, Cocaine dependence: a disease of the brain's reward centers, *J. Subst. Abuse Treat.* 21 (2001) 111–117.
- [56] J.W. Dalley, B.J. Everitt, Dopamine receptors in the learning, memory and drug reward circuitry, *Semin. Cell Dev. Biol.* 20 (2009) 403–410.
- [57] E.S. Davis, C.A. Marler, The progesterone challenge: steroid hormone changes following a simulated territorial intrusion in female *Peromyscus californicus*, *Horm. Behav.* 44 (2003) 185–198.
- [58] G. Deco, E.T. Rolls, Attention, short-term memory, and action selection: a unifying theory, *Prog. Neurobiol.* 76 (2005) 236–256.
- [59] Y. Delville, G.J. De Vries, C.F. Ferris, Neural connections of the anterior hypothalamus and agonistic behavior in golden hamsters, *Brain Behav. Evol.* 55 (2000) 53–76.
- [60] J.K. Desjardins, M.R. Hazelden, G.J. Van der Kraak, S. Balshine, Male and female cooperatively breeding fish provide support for the “challenge hypothesis”, *Behav. Ecol.* 17 (2005) 149–154.
- [61] C.J. Dey, C.M. O'Connor, K.M. Gilmour, G. Van Der Kraak, S.J. Cooke, Behavioral and physiological responses of a wild teleost fish to cortisol and androgen manipulation during parental care, *Horm. Behav.* 58 (2010) 599–606.
- [62] B.G. Dias, R.S. Ataya, D. Rushworth, J. Zhao, D. Crews, Effect of incubation temperature and androgens on dopaminergic activity in the leopard gecko, *Eublepharis macularius*, *Dev. Neurobiol.* 67 (2007) 630–636.
- [63] H.A. Dierick, R.J. Greenspan, Molecular analysis of flies selected for aggressive behavior, *Nat. Genet.* 38 (2006) 1023–1031.
- [64] C.W. Dobson, L. Petrinovich, Song as a reinforcer in the white-crowned sparrow, *Behav. Biol.* 9 (1973) 719–729.
- [65] S. Dodson, Predator-induced reaction norms, *BioScience* 39 (1989) 447–452.
- [66] J.M. Dominguez, E.M. Hull, Dopamine, the medial preoptic area, and male sexual behavior, *Physiol. Behav.* 86 (2005) 356–368.
- [67] Z.R. Donaldson, L.J. Young, Oxytocin, vasopressin, and the neurogenetics of sociality, *Science* 322 (2008) 900–904.
- [68] M.A. Dow, F. von Schilcher, Aggression and mating success in *Drosophila melanogaster*, *Nature* 254 (1975) 511–512.
- [69] C. Dulac, Brain function and chromatin plasticity, *Nature* 465 (2010) 728–735.
- [70] D.H. Edwards, E.A. Kravitz, Serotonin, social status and aggression, *Curr. Opin. Neurobiol.* 7 (1997) 812–819.
- [71] A.C. Edwards, S.M. Rollmann, T.J. Morgan, T.F. Mackay, Quantitative genomics of aggressive behavior in *Drosophila melanogaster*, *PLoS Genet.* 2 (2006) e154.
- [72] D.H. Edwards, N. Spitzer, Social dominance and serotonin receptor genes in crayfish, *Curr. Top. Dev. Biol.* 74 (2006) 177–199.
- [73] H. Endepols, J. Schul, H.C. Gerhardt, W. Walkowiak, 6-Hydroxydopamine lesions in anuran amphibians: a new model system for Parkinson's disease?, *J. Neurobiol.* 60 (2004) 395–410.
- [74] D.S. Faber, J.R. Fetcho, H. Korn, Neuronal networks underlying the escape response in goldfish. General implications for motor control, *Ann. NY Acad. Sci.* 563 (1989) 11–33.
- [75] D.S. Faber, H. Korn, Electrophysiology of the Mauthner cell: basic properties, synaptic mechanisms and associated networks, in: D.S. Faber, H. Korn (Eds.), *Neurobiology of the Mauthner Cell*, Raven, New York, 1978, pp. 47–131.
- [76] A. Feder, E.J. Nestler, D. S. Charney, Psychobiology and molecular genetics of resilience, *Nat. Rev. Neurosci.* 10 (2009) 446–457.
- [77] D.E. Feldker, M.C. Morsink, A.H. Veenema, N.A. Datson, V. Proutski, D. Lathouwers, E.R. de Kloet, E. Vreugdenhil, The effect of chronic exposure to highly aggressive mice on hippocampal gene expression of non-aggressive subordinates, *Brain Res.* 1089 (2006) 10–20.
- [78] Z. Feng, W. Li, A. Ward, B.J. Piggott, E.R. Larkspur, P.W. Sternberg, X.Z. Xu, A. C. elegans model of nicotine-dependent behavior: regulation by TRP-family channels, *Cell* 127 (2006) 621–633.
- [79] J.N. Ferguson, L.J. Young, T.R. Insel, The neuroendocrine basis of social recognition, *Front. Neuroendocrinol.* 23 (2002) 200–224.
- [80] R.D. Fernald, Casting a genetic light on the evolution of eyes, *Science* 313 (2006) 1914–1918.
- [81] C.F. Ferris, Vasopressin/oxytocin and aggression, *Novartis Found. Symp.* 268 (2005) 190–198.
- [82] C.F. Ferris, Y. Delville, Vasopressin and serotonin interactions in the control of agonistic behavior, *Psychoneuroendocrinology* 19 (1994) 593–601.
- [83] C.M. Foran, A.H. Bass, Preoptic GnRH and AVT: axes for sexual plasticity in teleost fish, *Gen. Comp. Endocrinol.* 116 (1999) 141–152.
- [84] P.M. Forlano, A.H. Bass, Neural and hormonal mechanisms of reproductive-related arousal in fishes, *Horm. Behav.* (2010), doi:10.1016/j.yhbeh.2010.10.00.
- [85] D.D. Francis, L.J. Young, M.J. Meaney, T.R. Insel, Naturally occurring differences in maternal care are associated with the expression of oxytocin and vasopressin (V1a) receptors: gender differences, *J. Neuroendocrinol.* 14 (2002) 349–353.
- [86] T.M. Freeberg, Assortative mating in captive cowbirds is predicted by social experience, *Anim. Behav.* 52 (1996) 1129–1142.
- [87] W.O. Friesen, W.B. Kristan, Leech locomotion: swimming, crawling, and decisions, *Curr. Opin. Neurobiol.* 17 (2007) 704–711.
- [88] C.A. Frye, The role of neurosteroids and non-genomic effects of progestins and androgens in mediating sexual receptivity of rodents, *Brain Res. Brain Res. Rev.* 37 (2001) 201–222.
- [89] M.J. Fuxjager, R.M. Forbes-Lorman, D.J. Coss, C.J. Auger, A.P. Auger, C.A. Marler, Winning territorial disputes selectively enhances androgen sensitivity in neural pathways related to motivation and social aggression, *Proc. Natl. Acad. Sci. USA* 107 (2010) 12393–12398.
- [90] H.C. Gerhardt, F. Huber, *Acoustic Communication in Insects and Anurans*, University of Chicago Press, Chicago, 2002.
- [91] D.L. Glanzman, F.B. Krasne, Serotonin and octopamine have opposite modulatory effects on the crayfish's lateral giant escape reaction, *J. Neurosci.* 3 (1983) 2263–2269.
- [92] E.D. Gleason, M.J. Fuxjager, T.O. Oyegbile, C.A. Marler, Testosterone release and social context: when it occurs and why, *Front. Neuroendocrinol.* 30 (2009) 460–469.
- [93] J. Godwin, Neuroendocrinology of sexual plasticity in teleost fishes, *Front. Neuroendocrinol.* 31 (2010) 203–216.
- [94] J.L. Goodson, The vertebrate social behavior network: evolutionary themes and variations, *Horm. Behav.* 48 (2005) 11–22.
- [95] J.L. Goodson, Nonapeptides and the evolutionary patterning of sociality, *Prog. Brain Res.* 170 (2008) 3–15.
- [96] J.L. Goodson, A.H. Bass, Vocal-acoustic circuitry and descending vocal pathways in teleost fish: convergence with terrestrial vertebrates reveals conserved traits, *J. Comp. Neurol.* 448 (2002) 298–322.
- [97] J.L. Goodson, D. Kabelik, Dynamic limbic networks and social diversity in vertebrates: from neural context to neuromodulatory patterning, *Front. Neuroendocrinol.* 30 (2009) 429–441.
- [98] J.L. Goodson, R.R. Thompson, Nonapeptide mechanisms of social cognition, behavior and species-specific social systems, *Curr. Opin. Neurobiol.* 20 (2010) 1–11.
- [99] J.L. Goodson, Y. Wang, Valence-sensitive neurons exhibit divergent functional profiles in gregarious and asocial species, *Proc. Natl. Acad. Sci. USA* 103 (2006) 17013–17017.
- [100] N.M. Gordon, H.C. Gerhardt, Hormonal modulation of phonotaxis and advertisement-call preferences in the gray treefrog (*Hyla versicolor*), *Horm. Behav.* 55 (2009) 121–127.
- [101] T. Gotow, A. Triller, H. Korn, Differential distribution of serotonergic inputs on the goldfish mauthner cell, *J. Comp. Neurol.* 292 (1990) 255–268.
- [102] R. Grashow, T. Brookings, E. Marder, Reliable neuromodulation from circuits with variable underlying structure, *Proc. Natl. Acad. Sci. USA* 106 (2009) 11742–11746.
- [103] R.J. Greenspan, J.F. Ferveur, Courtship in *Drosophila*, *Annu. Rev. Genet.* 34 (2000) 205–232.
- [104] C. Gregg, J. Zhang, B. Weissbourd, S. Luo, G.P. Schroth, D. Haig, C. Dulac, High-resolution analysis of parent-of-origin allelic expression in the mouse brain, *Science* 329 (2010) 643–648.
- [105] A.S. Griffin, Social learning about predators: a review and prospectus, *Learn. Behav.* 32 (2004) 131–140.
- [106] C.M. Grozinger, N.M. Sharabash, C.W. Whitfield, G.E. Robinson, Pheromone-mediated gene expression in the honey bee brain, *Proc. Natl. Acad. Sci. USA* 100 (Suppl. 2) (2003) 14519–14525.
- [107] Z.T. Halpin, Individual odors among mammals: origins and functions, *Adv. Stud. Behav.* 16 (1986) 39–70.
- [108] E. Hara, L. Kubikova, N.A. Hessler, E.D. Jarvis, Role of the midbrain dopaminergic system in modulation of vocal brain activation by social context, *Eur. J. Neurosci.* 25 (2007) 3406–3416.
- [109] S.D. Healy, C. Rowe, A critique of comparative studies of brain size, *Proc. Biol. Sci.* 274 (2007) 453–464.
- [110] S.A. Heimovics, L.V. Riters, Breeding-context-dependent relationships between song and cFOS labeling within social behavior brain regions in male European starlings (*Sturnus vulgaris*), *Horm. Behav.* 50 (2006) 726–735.
- [111] S.A. Heimovics, L.V. Riters, Evidence that dopamine within motivation and song control brain regions regulates birdsong context-dependently, *Physiol. Behav.* 95 (2008) 258–266.

- [112] M. Hemmat, P. Eggleston, Competitive interactions in *Drosophila melanogaster*: recurrent selection for aggression and response, *Heredity* 60 (1988) 129–137.
- [113] J. Herbert, Peptides in the limbic system: neurochemical codes for coordinated adaptive responses to behavioural and physiological demand, *Prog. Neurobiol.* 41 (1993) 723–791.
- [114] M. Hibert, J. Hoflack, S. Trumpp-Kallmeyer, B. Mouillac, B. Chini, E. Mahea, N. Cotte, S. Jard, M. Manning, C. Barberis, Functional architecture of vasopressin/oxytocin receptors, *J. Recep. Signal Transduct. Res.* 19 (1999) 589–596.
- [115] K. Hirschenhauser, R.F. Oliveira, Social modulation of androgens in male vertebrates: meta-analyses of the “challenge hypothesis”, *Anim. Behav.* 71 (2006) 265–277.
- [116] M.A. Hixon, Territory area as a determinant of mating systems, *Am. Zool.* 27 (1987) 229–249.
- [117] A.A. Hoffmann, A laboratory study of male territoriality in the sibling species *Drosophila melanogaster* and *D. simulans*, *Anim. Behav.* 35 (1987) 807–818.
- [118] A.A. Hoffmann, Heritable variation for territorial success in two *Drosophila melanogaster* populations, *Anim. Behav.* 36 (1988) 1180–1189.
- [119] A.A. Hoffmann, Z. Cacoyianni, Selection for territoriality in *Drosophila melanogaster*: correlated responses in mating success and other fitness components, *Anim. Behav.* 38 (1989) 23–34.
- [120] H.A. Hofmann, Functional genomics of neural and behavioral plasticity, *J. Neurobiol.* 54 (2003) 272–282.
- [121] H.A. Hofmann, Early developmental patterning sets the stage for brain evolution, *PNAS USA* 107 (2010) 9919–9920.
- [122] K.L. Hoke, S.S. Burmeister, R.D. Fernald, A.S. Rand, M.J. Ryan, W. Wilczynski, Functional mapping of the auditory midbrain during mate call reception, *J. Neurosci.* 24 (2004) 11264–11272.
- [123] K.L. Hoke, M.J. Ryan, W. Wilczynski, Social cues shift functional connectivity in the hypothalamus, *Proc. Natl. Acad. Sci. USA* 102 (2005) 10712–10717.
- [124] K.L. Hoke, M.J. Ryan, W. Wilczynski, Integration of sensory and motor processing underlying social behaviour in túngara frogs, *Proc. Biol. Sci.* 274 (2007) 641–649.
- [125] K.L. Hoke, M.J. Ryan, W. Wilczynski, Candidate neural locus for sex differences in reproductive decisions, *Biol. Lett.* 4 (2008) 518–521.
- [126] E. Hollander, J. Rosen, Impulsivity, *J. Psychopharmacol.* 14 (2000) S39–S44.
- [127] Y.C. Huang, N.A. Hessler, Social modulation during songbird courtship potentiates midbrain dopaminergic neurons, *PLoS One* 3 (2008) e3281.
- [128] M. Huizinga, C.K. Ghalambor, D.N. Reznick, The genetic and environmental basis of adaptive differences in shoaling behaviour among populations of *Trinidadian guppies*, *Poecilia reticulata*, *J. Evol. Biol.* 22 (2009) 1860–1866.
- [129] E.M. Hull, J.M. Dominguez, Getting his act together: roles of glutamate, nitric oxide, and dopamine in the medial preoptic area, *Brain Res.* 1126 (2006) 66–75.
- [130] E.M. Hull, J.M. Dominguez, Sexual behavior in male rodents, *Horm. Behav.* 52 (2007) 45–55.
- [131] T.R. Insel, T.J. Hulihan, A gender-specific mechanism for pair bonding: oxytocin and partner preference formation in monogamous voles, *Behav. Neurosci.* 109 (1995) 782–789.
- [132] T.R. Insel, J.T. Winslow, Z. Wang, L.J. Young, Oxytocin, vasopressin, and the neuroendocrine basis of pair bond formation, *Adv. Exp. Med. Biol.* 449 (1998) 215–224.
- [133] T.R. Insel, J.T. Winslow, J.R. Williams, N. Hastings, L.E. Shapiro, C.S. Carter, The role of neurohypophysial peptides in the central mediation of complex social processes – evidence from comparative studies, *Regul. Pept.* 45 (1993) 127–131.
- [134] T.R. Insel, L.J. Young, Neuropeptides and the evolution of social behavior, *Curr. Opin. Neurobiol.* 10 (2000) 784–789.
- [135] W.J. Jenkins, J.B. Becker, Role of the striatum and nucleus accumbens in paced copulatory behavior in the female rat, *Behav. Brain Res.* 121 (2001) 119–128.
- [136] T.S. Jessop, N.N. FitzSimmons, C.J. Limpus, J.M. Whittier, Interactions between behavior and plasma steroids within the scramble mating system of the promiscuous green turtle, *Chelonia mydas*, *Horm. Behav.* 36 (1999) 86–97.
- [137] J. Jing, R. Gillette, Directional avoidance turns encoded by single interneurons and sustained by multifunctional serotonergic cells, *J. Neurosci.* 23 (2003) 3039–3051.
- [138] J. Jing, R. Gillette, K.R. Weiss, Evolving concepts of arousal: insights from simple model systems, *Rev. Neurosci.* 20 (2009) 405–427.
- [139] R.E. Johnston, Chemical communication in rodents: from pheromones to individual recognition, *J. Mammal.* 84 (2003) 1141–1162.
- [140] L. Kappeler, M.J. Meaney, Epigenetics and parental effects, *Bioessays* 32 (2010) 818–827.
- [141] P.S. Katz, R.M. Harris-Warrick, The evolution of neuronal circuits underlying species-specific behavior, *Curr. Opin. Neurobiol.* 9 (1999) 628–633.
- [142] M. Kavaliers, E. Choleris, D.W. Pfaff, Recognition and avoidance of the odors of parasitized conspecifics and predators: differential genomic correlates, *Neurosci. Biobehav. Rev.* 29 (2005) 1347–1359.
- [143] M. Kavaliers, D.D. Colwell, E. Choleris, A. Agmo, L.J. Muglia, S. Ogawa, D.W. Pfaff, Impaired discrimination of and aversion to parasitized male odors by female oxytocin knockout mice, *Genes Brain Behav.* 2 (2003) 220–230.
- [144] E.B. Keverne, J.P. Curley, Epigenetics, brain evolution and behaviour, *Front. Neuroendocrinol.* 29 (2008) 398–412.
- [145] N.M. Kime, T.K. Whitney, M.J. Ryan, A.S. Rand, C.A. Marler, Treatment with arginine vasotocin alters mating calls and decreases call attractiveness in male túngara frogs, *Gen. Comp. Endocrinol.* 165 (2010) 221–228.
- [146] K.S. Kindt, K.B. Quast, A.C. Giles, S. De, D. Hendrey, I. Nicastro, C.H. Rankin, W.R. Schafer, Dopamine mediates context-dependent modulation of sensory plasticity in *C. elegans*, *Neuron* 55 (2007) 662–676.
- [147] M. Kirkpatrick, L.A. Dugatkin, Sexual selection and the evolutionary effects of mate copying, *Behav. Ecol. Sociobiol.* 34 (1994) 443–449.
- [148] M. Klukowski, C.E. Nelson, The challenge hypothesis and seasonal changes in aggression and steroids in male northern fence lizards (*Sceloporus undulatus hyacinthinus*), *Horm. Behav.* 33 (1998) 197–204.
- [149] G.F. Koob, E.J. Nestler, The neurobiology of drug addiction, *J. Neuropsych. Clin. Neurosci.* 9 (1997) 482–497.
- [150] R. Kou, S.Y. Chou, Z.Y. Huang, R.L. Yang, Juvenile hormone levels are increased in winners of cockroach fights, *Horm. Behav.* 54 (2008) 521–527.
- [151] M.J. Krashes, S. DasGupta, A. Vreede, B. White, J.D. Armstrong, S. Waddell, A neural circuit mechanism integrating motivational state with memory expression in *Drosophila*, *Cell* 139 (2009) 416–427.
- [152] J.R. Krebs, N.B. Davies (Eds.), *An Introduction to Behavioral Ecology*, Blackwell, Oxford/Boston, 1993.
- [153] J.R. Krebs, N.B. Davies (Eds.), *Behavioural Ecology: An Evolutionary Approach*, Blackwell, Oxford/Malden, MA, 1997.
- [154] V. Krishnan, M.H. Han, D.L. Graham, O. Berton, W. Renthal, S.J. Russo, Q. Laplant, A. Graham, M. Lutter, D.C. Lagace, S. Ghose, R. Reister, P. Tannous, T.A. Green, R.L. Neve, S. Chakravarty, A. Kumar, A.J. Eisch, D.W. Self, F.S. Lee, C.A. Tamminga, D.C. Cooper, H.K. Gershenfeld, E.J. Nestler, Molecular adaptations underlying susceptibility and resistance to social defeat in brain reward regions, *Cell* 131 (2007) 232–234.
- [155] W.B. Kristan Jr, R.L. Calabrese, W.O. Friesen, Neuronal control of leech behavior, *Prog. Neurobiol.* 76 (2005) 279–327.
- [156] A. Krogh, The progress of physiology, *Science* 70 (1929) 200–204.
- [157] L. Kubikova, L. Kostál, Dopaminergic system in birdsong learning and maintenance, *J. Chem. Neuroanat.* 39 (2010) 112–123.
- [158] A. Kulma, J. Szopa, Catecholamines are active compounds in plants, *Plant Sci.* 172 (2007) 433–440.
- [159] K.N. Laland, On the evolutionary consequences of sexual imprinting, *Evolution* 48 (1994) 477–489.
- [160] K.N. Laland, K. Williams, Shoaling generates social learning of foraging information in guppies, *Anim. Behav.* 53 (1997) 1161–1169.
- [161] K.N. Laland, K. Williams, Social transmission of maladaptive information in the guppy, *Behav. Ecol.* 9 (1998) 493–499.
- [162] B. Lardner, Plasticity or fixed adaptive traits? Strategies for predation avoidance in *Rana arvalis* tadpoles, *Oecologia* 117 (1998) 119–126.
- [163] M.K. Lawnczak, D.J. Begun, A genome-wide analysis of courting and mating responses in *Drosophila melanogaster* females, *Genome* 47 (2004) 900–910.
- [164] D.S. Lehrman, Interaction between internal and external environments in the regulation of the reproductive cycle of the ring dove, in: F.A. Beach (Ed.), *Sex and Behavior*, Wiley, New York, 1965, pp. 355–380.
- [165] G. Leng, S.L. Meddle, A.J. Douglas, Oxytocin and the maternal brain, *Curr. Opin. Pharmacol.* 8 (2008) 731–734.
- [166] M.M. Lim, L.J. Young, Neuropeptidergic regulation of affiliative behavior and social bonding in animals, *Horm. Behav.* 50 (2006) 506–517.
- [167] J. Lipton, G. Kleemann, R. Ghosh, R. Lints, S.W. Emmons, Mate searching in *Caenorhabditis elegans*: a genetic model for sex drive in a simple invertebrate, *J. Neurosci.* 24 (2004) 7427–7434.
- [168] H.E. Machado, A. Pollen, H.A. Hofmann, S.C.P. Renn, Improved comparative profiling of gene expression through interspecific aCGH: a review and case study in African Cichlid Fishes, *Integr. Comp. Biol.* 49 (2009) 644–659.
- [169] R. Maldonado, The neurobiology of addiction, *J. Neural. Transm. Suppl.* 66 (2003) 1–14.
- [170] S. Mani, Ligand-independent activation of progesterin receptors in sexual receptivity, *Horm. Behav.* 40 (2001) 183–190.
- [171] S.K. Mani, W. Portillo, A. Reyna, Steroid hormone action in the brain: cross-talk between signalling pathways, *J. Neuroendocrinol.* 21 (2009) 243–247.
- [172] E. Marder, J.M. Goaillard, Variability, compensation and homeostasis in neuron and network function, *Nat. Rev. Neurosci.* 7 (2006) 563–574.
- [173] K.P. Maruska, R.D. Fernald, Behavioral and physiological plasticity: rapid changes during social ascent in an African cichlid fish, *Horm. Behav.* 58 (2010) 230–240.
- [174] K.P. Maruska, R.D. Fernald, Plasticity of the reproductive axis caused by social status change in an African cichlid fish: II. Testicular gene expression and spermatogenesis, *Endocrinology* (2010), doi:10.1210/en.2010-087.
- [175] M.M. McCarthy, J.G. Pfaus, Steroid modulation of neurotransmitter function to alter female reproductive behavior, *Trends Endocrinol. Metab.* 7 (1996) 327–333.
- [176] B.S. McEwen, Non-genomic and genomic effects of steroids on neural activity, *Trends Pharmacol. Sci.* 12 (1991) 141–147.
- [177] K.L. McGary, T.J. Park, J.O. Woods, H.J. Cha, J.B. Wallingford, E.M. Marcotte, Systematic discovery of nonobvious human disease models through orthologous phenotypes, *Proc. Natl. Acad. Sci. USA* 107 (2010) 6544–6549.
- [178] L.A. McGraw, L.J. Young, The prairie vole: an emerging model organism for understanding the social brain, *Trends Neurosci.* 33 (2010) 103–109.
- [179] K.A. Mescie, J.T. Pierce-Shimomura, Shared strategies for behavioral switching: understanding how locomotor patterns are turned on and off, *Front. Behav. Neurosci.* 4 (2010) pii: 49.
- [180] J. Mirenovic, W. Schultz, Preferential activation of midbrain dopamine neurons by appetitive rather than aversive stimuli, *Nature* 379 (1996) 449–451.

- [181] A.P. Møller, J.T. Nielsen, L.Z. Garamszegi, Song post exposure, song features, and predation risk, *Behav. Ecol.* 17 (2006) 155–163.
- [182] F.L. Moore, C.A. Lowry, J.D. Rose, Steroid-neuropeptide interactions that control reproductive behaviors in an amphibian, *Psychoneuroendocrinology* 19 (1994) 581–592.
- [183] M.C. Moore, Hormonal response of free-living male white-crowned sparrows to experimental manipulation of female sexual behavior, *Horm. Behav.* 16 (1982) 323–329.
- [184] M.C. Moore, Circulating steroid hormones during rapid aggressive responses of territorial male mountain spiny lizards, *Sceloporus jarrovi*, *Horm. Behav.* 21 (1987) 511–521.
- [185] M.C. Moore, R. Kranz, Evidence for androgen independence of male mounting behavior in white-crowned sparrows (*Zonotrichia leucophrys gambelii*), *Horm. Behav.* 17 (1983) 414–423.
- [186] J.I. Morrell, D.W. Pfaff, Immunocytochemistry of steroid hormone receiving cells in the central nervous system, *Methods Enzymol.* 103 (1983) 639–662.
- [187] S.E. Morrison, C.D. Salzman, Re-valuing the amygdala, *Curr. Opin. Neurobiol.* 20 (2010) 221–230.
- [188] M. Mukai, K. Replogle, J. Drnevich, G. Wang, D. Wacker, M. Band, D.F. Clayton, J.C. Wingfield, Seasonal differences of gene expression profiles in song sparrow (*Melospiza melodia*) hypothalamus in relation to territorial aggression, *PLoS One* 4 (2009) e8182.
- [189] B.D. Neff, R. Knapp, Paternity, parental behavior and circulating steroid hormone concentrations in nest-tending male bluegill, *Horm. Behav.* 56 (2009) 239–245.
- [190] M.E. Nelson, M.A. MacIver, Sensory acquisition in active sensing systems, *J. Comp. Physiol. A. Neuroethol. Sens. Neural Behav. Physiol.* 192 (2006) 573–586.
- [191] R.J. Nelson, B.C. Trainor, Neural mechanisms of aggression, *Nat. Rev. Neurosci.* 8 (2007) 536–546.
- [192] E.J. Nestler, Genes and addiction, *Nat. Genet.* 26 (2000) 277–281.
- [193] E.J. Nestler, Molecular basis of long-term plasticity underlying addiction, *Nat. Rev. Neurosci.* 2 (2001) 119–128.
- [194] S.W. Newman, The medial extended amygdala in male reproductive behavior: a node in the mammalian social behavior network, *Ann. NY Acad. Sci.* 877 (1999) 242–257.
- [195] J. Ninkovic, L. Bally-Cuif, The zebrafish as a model system for assessing the reinforcing properties of drugs of abuse, *Methods* 39 (2006) 262–274.
- [196] Y. Niv, D. Joel, P. Dayan, A normative perspective on motivation, *Trends Cogn. Sci.* 10 (2006) 375–381.
- [197] R.G. Northcutt, Evolution of the telencephalon in nonmammals, *Annu. Rev. Neurosci.* 4 (1981) 301–350.
- [198] R.G. Northcutt, Forebrain evolution in bony fishes, *Brain Res. Bull.* 75 (2008) 191–205.
- [199] L.A. O'Connell, H.A. Hofmann, The vertebrate mesolimbic reward system and social behavior network: a comparative analysis, *J. Comp. Neurol.*, in press.
- [200] M.E. O'Connell, C. Reboulleau, H.H. Feder, R. Silver, Social interactions and androgen levels in birds: I. Female characteristics associated with increased plasma androgen levels in the male ring dove (*Streptopelia risoria*), *Gen. Comp. Endocrinol.* 44 (1981) 454–463.
- [201] M.C. Oldham, D.H. Geschwind, Comparative genomics: grasping human transcriptome evolution: what does it all mean?, *Heredity* 96 (2006) 339–340.
- [202] R.F. Oliveira, M. Lopes, L.A. Carneiro, A.V. Canário, Watching fights raises fish hormone levels, *Nature* 409 (2001) 475.
- [203] B.W. O'Malley, M.J. Tsai, Molecular pathways of steroid receptor action, *Biol. Reprod.* 46 (1992) 163–167.
- [204] T.O. Oyegbile, C.A. Marler, Winning fights elevates testosterone levels in California mice and enhances future ability to win fights, *Horm. Behav.* 48 (2005) 259–267.
- [205] J.B. Panksepp, R. Huber, Chronic alterations in serotonin function: dynamic neurochemical properties in agonistic behavior of the crayfish, *Orconectes rusticus*, *J. Neurobiol.* 50 (2002) 276–290.
- [206] R.G. Paredes, Evaluating the neurobiology of sexual reward, *ILAR* 50 (2009) 15–27.
- [207] M.N. Pertseva, A.O. Shpakov, The prokaryotic origin and evolution of eukaryotic chemosignaling systems, *Neurosci. Behav. Physiol.* 39 (2009) 793–804.
- [208] J. Peter, H. Burbach, R.A. Adan, S.J. Lolait, F.W. van Leeuwen, E. Mezey, M. Palkovits, C. Barberis, Molecular neurobiology and pharmacology of the vasopressin/oxytocin receptor family, *Cell. Mol. Neurobiol.* 15 (1995) 573–595.
- [209] S.M. Phelps, P. Campbell, D.J. Zheng, A.G. Ophir, Beating the boojum: comparative approaches to the neurobiology of social behavior, *Neuropharmacology* 58 (2010) 17–28.
- [210] R.C. Pierce, P.W. Kalivas, Amphetamine produces sensitized increases in locomotion and extracellular dopamine preferentially in the nucleus accumbens shell of rats administered repeated cocaine, *J. Pharmacol. Exp. Ther.* 275 (1995) 1019–1029.
- [211] J.T. Pierce-Shimomura, B.L. Chen, J.J. Mun, R. Ho, R. Sarkis, S.L. McIntire, Genetic analysis of crawling and swimming locomotor patterns in *C. elegans*, *Proc. Natl. Acad. Sci. USA* 105 (2008) 20982–20987.
- [212] R.P. Pipepek, Genetic mechanisms underlying male sex determination in mammals, *J. Appl. Genet.* 50 (2009) 347–360.
- [213] A.A. Pollen, H.A. Hofmann, Beyond neuroanatomy: novel approaches to studying brain evolution, *Brain Behav. Evol.* 72 (2008) 145–158.
- [214] C.P. Ponting, P.L. Oliver, W. Reik, Evolution and functions of long noncoding RNAs, *Cell* 136 (2009) 629–641.
- [215] N.K. Popova, From gene to aggressive behavior: the role of brain serotonin, *Neurosci. Behav. Physiol.* 38 (2008) 471–475.
- [216] S.W. Porges, The polyvagal theory: phylogenetic substrates of a social nervous system, *Int. J. Psychophysiol.* 42 (2001) 123–146.
- [217] H.P. Possingham, The distribution and abundance of resources encountered by a forager, *Am. Nat.* 133 (1989) 42–60.
- [218] B. Prud'homme, N. Gompel, S.B. Carroll, Emerging principles of regulatory evolution, *Proc. Natl. Acad. Sci. USA* 104 (Suppl. 1) (2007) 8605–8612.
- [219] B. Prud'homme, N. Gompel, A. Rokas, V.A. Kassner, T.M. Williams, S.D. Yeh, J.R. True, S.B. Carroll, Repeated morphological evolution through cis-regulatory changes in a pleiotropic gene, *Nature* 440 (2006) 1050–1053.
- [220] S. Pruett-Jones, Independent versus nonindependent mate choice: do females copy each other?, *Am. Nat.* 140 (1992) 1000–1009.
- [221] R. Pusch, G. von der Emde, M. Hollmann, J. Babelo, S. Nöbel, K. Grant, J. Engelmann, Active sensing in a mormyrid fish: electric images and peripheral modifications of the signal carrier give evidence of dual foveation, *J. Exp. Biol.* 211 (2008) 921–934.
- [222] L. Remage-Healey, A.H. Bass, A rapid neuromodulatory role for steroid hormones in the control of reproductive behavior, *Brain Res.* 1126 (2006) 27–35.
- [223] S.C. Renn, N. Aubin-Horth, H.A. Hofmann, Fish and chips: functional genomics of social plasticity in an African cichlid fish, *J. Exp. Biol.* 211 (2008) 3041–3056.
- [224] T. Rhen, A. Schroeder, Molecular mechanisms of sex determination in reptiles, *Sex Dev.* 4 (2010) 16–28.
- [225] T. Riemensperger, T. Völler, P. Stock, E. Buchner, A. Fiala, Punishment prediction by dopaminergic neurons in *Drosophila*, *Curr. Biol.* 15 (2005) 1953–1960.
- [226] P.Y. Risold, L.W. Swanson, Connections of the rat lateral septal complex, *Brain Res. Brain Res. Rev.* 24 (1997) 115–195.
- [227] E.F. Rissman, S.R. Wersinger, H.N. Fugger, T.C. Foster, Sex with knockout models: behavioral studies of estrogen receptor alpha, *Brain Res.* 835 (1999) 80–90.
- [228] L.V. Riters, S.J. Alger, Neuroanatomical evidence for indirect connections between the medial preoptic nucleus and the song control system: possible neural substrates for sexually motivated song, *Cell Tissue Res.* 316 (2004) 35–44.
- [229] G.E. Robinson, R.D. Fernald, D.F. Clayton, Genes and social behavior, *Science* 322 (2008) 896–900.
- [230] G.E. Robinson, C.M. Grozinger, C.W. Whitfield, Sociogenomics: social life in molecular terms, *Nat. Rev. Genet.* 6 (2005) 257–270.
- [231] K.D. Roeder, An experimental analysis of the sexual behavior of the praying mantis (*Mantis religiosa* L.), *Biol. Bull.* 69 (1935) 203–220.
- [232] D.R. Rubinow, P.J. Schmidt, C.A. Roca, Estrogen-serotonin interactions: implications for affective regulation, *Biol. Psychiat.* 44 (1998) 839–850.
- [233] M.G. Ruscio, E. Adkins-Regan, Immediate early gene expression associated with induction of brooding behavior in Japanese quail, *Horm. Behav.* 46 (2004) 19–29.
- [234] M.J. Ryan, F.H. Fox, W. Wilczynski, A.S. Rand, Sexual selection for sensory exploitation in the frog *Physalaemus pustulosus*, *Nature* 343 (1990) 66–67.
- [235] E. Ryding, M. Lindström, L. Träskman-Bendz, The role of dopamine and serotonin in suicidal behaviour and aggression, *Prog. Brain Res.* 172 (2008) 307–315.
- [236] G. Saccone, A. Pane, L.C. Polito, Sex determination in flies, fruitflies and butterflies, *Genetica* 116 (2002) 15–23.
- [237] J.T. Sakata, P. Coomber, F. Gonzalez-Lima, D. Crews, Functional connectivity among limbic brain areas: differential effects of incubation temperature and gonadal sex in the leopard gecko, *Eublepharis macularius*, *Brain Behav. Evol.* 55 (2000) 139–151.
- [238] J.T. Sakata, D. Crews, Developmental sculpting of social phenotype and plasticity, *Neurosci. Biobehav. Rev.* 28 (2004) 95–112.
- [239] S.J. Salek, C.V. Sullivan, J. Godwin, Arginine vasotocin effects on courtship behavior in male white perch (*Morone americana*), *Behav. Brain Res.* 133 (2002) 177–183.
- [240] F. Sandrelli, R. Costa, C.P. Kyriacou, E. Rosato, Comparative analysis of circadian clock genes in insects, *Insect Mol. Biol.* 17 (2008) 447–463.
- [241] W.R. Schafer, Addiction research in a simple animal model: the nematode *Caenorhabditis elegans*, *Neuropharmacology* 47 (2004) 123–131.
- [242] G.B. Schaller, J.T. Emlen Jr., The development of visual discrimination patterns in the courting reactions of nestling grackles, *Auk* 78 (1961) 125–137.
- [243] T.C. Schneirla, Aspects of stimulation and organization in approach/withdrawal processes underlying vertebrate behavioral development, in: D.S. Lehrman, R. Hind, E. Shaw (Eds.), *Advances in the Study of Behavior*, Academic Press, New York, 1965, pp. 1–71.
- [244] W. Schultz, Predictive reward signal of dopamine neurons, *J. Neurophysiol.* 80 (1998) 1–27.
- [245] W. Schultz, Getting formal with dopamine and reward, *Neuron* 36 (2002) 241–263.
- [246] W. Schultz, P. Apicella, T. Ljungberg, Responses of monkey dopamine neurons to reward and conditioned stimuli during successive steps of learning a delayed response task, *J. Neurosci.* 13 (1993) 900–913.
- [247] T. Schwander, N. Lo, M. Beekman, B.P. Oldroyd, L. Keller, Nature versus nurture in social insect caste differentiation, *Trends Ecol. Evol.* 25 (2010) 275–282.

- [248] M.P. Scott, Resource defense and juvenile hormone: the "challenge hypothesis" extended to insects, *Horm. Behav.* 49 (2006) 276–281.
- [249] M.F. Scriba, W. Goymann, European robins (*Erithacus rubecula*) lack an increase in testosterone during simulated territorial intrusions, *J. Ornithol.* 151 (2010) 607–614.
- [250] W.A. Searcy, M.D. Beecher, Song as an aggressive signal in songbirds, *Anim. Behav.* 78 (2009) 1281–1292.
- [251] K. Semsar, F.L. Kandel, J. Godwin, Manipulations of the AVT system shift social status and related courtship and aggressive behavior in the bluehead wrasse, *Horm. Behav.* 40 (2001) 21–31.
- [252] C.M. Shoemaker, D. Crews, Analyzing the coordinated gene network underlying temperature-dependent sex determination in reptiles, *Semin. Cell Dev. Biol.* 20 (2009) 293–303.
- [253] K. Shoji, O. Hiroshi, T. Fumio, Olfactory responses of several species of teleost to F-prostaglandins, *Comp. Biochem. Physiol. A* 107 (1994) 463–467.
- [254] N. Shubin, C. Tabin, S. Carroll, Deep homology and the origins of evolutionary novelty, *Nature* 457 (2009) 818–823.
- [255] R.B. Simerly, C. Chang, M. Muramatsu, L.W. Swanson, Distribution of androgen and estrogen receptor mRNA-containing cells in the rat brain: an in situ hybridization study, *J. Comp. Neurol.* 294 (1990) 76–95.
- [256] P. Simpson, S. Ayyar, Evolution of cis-regulatory sequences in *Drosophila*, *Adv. Genet.* 61 (2008) 67–106.
- [257] W.J. Smeets, O. Marín, A. González, Evolution of the basal ganglia: new perspectives through a comparative approach, *J. Anat.* 196 (2000) 501–517.
- [258] C.R. Smith, A.L. Toth, A.V. Suarez, G.E. Robinson, Genetic and genomic analyses of the division of labour in insect societies, *Nat. Rev. Genet.* 9 (2008) 735–748.
- [259] M.B. Sokolowski, *Drosophila*: genetics meets behaviour, *Nat. Rev. Genet.* 2 (2001) 879–890.
- [260] K.K. Soma, Testosterone and aggression: berthold, birds and beyond, *J. Neuroendocrinol.* 18 (2006) 543–551.
- [261] P.W. Sorensen, T.J. Hara, N.E. Stacey, F.W. Goetz, F prostaglandins function as potent olfactory stimulants that comprise the postovulatory female sex pheromone in goldfish, *Biol. Reprod.* 39 (1988) 1039–1050.
- [262] P.W. Sorensen, M. Pinillos, A.P. Scott, Sexually mature male goldfish release large quantities of androstenedione into the water where it functions as a pheromone, *Gen. Comp. Endocrinol.* 140 (2005) 164–175.
- [263] R. Spanagel, F. Weiss, The dopamine hypothesis of reward: past and current status, *Trends Neurosci.* 22 (1999) 521–527.
- [264] J.A. Stamps, Habitat selection by dispersers: integrating proximate and ultimate approaches, in: J. Clobert, E. Danchin, A.A. Dhondt, J.D. Nichols (Eds.), *Dispersal*, Oxford University Press, Oxford, 2001, pp. 230–242.
- [265] G.S. Stent, W.B. Kristan Jr., W.O. Friesen, C.A. Ort, M. Poon, R.L. Calabrese, Neuronal generation of the leech swimming movement, *Science* 200 (1978) 1348–1357.
- [266] D.W. Stephens, Decision ecology: foraging and the ecology of animal decision making, *Cogn. Affect. Behav. Neurosci.* 8 (2008) 475–484.
- [267] D.W. Stephens, J.S. Brown, R.C. Ydenberg (Eds.), *Foraging Behavior and Ecology*, Chicago University Press, Chicago, 2001.
- [268] S. Stern, T. Dror, E. Stolovicki, N. Brenner, E. Braun, Genome-wide transcriptional plasticity underlies cellular adaptation to novel challenge, *Mol. Syst. Biol.* 3 (2007) 106.
- [269] G.F. Striedter, The telencephalon of tetrapods in evolution, *Brain Behav. Evol.* 49 (1997) 179–213.
- [270] G.F. Striedter, *Principles of Brain Evolution*, Sinauer Associates, Sunderland, 2005.
- [271] G.F. Striedter, R.G. Northcutt, Biological hierarchies and the concept of homology, *Brain Behav. Evol.* 38 (1991) 177–189.
- [272] J.B. Sylvester, C.A. Rich, Y.H. Loh, M.J. van Staaden, G.J. Fraser, J.T. Streebman, Brain diversity evolves via differences in patterning, *Proc. Natl. Acad. Sci. USA* 107 (2010) 9718–9723.
- [273] L.K. Takahashi, B.R. Nakashimaa, H. Honga, K. Watanabe, The smell of danger: a behavioral and neural analysis of predator odor-induced fear, *Neurosci. Biobehav. Rev.* 29 (2005) 1157–1167.
- [274] M.J. Thomas, P.W. Kalivas, Y. Shaham, Neuroplasticity in the mesolimbic dopamine system and cocaine addiction, *Br. J. Pharmacol.* 154 (2008) 327–342.
- [275] R.R. Thompson, J.C. Walton, Peptide effects on social behavior: effects of vasotocin and isotocin on social approach behavior in male goldfish (*Carassius auratus*), *Behav. Neurosci.* 118 (2004) 620–626.
- [276] E.A. Tibbetts, Z.Y. Huang, The challenge hypothesis in an insect: juvenile hormone increases during reproductive conflict following queen loss in *Polistes* wasps, *Am. Nat.* 76 (2010) 123–130.
- [277] N. Tinbergen, On aims and methods in ethology, *Z. Tierpsychol.* 20 (1963) 410–433.
- [278] A. Todorov, Evaluating faces on trustworthiness: an extension of systems for recognition of emotions signaling approach/avoidance behaviors, *Ann. NY Acad. Sci.* 1124 (2008) 208–224.
- [279] M. Tops, S. Russo, M.A. Boksem, D.M. Tucker, Serotonin: modulator of a drive to withdraw, *Brain Cogn.* 71 (2009) 427–436.
- [280] A.L. Toth, G.E. Robinson, Evo-devo and the evolution of social behavior: brain gene expression analyses in social insects, *Cold Spring Harb. Symp. Quant. Biol.* 74 (2009) 419–426.
- [281] A.L. Toth, K. Varala, M.T. Henshaw, S.L. Rodriguez-Zas, M.E. Hudson, G.E. Robinson, Brain transcriptomic analysis in paper wasps identifies genes associated with behaviour across social insect lineages, *Proc. Biol. Sci.* 277 (2010) 2139–2148.
- [282] B.C. Trainor, H.H. Kyomen, C.A. Marler, Estrogenic encounters: how interactions between aromatase and the environment modulate aggression, *Front. Neuroendocrinol.* 27 (2006) 170–179.
- [283] J.R. True, S.B. Carroll, Gene co-option in physiological and morphological evolution, *Annu. Rev. Cell Dev. Biol.* 18 (2002) 53–80.
- [284] J.R. True, E.S. Haag, Developmental system drift and flexibility in evolutionary trajectories, *Evol. Dev.* 3 (2001) 109–119.
- [285] S. Unoki, Y. Matsumoto, M. Mizunami, Roles of octopaminergic and dopaminergic neurons in mediating reward and punishment signals in insect visual learning, *Eur. J. Neurosci.* 24 (2006) 2031–2038.
- [286] N. Vasudevan, D.W. Pfaff, Non-genomic actions of estrogens and their interaction with genomic actions in the brain, *Front. Neuroendocrinol.* 29 (2008) 238–257.
- [287] E. Verspooor, L. Stradmeyer, J.L. Nielsen, *The Atlantic salmon: Genetics, Conservation and Management*, Blackwell, Publishing, Oxford, 2007.
- [288] T.A. Villars, N. Hale, D. Chapnick, Prostaglandin-F2 alpha stimulates reproductive behavior of female paradise fish (*Macropodus opercularis*), *Horm. Behav.* 19 (1985) 21–35.
- [289] D.W. Wacker, A.J. Coverdill, C.M. Bauer, J.C. Wingfield, Male territorial aggression and androgen modulation in high latitude populations of the Sooty, *Passerella iliaca sinuosa*, and Red Fox Sparrow, *Passerella iliaca zaboria*, *J. Ornithol.* 151 (2010) 79–86.
- [290] S. Waddell, Dopamine reveals neural circuit mechanisms of fly memory, *Trends Neurosci.* 33 (2010) 457–464.
- [291] D. Wahlsten, Phenotypic and genetic relations between initial response to electric shock and rate of avoidance learning in mice, *Behav. Genet.* 2 (1972) 211–240.
- [292] D.M. Walker, A.C. Gore, Transgenerational neuroendocrine disruption of reproduction, *Nat. Rev. Endocrinol.* (2010), doi:10.1038/nrendo.2010.215.
- [293] I.C. Weaver, N. Cervoni, F.A. Champagne, A.C. D'Alessio, S. Sharma, J.R. Seckl, S. Dymov, M. Szyf, M.J. Meaney, Epigenetic programming by maternal behavior, *Nat. Neurosci.* 7 (2004) 847–854.
- [294] C.W. Whitfield, A.M. Cziko, G.E. Robinson, Gene expression profiles in the brain predict behavior in individual honey bees, *Science* 302 (2003) 296–299.
- [295] J.R. Wickens, C.S. Budd, B.I. Hyland, G.W. Arbuthnott, Striatal contributions to reward and decision making: making sense of regional variations in a reiterated processing matrix, *Ann. NY Acad. Sci.* 1104 (2007) 192–212.
- [296] E.A. Widder, Bioluminescence in the ocean: origins of biological, chemical, and ecological diversity, *Science* 328 (2010) 704–708.
- [297] A.S. Wilkins, *The Evolution of Developmental Pathways*, Sinauer Associates, Sunderland, 2002, pp. 165–168.
- [298] J.R. Williams, T.R. Insel, C.R. Harbaugh, C.S. Carter, Oxytocin administered centrally facilitates formation of a partner preference in female prairie voles (*Microtus ochrogaster*), *J. Neuroendocrinol.* 6 (1994) 247–250.
- [299] J.C. Wingfield, C. Breuner, J.D. Jacobs, S. Lynn, D. Maney, M. Ramenofsky, R. Richardson, Ecological bases of hormone-behavior interactions: the "emergency life history stage", *Am. Zool.* 38 (1998) 191–206.
- [300] J.C. Wingfield, R.E. Hegner, A.M. Dufty Jr, G.F. Ball, The "challenge hypothesis": theoretical implications for patterns of testosterone secretion, mating systems, and breeding strategies, *Am. Nat.* 136 (1990) 829–846.
- [301] J.T. Winslow, N. Hastings, C.S. Carter, C.R. Harbaugh, T. R. Insel, A role for central vasopressin in pair bonding in monogamous prairie voles, *Nature* 365 (1993) 545–548.
- [302] R.F. Wintle, H.H. Van Tol, Dopamine signaling in *Caenorhabditis elegans*-potential for Parkinsonism research, *Parkinsonism Relat. Disord.* 7 (2001) 177–183.
- [303] J.O. Wolff, J.A. Peterson, An offspring-defense hypothesis for territoriality in female mammals, *Ethol. Ecol. Evol.* 10 (1998) 227–239.
- [304] R.Y. Wong, H.A. Hofmann, Behavioral genomics: an organismal perspective, in: *Encyclopedia of Life Sciences (ELS)*, John Wiley & Sons Ltd., Chichester, 2010.
- [305] S.C. Woolley, J.T. Sakata, D. Crews, Tyrosine hydroxylase expression is affected by sexual vigor and social environment in male *Cnemidophorus inornatus*, *J. Comp. Neurol.* 476 (2004) 429–439.
- [306] S.C. Woolley, J.T. Sakata, D. Crews, Evolutionary insights into the regulation of courtship behavior in male amphibians and reptiles, *Physiol. Behav.* 83 (2004) 347–360.
- [307] T.D. Wyatt, *Pheromones and Animal Behaviour: Communication by Smell and Taste*, Cambridge University Press, Cambridge, 2003.
- [308] S.R. Yeh, R.A. Fricke, D.H. Edwards, The effect of social experience on serotonergic modulation of the escape circuit of crayfish, *Science* 271 (1996) 366–369.
- [309] K.A. Young, K.L. Gobrogge, Y. Liu, Z. Wang, The neurobiology of pair bonding: insights from a socially monogamous rodent, *Front. Neuroendocrinol.* (2010), doi:10.1016/j.yfrne.2010.07.006.
- [310] L.J. Young, L.J. Pitkow, J.N. Ferguson, Neuropeptides and social behavior: animal models relevant to autism, *Mol. Psychiat.* 2 (2002) S38–S39.
- [311] L.J. Young, Z. Wang, The neurobiology of pair bonding, *Nat. Neurosci.* 7 (2004) 1048–1054.

- [312] K. Zhang, J.Z. Guo, Y. Peng, W. Xi, A. Guo, Dopamine-mushroom body circuit regulates saliency-based decision-making in *Drosophila*, *Science* 316 (2007) 1901–1904.
- [313] T.Y. Zhang, M.J. Meaney, Epigenetics and the environmental regulation of the genome and its function, *Annu. Rev. Psychol.* 61 (2010) 439–466.
- [314] T.Y. Zhang, C. Parent, I. Weaver, M.J. Meaney, Maternal programming of individual differences in defensive responses in the rat, *Ann. NY Acad. Sci.* 1032 (2004) 85–103.