

Deliverables



Survey of Employee Engagement
Child Welfare/Social Services Version

\$ High Value

We understand your environment and keep the cost at a fraction of others. We offer a high level of service and methodology to fit your needs.

🔑 Turnkey

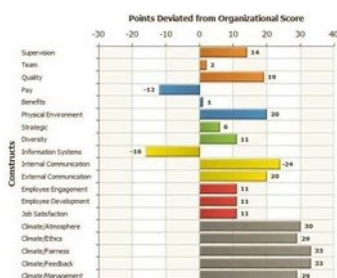
With turnkey administration and rapid turnaround, the survey process is easy. We work with you on the setup as well as administration and reporting results.

1 2 3 Customization

The survey is customizable. You can add additional content, customize the look, and create reports unique to your organization.

📊 Reporting

Reports provide analysis on the overall organization and for each breakout area. Types of reports include: executive summaries, data reports, aggregate scores in Excel, and dashboard views.



28. My work environment supports a balance between work and personal life.

Current Score: 4.09		2010 Score: 4.11		Current Benchmarks	
Standard Deviation: 0.92	2008 Score: 3.84	A/ Respondents: 3.80	Size Category: 4	3.76	
Number of Respondents: 374	2006 Score: 4.02	Mission: 3	3.75		

Response	Strongly Agree	Agree	Neutral	Disagree	Strongly Disagree	Applicable
Frequency	135	177	35	21	7	1
Percentage	36.36%	47.33%	9.38%	5.61%	1.87%	0.27%

📊 Benchmarking

Compare your employees' scores to multiple benchmark categories: mission, over time, size, breakouts, region, and workforce.



MISSION:
Child Welfare/
Social Services



OVER TIME



SIZE



BREAKOUTS



REGION



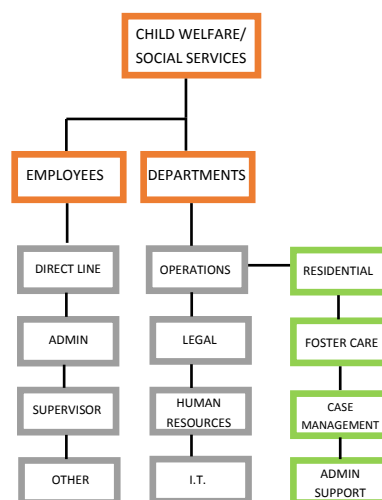
WORKFORCE



Breakouts

Breakouts are designed to solicit information about employees' roles within the organization. The data are a more detailed analysis isolating certain areas, functions, or other distinctions within the organization.

EXAMPLE



More Information

www.survey.utexas.edu/socialservices

orgexcel@utexas.edu

512-471-9831