



CENTRAL TEXAS

**Student***Futures*  
**PROJECT**

***Student Futures Project Update***

Greg Cumpton

*CREST*

September 24, 2012



# Outline

- I. Introduction
- II. Senior Survey
- III. Recent Publications
- IV. Upcoming Presentations
- V. Recent Research

# Project Partners



## Partnership of

- Ray Marshall Center, LBJ School, UT-Austin
- 11 Central Texas ISDs

## Project funders

- Greater Austin Chamber of Commerce
- TG
- Participating ISDs

# **School District Partners**



**By 1<sup>st</sup> year of participation:**

**2004-05**     **Austin ISD**  
**Del Valle ISD**  
**Pflugerville ISD**  
**Round Rock ISD\***

**2005-06**     **Leander ISD**  
**Manor ISD**

**2006-07**     **Eanes ISD**  
**San Marcos CISD**

**2007-08**     **Bastrop ISD**  
**Hays CISD**

**2010-11**     **Hutto ISD**

# Research Questions



- What are graduating seniors' **high school experiences, plans and preparation** for life after high school?
- What share of high school graduates **enroll in postsecondary education and/or become employed**, in the fall after graduation?
- What share of graduates are **enrolled and/or employed** over time?
- Which **factors** are **significantly associated** with positive **postsecondary education, employment and other outcomes**?
- How do these outcomes **change over time**?

# Current Data Sources



## Historical School Records

- Student demographics
- Courses taken
- Course grades

## Senior Surveys

- Family background/ influences
- High school experiences
- Preparation for life after high school

## Postsecondary Education Records

- National Student Clearinghouse
- Texas Education Research Center records (2010-11 pilot)

## Employment Records

- Texas Unemployment Insurance (UI) wage records



## **Senior Survey**

Thank you to everyone who had a hand in organizing the execution of the survey.

We changed to new survey software this year.

Overall, execution of the senior survey went incredibly well: initial response rate is over 75%.

Preparation and scheduling for the 2013 Senior Survey has begun and some schools have scheduled their survey.



## **Senior Survey Reports**

School-level results for each survey question were sent to school personnel by June 15<sup>th</sup>

District, school and initial regional results were presented in a short report format on two topics:\*

***Planning and preparation for college***

**(June 30<sup>th</sup>)**

***Student experiences in high school***

**(Aug 18<sup>th</sup>)**

\*Requested comments using survey software.





# Senior Survey Reporting Plans

Senior survey provides valid, relevant and actionable material—but to stay relevant, we need your input:

- On questions asked, length of the survey, and what information you would like to get out of the survey.\*
- On mini-reports, reports and presentations.

Current work, funded by the Chamber, includes creating an online aggregated dataset for customizable reports from previous years of survey data for schools and specific populations of students.

\*[gcumpton@raymarshallcenter.org](mailto:gcumpton@raymarshallcenter.org)



## Completed Work in 2012

Research Brief: *Meeting the Need for Locally-based Education Research* (Cumpton, 2012)

Outlines the regional importance of the SFP.

*Factors Associated with Education and Work after High School for the Classes of 2008 and 2009* (Cumpton et. al., 2012)

Among other item of note, shows that factors associated with postsecondary enrollment differ between Central Texas and Texas.

*Findings from the 2011 Senior Surveys* (Davis and Cumpton, 2012).

Presents 2011 regional survey findings.

Available: [www.centxstudentfutures.org](http://www.centxstudentfutures.org)



# Upcoming Presentations

## CREST meeting

Update on the Student Futures Project (today)

## Kansas City Chamber

Introduction to the Student Futures Project (today)

## Association for Public Policy Analysis and Management

Roundtable: Student Futures Project (Nov 5<sup>th</sup>)

Poster: Predicted effects of college enrollment activities on postsecondary enrollment (Nov. 3<sup>rd</sup>)

## Workforce Data Quality Initiative

How factors associated with initial postsecondary enrollment change as students persist through college (Oct. 29<sup>th</sup>)

# Factors Associated with Postsecondary Enrollment



	Within the Classroom	Outside of the Classroom
Long-term	<u>Academic sufficiency</u> -Meeting 8th grade math standard*	<u>Patterns of successful academic behavior</u>
	<u>Academic excellence</u> -Taking AP/IB courses* -Taking advanced math courses*	
Short-term	<u>College application within-subject aid</u> -Completing college essays in English	<u>College preparation activities</u> -Completing a FAFSA* -Taking a college test prep course*

\*Factors Associated with Education and Work After High School for the Classes of 2008 and 2009 (Cumpton et.al., 2012)

# Reasons to Examine Short-Term Strategies Outside the Classroom



## **Convenient:**

Does not demand additional classroom time and short-term means we could see results quickly.

## **Important:**

Literature in this field and common sense indicate they are important.

## **Focused:**

These activities are almost exclusively associated with the transition to college.

## **Manageable:**

There are so many things you CAN do, and this limits the number examined.

## **Collaborative Potential:**

Require pooling resources across the broader community.

# Short-Term Outside of the Classroom Variables Examined



## College Preparation Activities:

- Visiting one or more college campuses
- Taking the PSAT
- Taking ACC courses and/or dual credit
- Taking ACT/SAT preparation courses
- Participating in a college fair/college night
- Submitted a FAFSA

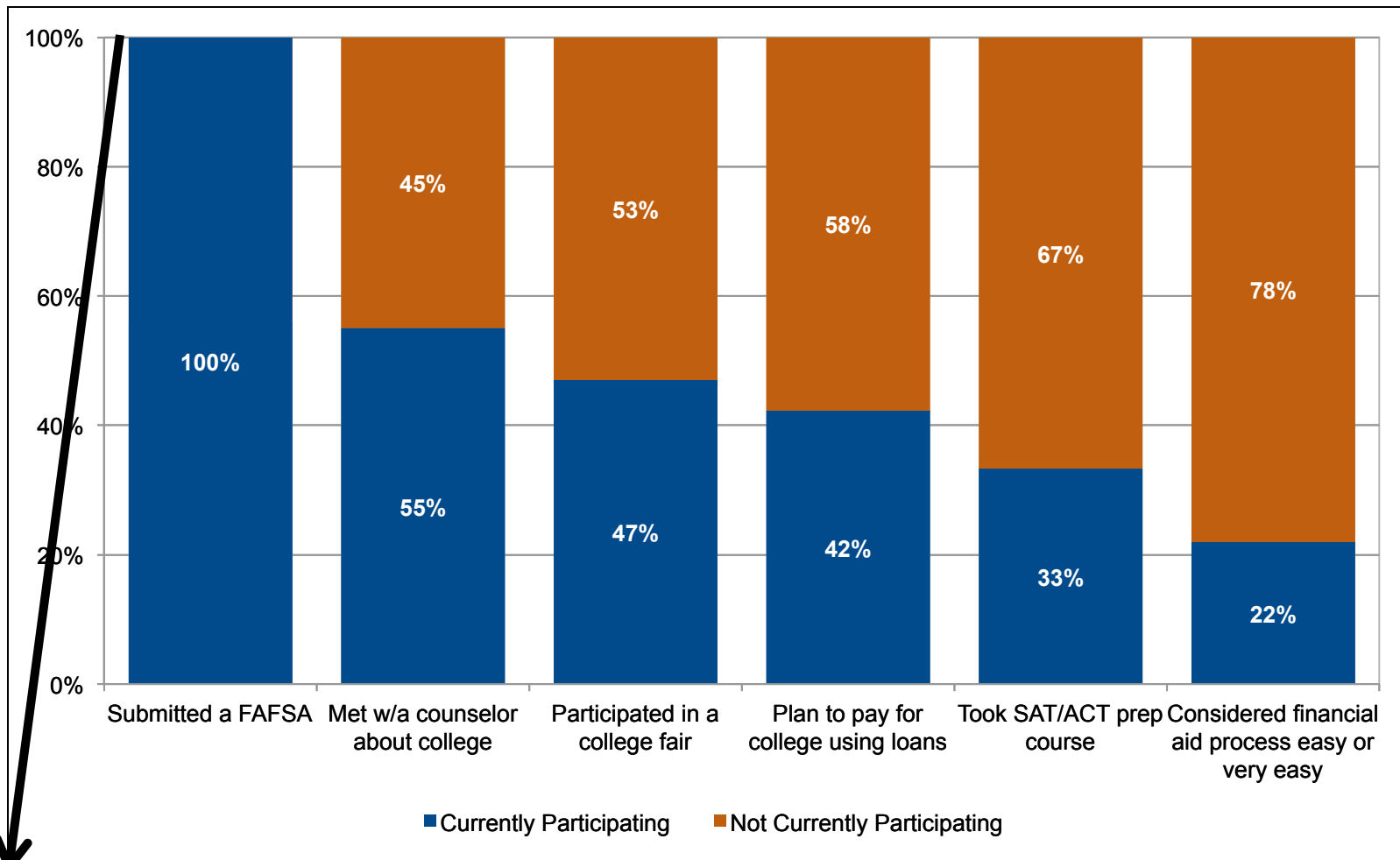
Knowledge of financial aid

High school counselor interactions related to college

Methods students planned to use to pay for college



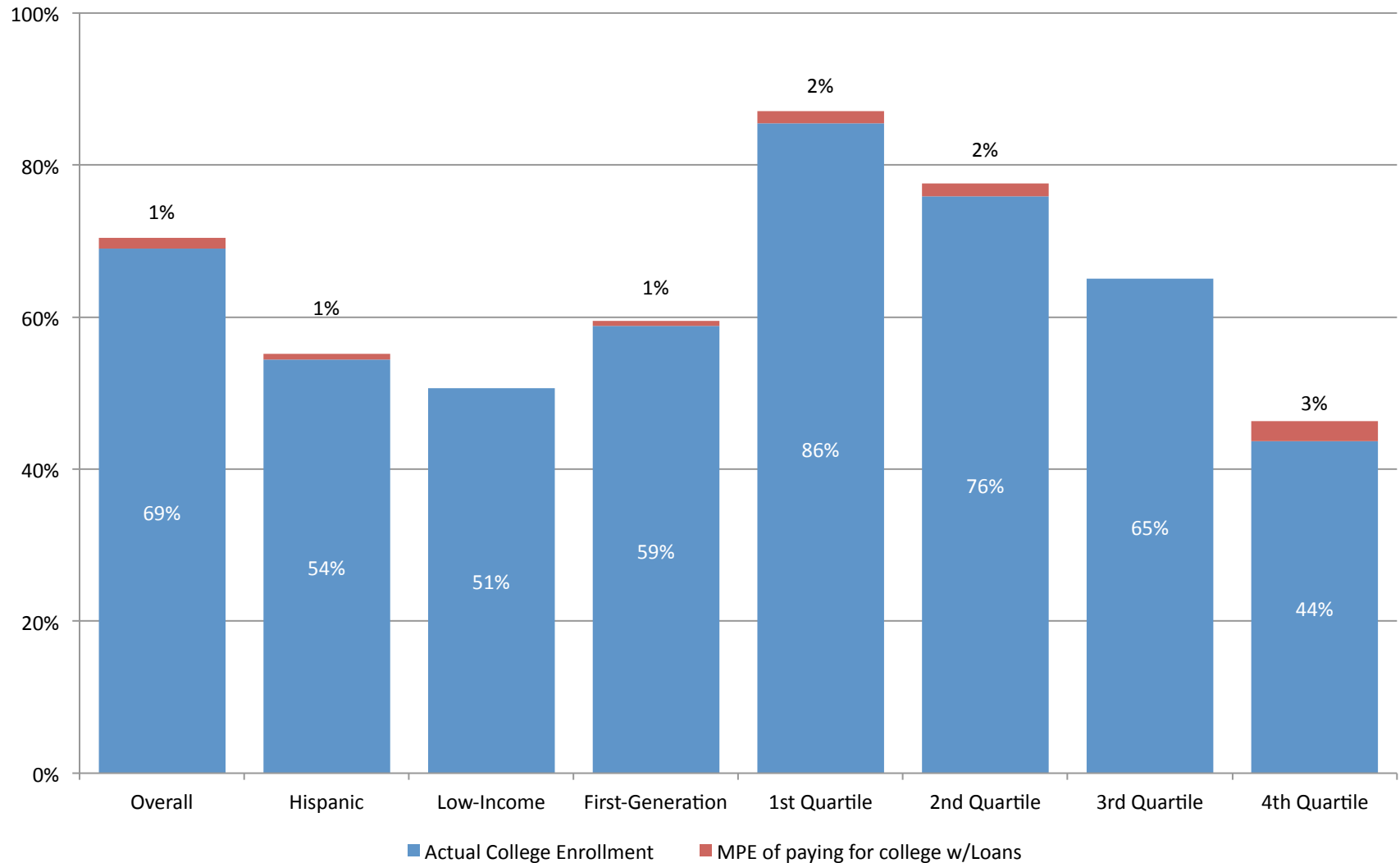
## Regional Participation Rates, Class of 2009 with Complete Data



Marginal Adjusted Predicted Effect: If you kept all other variables at there actual values, what change would you expect to see in postsecondary enrollment?



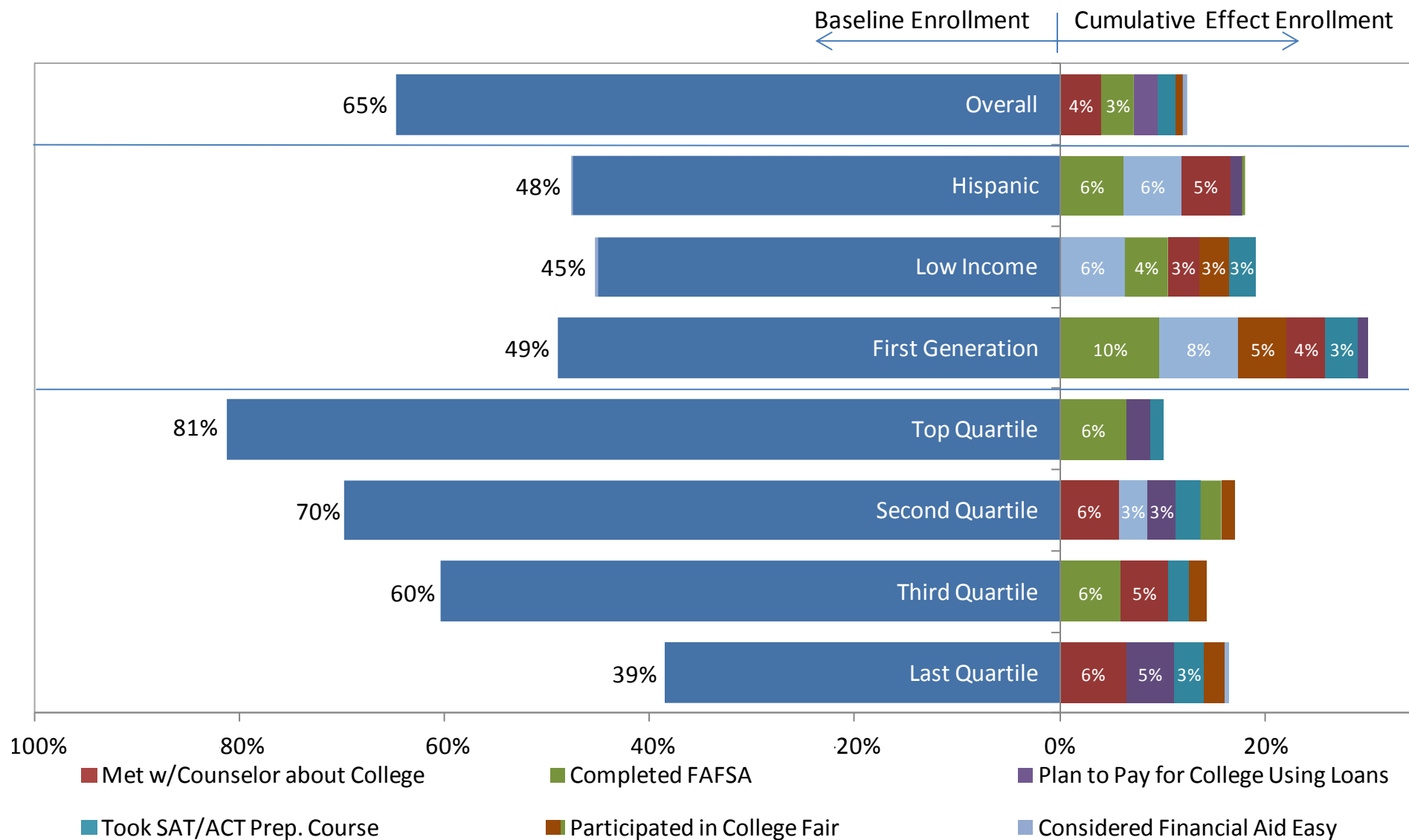
# Marginal Predicted Effect on Postsecondary Enrollment for Individual Variables







# Predicted Cumulative Effects on College Enrollment, Class of 2009

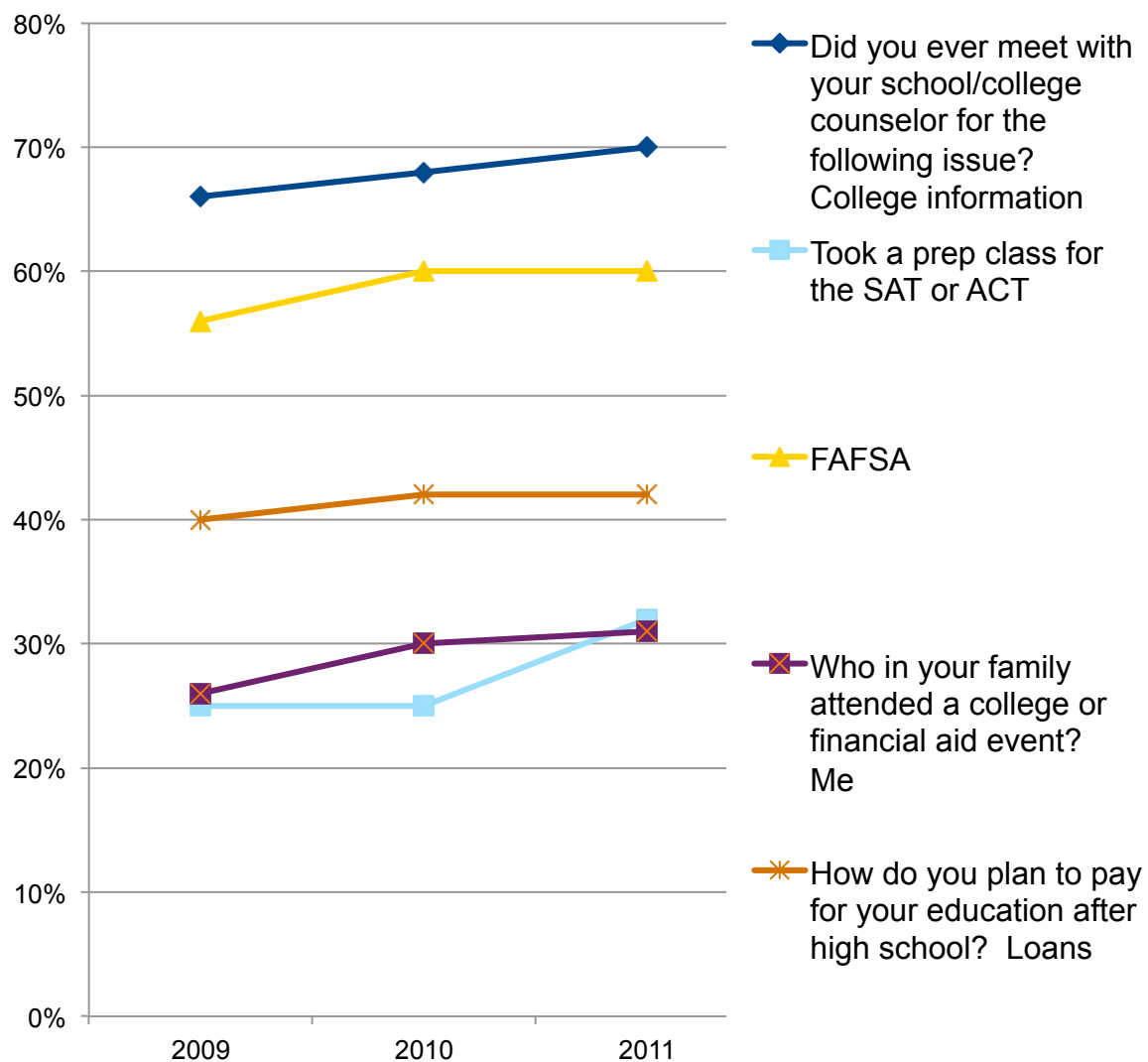




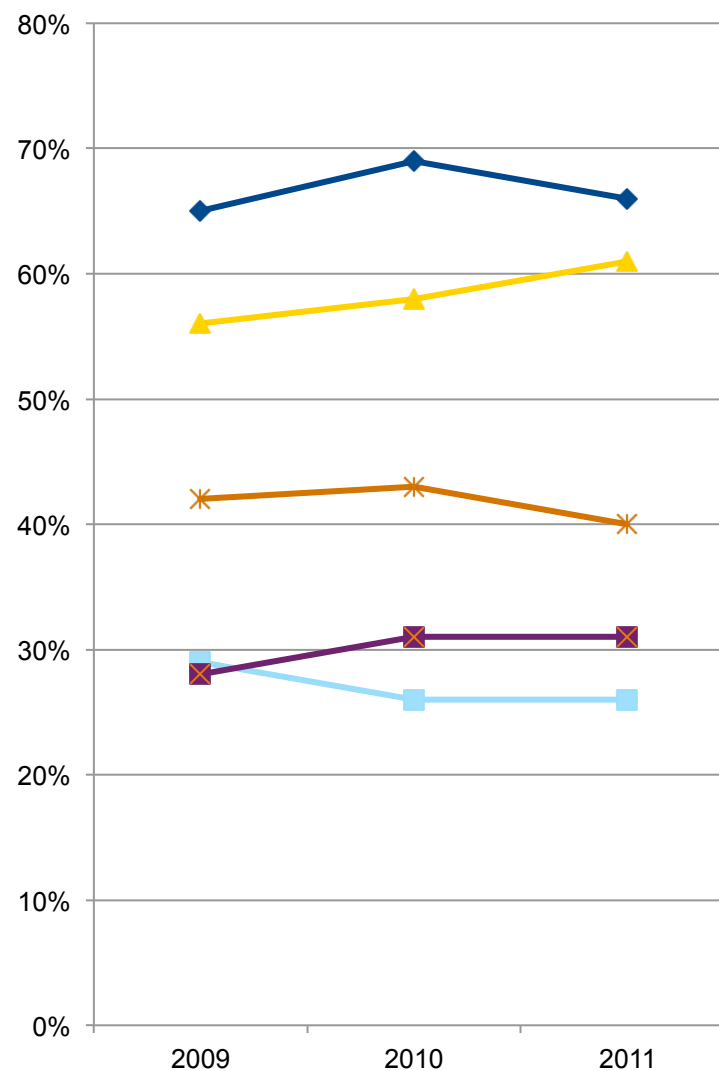
# Longitudinal Survey Responses



## Hispanic Graduates



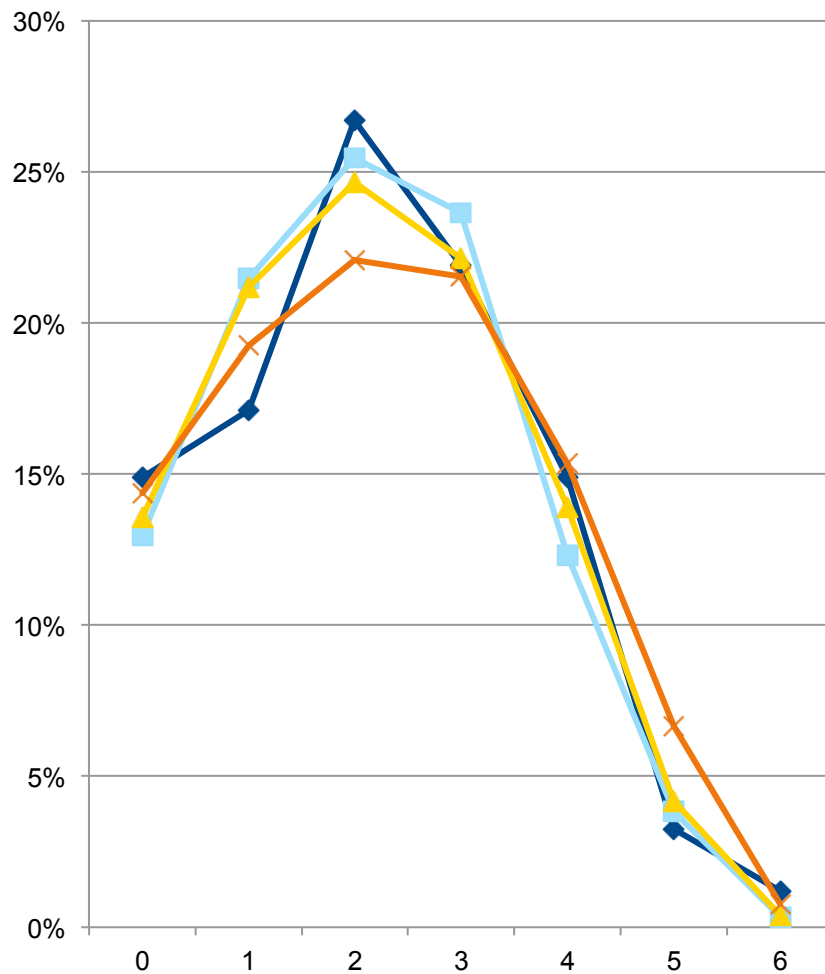
## First-Generation Graduates



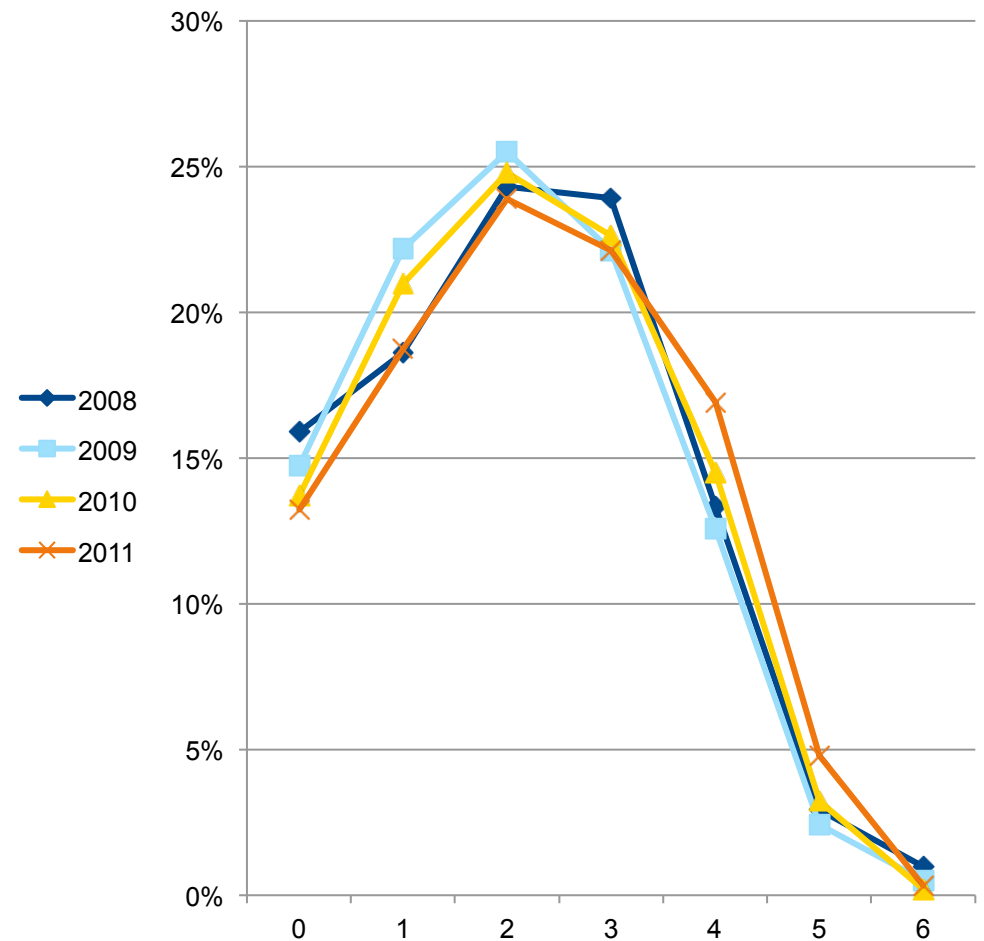
# Number of Activities Engaged In, by Cohort



## Hispanic Graduates



## First-Generation Graduates



# Implications for Policy



- Focusing on multiple activities in the region could produce increases in direct-to-college enrollment rates
- These efforts should be part of a combined package of services or activities rather than operating in isolation,
- But note the relatively large percentage of students who engaged in NONE of these activities.
- School districts should work to identify and keep accurate records of students who would be the first generation in their family to go to college.
- Working with districts to target specific populations of students might help.

# For More Information



Greg Cumpton

*Ray Marshall Center for the Study of Human Resources*

Lyndon B. Johnson School of Public Affairs

The University of Texas at Austin

gcumpton@raymarshallcenter.org

512.471.2377

[www.centexstudentfutures.org](http://www.centexstudentfutures.org)

[www.raymarshallcenter.org](http://www.raymarshallcenter.org)



RAY MARSHALL CENTER  
for the Study of Human Resources