

Spring Concert Repertoire Checklist

2024 Viola & Cello

The String Project's spring concert will be performed in play-down fashion, beginning with advanced pieces and concluding with Hoe Down. Students will enter the stage individually (not with their ensemble class) for the most advanced piece that they have memorized and polished. After performing this piece, they will remain on stage and perform—from memory—all following pieces.

Each student must return this form, complete with their private teacher's signature, indicating on which piece they will enter the stage. The pieces in **bold** will be played by Violas & Cellos.

Only check pieces in which all notes, bowings, dynamics, phrasing, and bow distribution are learned, polished and memorized.

Viola Only	Cello Only
<input type="checkbox"/> Telemann Concerto Mvt. 4	<input type="checkbox"/> The Swan
<input type="checkbox"/> Gavotte in G minor	<input type="checkbox"/> Scherzo
<input type="checkbox"/> Minuet No. 3	<input type="checkbox"/> Gavotte
<input type="checkbox"/> Andantino	<input type="checkbox"/> May Time
<input type="checkbox"/> Long Long Ago	<input type="checkbox"/> Perpetual Motion (Singles & Doubles)

Viola & Cello Together
<input type="checkbox"/> Ode to Joy
<input type="checkbox"/> Song of the Wind
<input type="checkbox"/> Twinkle Variation D
<input type="checkbox"/> Flower Song (2X)
<input type="checkbox"/> Hoe Down

Teacher Signature _____

Date _____

Student Signature _____

Date _____

Hoe Down

(Aka Bile Em' Cabbage Down)

Melody (On D string):

Double bass (4) D

F# (2) G (3) F# (2) E (1)

(0) G (4) D (1) D

F# (2) G (3) F# (2) E (1) D (0)

(4) D (0) G (4) D (1) D

Harmony (On A string):

A A A A

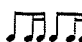
A A A A

Bass Line (Open strings) x3:

D D G G | D D A A |

D D G G | D A D D :||

Reminder:

- Bass line plays once as introduction
-  Down wiggle up wiggle

B



C



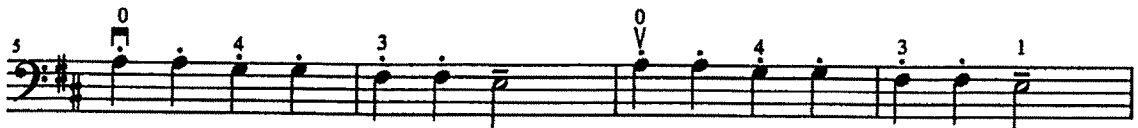
D



Theme



f marcato



4 Song of the Wind

Moderato

Folk Song

1 0 1 3 4 0 1 4 4 1 0

mf Keep the 1st finger down.

5 1 4 4 1 0 0 4 4 3 3 1

10 0 3 0 0 4 4 3 3 1 0

5 Go Tell Aunt Rhody

Moderato

Folk Song

1 3 1 0 1 3 1 0 0 4 3 1 0 1 3 0

mf

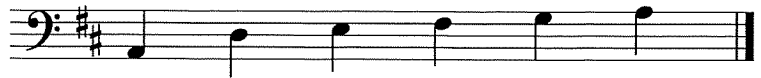
5 3 4 0 1 0 4 3 3 4 0 1 0

9 3 1 0 1 3 1 0 0 4 3 1 0 1 3 0

Ode to Joy

Ludwig von Beethoven
arr. Crock/Dick/Scott

Notes Used in This Melody



G1	D0	D1	D#3	D4	A0
A	D	E	F#	G	A

Melody for Cello

Musical score for the melody of 'Ode to Joy' for Cello. The score is in bass clef, key signature of two sharps (F# and C#), and 4/4 time signature. It consists of four staves of music, each starting with a measure number (1, 5, 9, 13). The first staff includes a dynamic marking of *mf*. The melody is primarily composed of quarter notes and eighth notes, with some slurs and accents. The final measure of each staff ends with a double bar line and repeat dots.

Bass Line

Musical score for the bass line of 'Ode to Joy'. The score is in bass clef, key signature of two sharps (F# and C#), and 4/4 time signature. It consists of four staves of music, each starting with a measure number (1, 5, 9, 13). The bass line is primarily composed of quarter notes and half notes, providing a steady accompaniment for the melody.

9 Perpetual Motion in D Major

Play this piece at the middle of the bow using a very short stroke.
Stop the bow after each note.
Play slowly at first and then gradually speed up the tempo.

S. Suzuki

Allegro

A

mf

Variation

After A, play B.

B

Procedure for practice:

etc.

Transpose all previous pieces to the key of G Major in preparation for "Long, Long Ago."

2 May Time

Con moto

W. A. Mozart

mf

dim. e rit.

Etudes for 2nd Position

Closed hand position is marked with o.
 Open hand position is marked with x.

Forward and backward extension using 2nd position.

Tonalization

2 Gavotte

J. B. Lully

Allegretto

mf con grazioso

40 2 1 0 $\overset{4}{V}$ $\overset{4}{V}$ 1 2 0 4 0 // $\overset{4}{\square}$ 4 0 2 1 2 0 2 1 2 7

45 1 4 2 0 4 0 1 // $\overset{1}{\square}$ $\overset{1}{V}$ 2 1 0 4 2 1 0 1 0 1 2 1 2 4

50 2 0 // 0 4 2 4 0 2 1 0 1 2 4 2 1 0 1 0 1 2 $\overset{2}{\square}$ *tr* 0 $\overset{0}{V}$ $\overset{0}{\square}$

rit. **f**

Backward Extension

4 2 1 4 2 x 1 4 2 1 4 2 x 1 4

4 2 1 2 4 2 x 1 2 x 2 4

Forward Extension

Open hand between 1st and 2nd fingers by moving thumb, 2nd, 3rd and 4th fingers one half-step away from the 1st finger. Keep the same shape in the moving fingers.

1 3 4 1 x 2 3 1 3 4 1 x 2 3 1

1 2 4 2 1 x 2 4 2 x 1



4 Scherzo

C. Webster

Presto $\frac{2}{4}$

p

4th pos.

fz 4th pos. (2 1) *fz* 4th pos. (2 1)

p

cresc. 4th pos.

f rit. e dim.

Meno mosso

33 *mf* (4 2) 2nd pos.

42 2nd pos. [4] 2nd pos. 4th pos. *poco rit.* *a tempo*

51 [4] 2nd pos. 4th pos.

Tempo I

60 *rit. e dim.* *p*

65 4th pos.

69 4th pos. (2 1) *fz*

73 4th pos. (2 1) *fz* *p*

77 *cresc.*

81 4th pos. *f*

Detailed description: This is a page of bass clef musical notation. It consists of nine staves of music. The first staff starts at measure 33 with a mezzo-forte (*mf*) dynamic and a tempo marking of 'Meno mosso'. It features various fingerings (1, 4, 0, 3, 1, 4, 0, 2) and a bracketed measure with '4 2' and '2nd pos.' below it. The second staff begins at measure 42, showing '2nd pos.', a bracketed measure with '[4]', another '2nd pos.', and a '4th pos.' section marked 'poco rit.' and 'a tempo'. The third staff starts at measure 51 with '[4]', '2nd pos.', and '4th pos.' markings. The fourth staff, marked 'Tempo I', begins at measure 60 with 'rit. e dim.' and '*p*' dynamics. The fifth staff starts at measure 65 with '4th pos.' marking. The sixth staff begins at measure 69 with '4th pos. (2 1)' and '*fz*' dynamic. The seventh staff starts at measure 73 with '4th pos. (2 1)', '*fz*', and '*p*' dynamics. The eighth staff begins at measure 77 with '*cresc.*' dynamic. The final staff starts at measure 81 with '4th pos.' and '*f*' dynamic. The key signature has one sharp (F#).

* Place only the 4th finger lightly on the A or D string to sound the harmonics.

The Swan

from the *Carnival of the Animals*

Camille Saint-Saëns
(1835-1921)

Andantino grazioso

4 1 4 1 1

p

4 1 3 4 1 4 1

II

8 1 1 1 1 3 4 1 1

mf

12 3 4 1 1 0 1

p

16 0 1 1 4 1 1

p

20 1 1 1 1 1

mf

24 4 2 2 3 4

I II

dim.

ritard.

lento

a tempo

pp