



Biomedical
Engineering
Society
University of Texas Chapter

GENERAL MEETING #1: BMES 101

September 2, 2025
Sign In Form:

Scan Me!





Biomedical
Engineering
Society
University of Texas Chapter

Knowledge

Networking

Four Pillars of Texas BMES

Leadership

Community



Biomedical
Engineering
Society
University of Texas Chapter

Officers and Faculty Advisor Introduction!



Edward Castillo, Ph.D.

Faculty Advisor | Associate Professor | Track 1

- Life at UT
 - Write Grants
 - Teach
 - Talk to Students
 - Drink Coffee
- Fun Fact
 - I have identical twin daughters
 - I played in a garage band all through grad school
 - This week, for the first time in my life, I have an office with a window
- Talk to me about
 - Science
 - Career Advice
 - Whatever is on your mind



edward.castillo@utexas.edu



Biomedical
Engineering
Society
University of Texas Chapter

Sneha Sinha

President | 3rd Year | Track 2

- Life at UT
 - Department: Religious Studies Major, FIG Mentor, Biochem TA , Dell Med Research
 - Orgs: Habitat for Humanity, SEEK
 - Hobbies: Reading, Traveling, Dance, Photography, EDM
- Post-UT Plans
 - Med School
 - We'll see
- Fun Fact
 - I've never studied at the PCL
- Talk to Me About
 - Cameras and pretty hikes
 - Baking! My friends and I are about to make the 100 hour cookies
 - Research :) I love listening or yapping about it
 - Red Rising Series, TSITP, we were liars (don't spoil the ending or we WILL NOT be friends)



president.texasbmes@gmail.com



Aarya Shah

VP of Internal Affairs | Year 2 | Track

- Life at UT
 - Department:
 - Orgs: UAB, BMES
 - Hobbies: crochet and baking
- Post-UT Plans
 - Not sure but thinking about grad school
- Fun Fact
 - I have been on the world largest swing
- Talk to Me About
 - Research
 - Design Comp
 - Recipes and baking.. I love trying to make new things
 - E-Week!!



vp.internal.texasbmes@gmail.com



Biomedical
Engineering
Society
University of Texas Chapter

Aethyr "Yam" Villela

VP of External Affairs | Year 4 | Track 1

➤ Life at UT

- Department: MDM Co-Director, RSP Manager, FIG Mentor, ME Res, Forensic Sci
- Orgs: EchO, Meow Mates, KMA
- Internships: CTAN, Biotech Startup SurfPlasma, Crown Castle
- Hobbies: Music!!!!, Video Games (Elder Scrolls, ULTRAKILL rn), Watching TV & Movies (RN: House, getting into Super Sentai), violin, TikTok Vertical Movies, YT

➤ Post-UT Plans

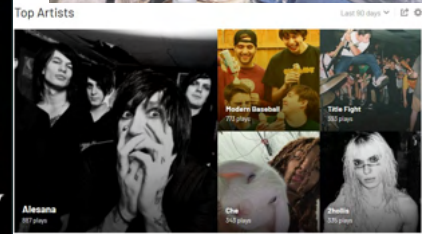
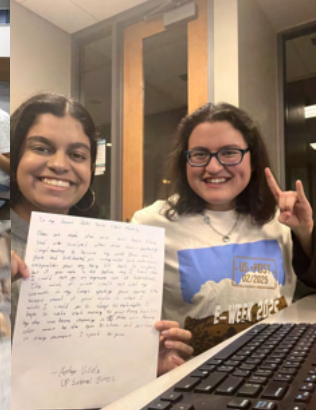
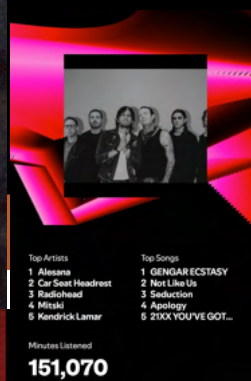
- Industry! Ideally medtech but we'll see where the winds take me

➤ Fun Fact

- I have 25k+ liked songs on Spotify + hit the 5k video max on YT playlists twice

➤ Talk to Me About

- Music!!! I listen to everything, ranging from metal to jazz to polyphony catholic
- Concerts! I'm seeing 2hollis, Bladee, Loathe -> Past Concerts: Slipknot, Deftones, Danny Brown, CHUU, AngelMaker, Mitski, JPEGMafia, more...
- MDM, Case Comp, Hacking Pain Hackathon
- E-WEEK I THINK EVERYONE SHOULD DO IT!!!
- just talk to me about whatever tbh i understand you twin



vp.external.texasbmes@gmail.com



TEXAS BMES 2025-2026



Joel Gonzalez

VP of Finance | Year 3 | Track 1/4

- Life at UT
 - Past Involvement: Design Comp, VPF
 - Orgs: SHPE, BOLT, Longhorn Wrestling
 - Hobbies: Running, Wrestling, Crocheting, Reading, Volleyball, COOKING!
- Post-UT Plans
 - PhD in Neural Engineering (Chicago or abroad)
- Fun Fact
 - I coached middle school wrestlers back home - El Paso - for two years.
- Talk to Me About
 - Business Minor
 - Research...
 - Music - Spanish Rock, Pop, R&B, etc...
 - Food - Tell me your favorite dish!! Mine is Fettuccine Alfredo with shrimp, crab, & veggies.



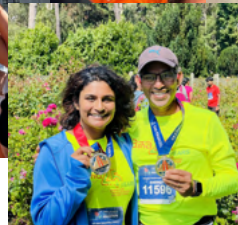
vp.finance.texasbmes@gmail.com



Esha Shenoy

VP of Relations | Year 2 | Track 3(?)

- Life at UT
 - Department: FIG Mentor, PANDA Lab
 - Orgs: just BMES 😊
 - Hobbies: music, yapping (d1 yapper fr), watching movies/tv shows, working out, learning how to crochet
- Post-UT Plans
 - Industry (medtech 🍷)... maybe grad school?
- Fun Fact
 - I've tend to forget the Alamo (never been)(i'm from Cali)
- Talk to Me About
 - Music (mainly indie and pop, but i try to listen to everything)
 - E-week!!! (my favorite week of the year)
 - Sports (i love love love watching sports)
 - Anything tbh!



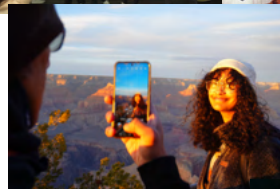
vp.relations.texasbmes@gmail.com



Nandini Senthilkumar

VP of Operations | Year 2 | Track 2 or 4

- Life at UT
 - Department: Soft Tissue Biomechanics Lab, MDM Social Media Head
 - Orgs: Longhorn Band, Longhorn Neurotech, E-NABLE
 - Hobbies: Music, Crocheting, Bouldering, Skating, Art, ZELDA
- Post-UT Plans
 - Grad school or industry!
- Fun Fact
 - I'm on Timothée Chalamet's Instagram!
- Talk to Me About
 - CONCERTS OR LHB I LOVVVEEE LHB
 - New recipes!! down to cook :)
 - MDM and Research!!
 - Photographyyyyy



vp.operations.texasbmes@gmail.com



Ojas Prabhugaonkar

VP of Membership | Year 2 | Track

- Life at UT
 - Department: FIG Mentor im unemployed
 - Orgs: BMES, AED, Longhorn Pickleball
 - Hobbies: Guitar, Drums, Tennis, Gym, Eating
- Post-UT Plans
 - Med-School 🙏
- Fun Fact
 - I have a cute dog named Soni
- Talk to Me About
 - Tennis, Football, Basketball, Fantasy
 - BMERush
 - Music (playing and listening)
 - Sports cars



vp.membership.texasbmes@gmail.com

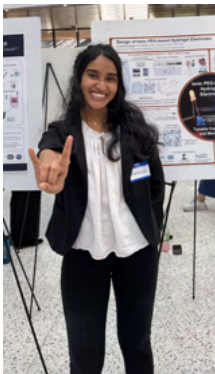


Biomedical
Engineering
Society
University of Texas Chapter

Bhanaviya Venkat

Pre-Med Coordinator | Year 4 | Track 2

- Life at UT
 - Department: ECH Lab
 - Orgs: Texas Tamil Academy, MXP
 - Hobbies: CONCERTS, reading, singing, watching the latest awful romcom (SITP S3 Episode 9!!)
- Post-UT Plans
 - Industry then med school!
- Fun Fact
 - I grew up in Singapore
- Talk to Me About
 - Gossip Girl, XO Kitty, Summer I Turned Pretty, Crazy Rich Asians
 - Austin food scene
 - Poker & Texas Hold 'Em



premedcoordinator.texasbmes@gmail.com

TEXAS BMES 2025-2026



Biomedical
Engineering
Society
University of Texas Chapter



Jose Ardila

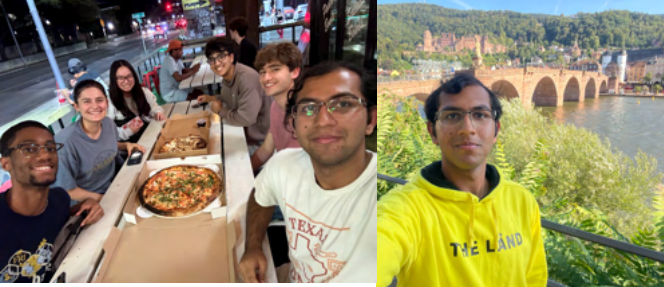
Pre-Med Coordinator | Year 4 | Track 2

- Life at UT
 - Department: EMT, Imaging Research w/ Dr. Bush, Dr. Dan LA, 2 Spanish certs
 - Orgs: Student Engineers Educating Kids, Longhorn EMS, Nepali Student Association, Tau Beta Pi
 - Hobbies: Showering, Eating, Music, Podcasts, Soccer, MMA, Reading
- Post-UT Plans
 - Medical school
- Fun Fact
 - I was born in Rio de Janeiro, Brazil
- Talk to Me About
 - SEEK!!
 - UFC (JDM beats Islam)
 - Book/Movie recs
 - Mus
 -



premedcoordinator.texasbmes@gmail.com

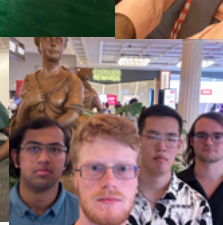
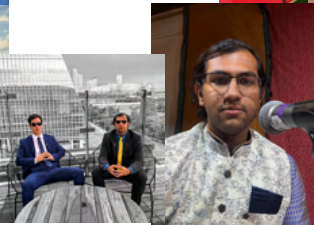
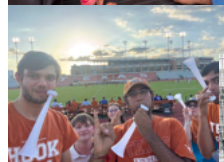
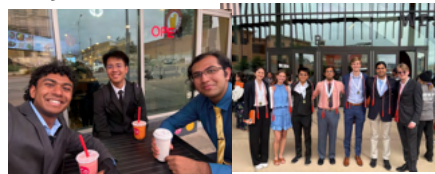
TEXAS BMES 2025-2026



Mrigayu Ghosh

Pre-Grad Coordinator | Year 4 | Track 2

- Life at UT
 - Department: Research in Dr. Baker's Lab, LA for Transport Phenomena, UGCA for Molecular Biology
 - Orgs: Tau Beta Pi, whatever else I get roped into
 - Hobbies: Music, Poetry, Math, Linguistics, Aviation, Food, Traveling
- Post-UT Plans
 - PhD, Postdoc, Professor
- Fun Fact
 - What do you want to know?
- Talk to Me About
 - Study abroad
 - Anything science related
 - Food
 - Any of my hobbies – I am a D1 certified yapper



email: mrigayu@utexas.edu



Charles Serrano

Finance Chair | Year 2 | Track 2

- Life at UT
 - Academics: Chemistry Major, CH 301 TA, Research in Baker Lab, Forensic Science Certificate
 - Orgs: Longhorn Band, SEEK, Brain Exercise Initiative
 - Hobbies: Singing, Cabo Bob's, TV Shows (Better Call Saul/Breaking Bad are so good)
- Post-UT Plans
 - Med School!
- Fun Fact
 - I'm exclusively allergic to cashews (no other nuts!!)
- Talk to Me About
 - Case Comp, Design Comp, Medical Device Make-a-Thon
 - AP Gov & APUSH credit laundering
 - Gambling 💙💙

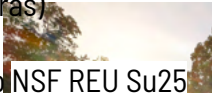


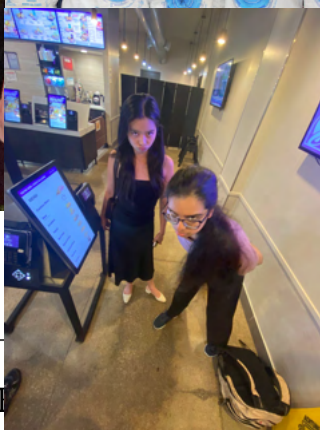
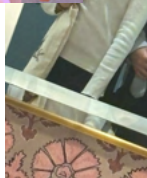
financechair.texasbmes@gmail.com



Amrita Arora

MDM Chair | Year 4 | Track 2

- Life at UT
 - Dept: BME/ME Nanoassembly Lab (Dr. Marras)
 - Orgs: this one!
 - Internships: PDE @ Biotex Su24, UChicago NSF REU Su25
 - Hobbies: copious amounts of fiction (written or TV/movies)
 - Post-UT Plans
 - MD and/or PhD applications
 - Fun Fact
 - Never broken a bone!
 - Talk to Me About
 - National Medical Device Make-a-thon at UT Austin!!!!
 - Other competitions and grants!
- 



mdmchair.texasbmes@gmail.com

natmdm2026@gmail.com

Insta: @nationalmdm2026

Hornraiser starts tomorrow! Keep an eye out.

T

26



Biomedical
Engineering
Society
University of Texas Chapter

Overview of Opportunities!



Mentoring Activities

Track Night (GM #2!)

- Learn about the 4 different tracks in BME
- Panels are formed by upperclassmen and alumni of each track
- Fall semester(in 2 weeks)

Career Night

- Learn about the different careers that you can explore once you graduate
- Panels are formed by alumni, graduate students, and industry representatives
- Spring semester

Misc. Activities

- Alumni Mentoring & Buddy System
- Faculty panel and professor chats
- Study sessions and homework help for your classes prior to major exams
- Officer coffee chats (reach out to us!)



Professional Development Activities

Company & Grad Info Sessions

- Hear from our corporate partners about their company and internships
- Hear from our graduate school partners about opportunities
- Network with industry and grad school representatives

Pre-Med Workshops

- For our subgroup of pre-med students
- Workshops on MCAT prep, med school apps, etc.
- Volunteering/shadowing opportunities
- Pre-med panel with upperclassmen and med school students
- Potential 1 on 1 Mentorship

Journal Club

- Explore current research on health disparities through guided discussions of journal articles
- Develop skills in critically reading, interpreting, and discussing scientific papers
- Learn from Dr. Panda's expertise as well as insights from guest speakers with diverse research backgrounds



Biomedical
Engineering
Society
University of Texas Chapter

Journal Club



Interest Form



Flyer



BME Health Disparity Journal Club

Fall 2025 Semester | Hosted by Dr. Panda at UT Austin

Join us this fall to explore the complex intersection of biomedical engineering, global and local health disparities. Focus on how lack of diagnostic impacts vulnerable populations in TX & internationally

Journal Club Schedule: 5-6 PM BME 3.206



September 10:

Overview of Diagnostic for All
Introduce the global gap in diagnostics using the WHO's AS-SURED criteria, drawing parallels to rural Texas communities with limited lab testing.



October 29:

STIs & Reproductive
Discuss innovations like self-collection and point-of-care tests for STIs, addressing testing gaps in low-income countries and uninsured Texas populations where infections are on the rise.



September 24:

Tuberculosis (TB)
Explore how limited access to molecular testing for TB delays diagnosis globally and locally, noting its high burden in low-income countries and Texas.



November 11:

Cancer
Focus on scalable screening tools and diagnostics for cervical and liver cancer to reduce late-stage diagnoses, particularly in low-resource populations globally and Latinx and Asian communities in Texas.



October 15:

Diarrheal Diseases
Discuss how better diagnostics for diarrheal diseases can guide treatment and reduce antibiotic use, focusing on the disproportionate impact on children and communities in low-income countries and South Texas.



REGISTER
via Google form

« HERE »



Brought to you by
UT Austin Internal Affairs for BMES



Societal Impact Activities

Case Competition

- Concept development and planning/project development skills
- Challenge teams to identify feasibility, implementation, and cost as well as the political, legal, and social consequences of solution
- Present solution to industry reps, faculty members, doctors, etc.

Design Competition

- Concept and product development skills
- Challenge teams to identify an issue in BME field and build a prototype
- Present solution to industry reps, faculty members, doctors, etc.

MedSim Program

- View medical simulations
- Talk to residents and doctors
- Brainstorm solutions to problems with current medical devices
- Topics: Trauma, Acute Respiratory Failure, Hypothermia, more!!!
- Guys this is **NOT** just for pre-meds - aethyr (very industry)



Leadership Opportunities

Freshman Liaison

- Become an officer!
- Manage the subgroup of first-year students
- Plan social events & encourage freshmen involvement
- Provide perspective to current officer team

Case/Design Comp Committees

- Two separate committees to plan and run Case/Design Comp
- Committee Chair or subcommittee member
 - Prompt writing
 - Teams creation
 - Judges liaison

Service Chair

- Become an officer!
- Organize all of the volunteer initiatives under BMES
- Hands-on experience in event logistics, advertisement
- Assisted by VPE



Community/Outreach

Families

- Find a smaller community within BME
- Seek advice from career-oriented family heads
- Compete against other families to win a prize

Socials

- Types of socials: BMES-internal, joint socials with other engineering orgs, BME-specific orgs, or other BMES student chapters
- De-stress and spend some time getting to know each other

Misc. Events

- Volunteer together at local events
- Compete together during E-Week and/or on an IM team



Biomedical
Engineering
Society
University of Texas Chapter

Corporate Partners!



- BRC specializes in regulatory and quality systems consulting for biomedical and pharmaceutical companies
- Learn about careers in consulting and supporting medical device and drug development
- Ideal for students interested in bridging engineering, innovation, and regulatory science
- Come talk to a BRC for **GM #5 on October 28th**



Biomedical
Engineering
Society
University of Texas Chapter



Biosense Webster®
PART OF THE *Johnson & Johnson* FAMILY OF COMPANIES

- Interested in working in the MedTech industry? Biosense Webster, a Johnson & Johnson company, is a leader in cardiac electrophysiology innovation
- Perfect for students passionate about medical devices and cutting-edge healthcare technology
- Come talk to a Biosense Webster recruiter for **GM #4 on October 14th**



- Test Prep for Grad, Law School, and Medical School
- Discounts on Counseling & Study Products
- 4 MCAT full scholarships available!
- Suture clinic

ENMED



HOUSTON
Methodist
LEADING MEDICINE

- Learn why EnMed may be the right medical school for you



MEDSCHOOLCOACH
helping you achieve your medical school dreams

- Webinars on Med School Admissions & MCAT Prep
- 6-Month Access to MCAT Prep Tools for Members
- Discount on MedSchoolCoach Services



Biomedical
Engineering
Society
University of Texas Chapter

Princeton Review Upcoming Events

The Princeton Review®

PRE-MED FEST

MCAT® Week 2025

6-9 OCTOBER

WEBINARS FREE

Scan to RSVP Today.
Have a conflict? Register to view recordings!

MONDAY, OCT. 6
Getting Ahead: CARS Skills that Stick (6 PM ET)
Create Your MCAT® Study Plan (8 PM ET)

TUESDAY, OCT. 7
MCAT® Review: GChem + Ochem (7 PM ET)

WEDNESDAY, OCT. 8
Getting Into Med School (6 PM ET)
MCAT® CARS + Psych/Soc (8 PM ET)

THURSDAY, OCT. 9
MCAT® Review: Bio/Biochem (7 PM ET)

KNOWLEDGE ON TAP

SERVING SCIENCE, STRATEGY, AND CONFIDENCE BOOSTING TIPS

Questions? Contact Coleen at coleen.read@review.com

The Princeton Review®
Courses | Private Tutoring | Self-Paced | Admissions Counselors

Pursuing Your MD with Ross Med

Thursday, September 4th
7pm ET | 6pm CT
| 4pm MT

Location: The Princeton Review Online Classroom
You're ready to take the next step toward your MD, and we're here to help you get there.

Join us for a live webinar and get a real look at what it's like to study medicine at Ross University School of Medicine (Ross Med.) If you're driven, ready to get early hands-on experience, and focused on practicing in the U.S., this is your chance to explore how Ross Med can help you get there. Hear from Ross Med Admissions and see if it's the right fit for your journey to becoming an MD.

RSVP
coleen.read@review.com
bit.ly/rosstpr925

Check out our MCAT® prep options!
bit.ly/TPRMCATPrep

Ask about exclusive partnership discounts!

coleen.read@review.com
800-273-8439

GMAT® is a registered trademark of the Educational Testing Service (ETS). GRE® is a registered trademark and owned by the Graduate Management Admission Council (GMAC), and LSAT® is a registered trademark of Law School Admission Council, Inc. None of the trademarks are affiliated with The Princeton Review and do not endorse these products. The Princeton Review is not affiliated with Princeton University.



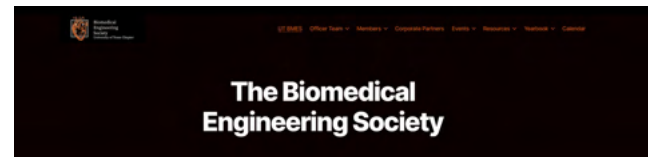
Biomedical
Engineering
Society
University of Texas Chapter

Logistics!



Meetings & Events

- General Meetings
 - Every other Tuesday (starting today), 6 - 7 PM
 - Next meeting is Tuesday, September 16
 - BME Seminar Room or Zoom
 - If unable to attend, meeting slides become available on our website after the meeting
 - Home > Members > Meeting Slides
- Other Events
 - Usually occurs during off weeks (weeks we don't have meetings)
 - For presentation-style meetings and workshops, usually 6 - 7 PM in the BME Seminar Room or Zoom
 - For socials, tend to occur elsewhere; time is a wildcard



What is BMES?

The Biomedical Engineering Society, or BMES, is both a professional and social organization for students interested in biomedical engineering. The organization strives to promote camaraderie and coherence among members of the biomedical engineering community, increase awareness of the growing field of BME, and open doors of opportunity to our members.

Membership is open to all students, faculty, and staff of the University of Texas at Austin regardless of their area of study.



[Website!](#)



Communication

Slack Workspace

Join and get to know your fellow BMEs by joining tailored (one for every year) and fun (#bmembers, #bmemes) channels!



Instagram

Stay up to date on the latest events and look through images from past events!



Google Calendar

Have easy access to event times, locations, & dates on-the-go!





Biomedical
Engineering
Society
University of Texas Chapter

Live Now!



Become a Member

- Dues: \$30
- Membership Drive
 - After this meeting!
 - DM on Instagram if you would like!
 - Location: BME Lobby/Officers in the Wild
 - Venmo: @texas-bmes-2025
 - Zelle: vp.finance.texasbmes@gmail.com
- Why Become a Member?
 - Access to our events (and free food), opportunities, alumni contacts, research initiative list, and corporate benefits
 - Develop a community and make new friends
 - BMES swag: member stickers and t-shirts





Biomedical
Engineering
Society
University of Texas Chapter

BMERUSH

If you attend at least five events, turn your stamp sheet in for a ticket to boba tab!!

September 3 @6pm: Stop the Bleed w/ Premed Coordinators

September 4 @3pm: Headshots +Resume Review

September 5 @ 6pm: Game Night w/ Dr. Dan

September 7 @ 8:30 am: Field Day w/ TEWH

September 8 @ 6pm: Interview Prep

September 9 @ 7pm: Freshmen Speed Dating

September 10 @ 7pm: Family Speed Dating

September 11 @ 3pm: **Boba Tab**

September 12 @5pm: Picnic with BMES, BOLT, and TEWH





Freshman Liaison Application

- Now's your chance to stand up here with us!
- Responsibilities include: communicating with freshman class, providing input to officer team, planning freshman-tailored events, and bringing your perspective and efforts to the team
- Applications are due **Friday, September 12th by 11:59 PM**



<https://forms.gle/8iLbbF2DvzTq8aY79>



Biomedical
Engineering
Society
University of Texas Chapter

ON IT!



Case Competition Committee

- Annual Texas BMES Case Competition coming up in November
- We need students to plan and design the event!
- 6 open positions!!!
- Sub-committees include:
 - Prompts - Nicole Randazzo
 - Teams - Andrew John
 - Judge - Ananya Arora
- Chair will be responsible leading meetings, maintaining communication, and often delivering committee decisions
- Great professional development opportunity within BME scope
- Applications are due **Friday, September 12th by 11:59 PM**



Aethyr: (972) 374-7630

Thao: (469) 543-9221





Service Chair



- In charge of researching, maintaining, and inquiring about various volunteering opportunities
- Assists in publicity and logistics of service events, along with assistance from VPE once a service event is decided
- Required to host a service event at minimum monthly
- Maintain food pantry volunteering @ Micah 6
- Year long position!



**Service Chair
Application**





Pre-Med Group

Handbook Form

Submit your questions for the premed handbook on the premed slack channel

Pre Med Group Chat

Receive messages for MedSim, food pantry, and other volunteering opportunities! Group Chat will be on Slack



Biomedical
Engineering
Society
University of Texas Chapter

Buy Old T-Shirts!





Biomedical
Engineering
Society
University of Texas Chapter

Messages from Other BME Orgs!



Follow us on
Instagram!

Join the GroupMe!

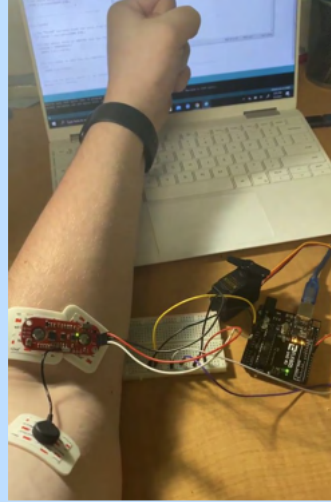


JOIN BOLT

*Biomedical Outreach and
Leadership Team*

First Meeting: Sep 11, 6-7 PM
(Seminar Room)

eNABLE Prosthetics



- Chapter of the international non-profit e-NABLE, dedicated to creating and designing open-source prosthetics. Research-based project organization and strive for altruism and sustainability!

**1st GM on Sept. 4th, 6-7 PM @
ECJ 1.306**

Fill out our Interest form + Follow
our Instagram—@enable_ut





Upcoming Events/Deadlines

- **Stop the Bleed w/ Premed Coordinators** - September 3, 6PM - 7PM | BME Seminar Room
- **TEWH GM #1** - September 4, 7 - 8:15 PM | Burdine Hall 136
- **BOLT GM #1** - September 11, 6 - 7 PM | BME Seminar Room
- **Picnic with BOLT and TEWH** - September 12, 5 - 7 PM | Main Lawn
- **Freshman Liaison Application** - due September 12, 11:59 PM
- **Case Competition Committee Application** - due September 12, 11:59 PM
- **Service Chair Application** - due September 12, 11:59 pm
- **BMES GM #2: Track Night** - September 16, 6- 7 PM | BME Seminar Room



Scan to join the Google Calendar



Biomedical
Engineering
Society
University of Texas Chapter

THANK YOU FOR COMING!



Don't forget to sign in!